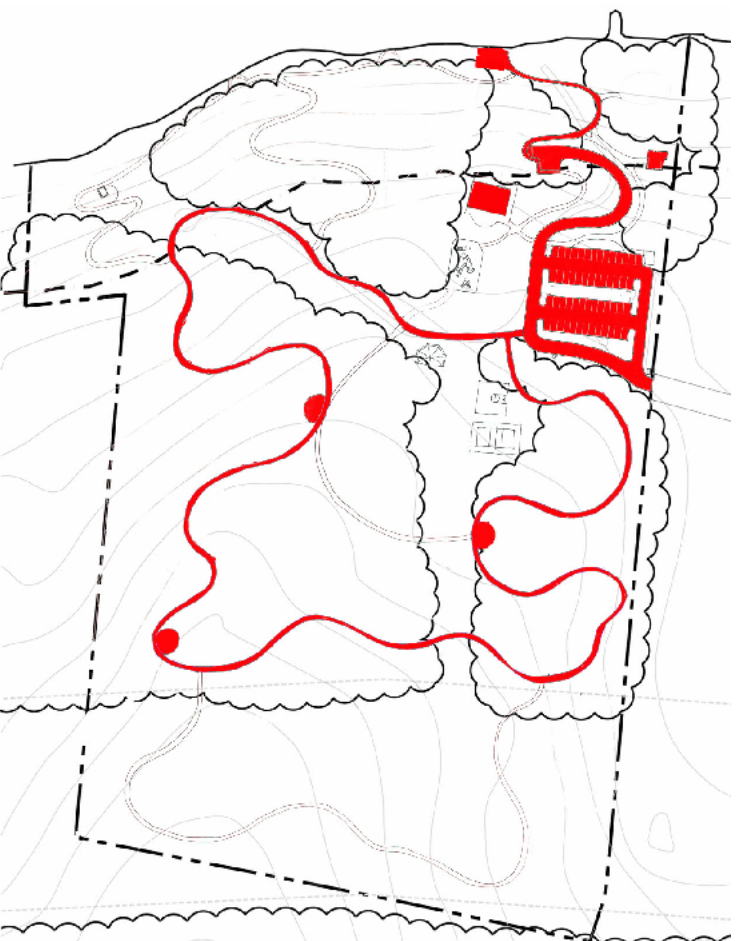


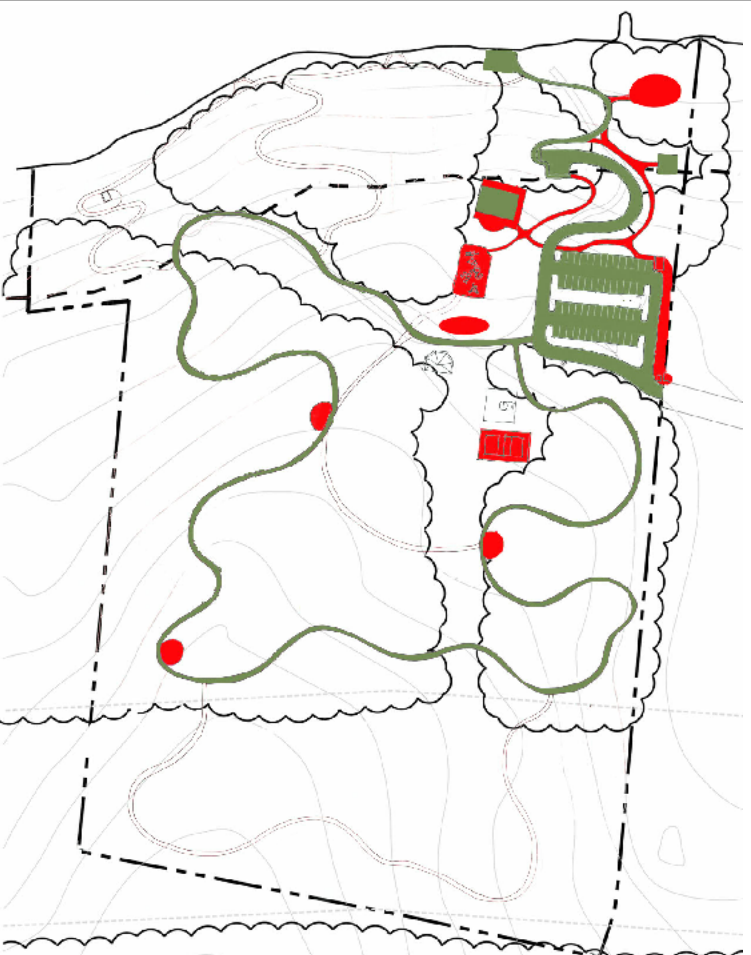
SHORT-TERM IMPROVEMENTS (0-1 Year)



SHORT-TERM IMPROVEMENTS (0-1 Year)

1. Demolish Marion's House
2. Demolish shed next to Marion's House
3. Demolish boathouse
4. Demolish Infirmary building
5. Demolish cabins and out-buildings
6. Remove invasive vegetation
7. Prune trees as needed
8. Repair Goddard Lodge for seasonal use
9. Repair Winter House
10. Establish Water and Cable Infrastructure
11. Construct upper parking lot
12. Remove existing access road and stabilize
13. Construct beach access road and lower parking area
14. Establish path to the beach from the lower parking area
15. Locate temporary restroom facility
16. Place new storage building at the beach
17. Establish initial walking/nature trail
18. Create rest areas
19. Maintain access to easement area
20. Place new entrance sign at Singletary Avenue and Tuttle Road
21. Place safety signs
22. Place trail head sign
23. Create vehicular barriers where needed

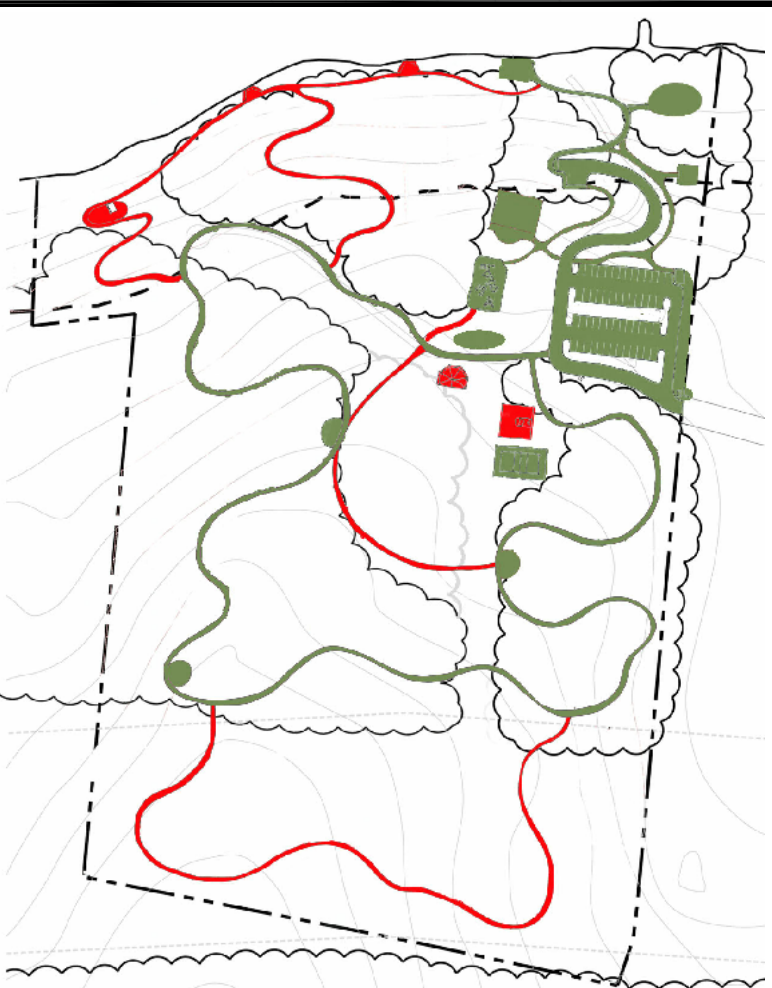
MID-TERM IMPROVEMENTS (2-5 Years)



MID-TERM IMPROVEMENTS (2-5 Years)



1. Continue Goddard Lodge improvements (exterior terrace and deck)
2. Build playground with play structure
3. Place new storage building near upper parking lot
4. Establish landscape buffer between parking lot and neighbors
5. Construct paths from upper parking lot to Winter House and beach
6. Establish Picnic area near beach
7. Re-establish volleyball court
8. Establish horseshoe pits
9. Expand three rest areas into fitness/educational stations
10. Place new entrance sign at Camp entrance with associated directional and safety information

LONG-TERM IMPROVEMENTS (6-12 Years)



LONG-TERM IMPROVEMENTS (6-12 Years)

1. Construct seasonal guard station at Camp entrance
2. Construct permanent restroom facility
3. Build half court basketball
4. Winterize Goddard Lodge
5. Create open multi-use field with surrounding path
6. Construct or place Picnic Pavilion/Stage
7. Establish trail along lake edge with rest/picnic/fishing areas
8. Extend trails into easement (requires approval from utility company)
9. Place trail head signs

LEGEND	
	NEW IMPROVEMENTS IN EACH PHASE
	IMPROVEMENTS FROM PREVIOUS PHASES

PHASING PLAN

Marion's Camp

