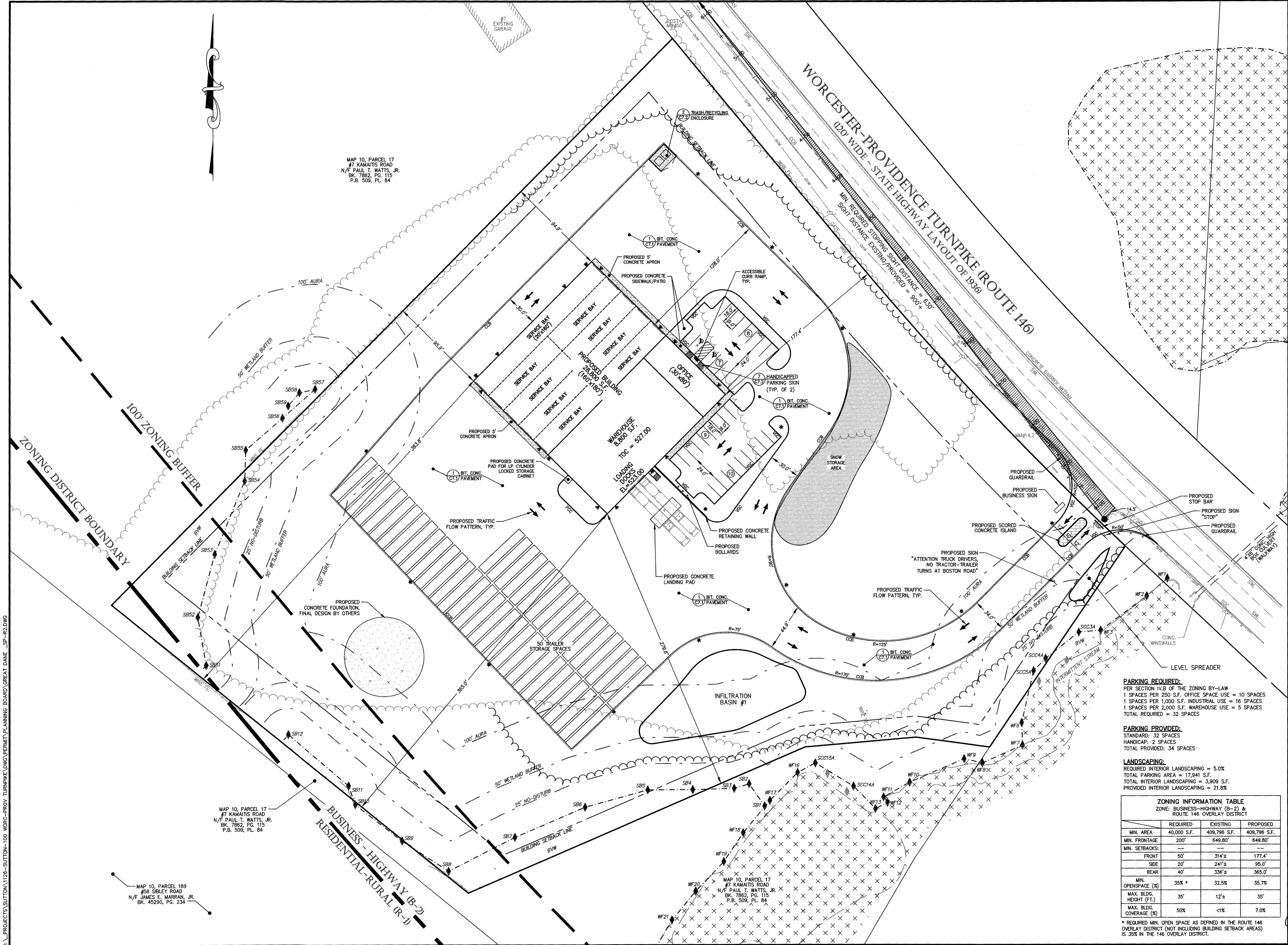


H:_PROJECTS\SUTTON\1126-SUTTON-100 WORC--PROV TURNPIKE\DWG\PERMIT\PLANNING BOARD\GREAT DANE _SP-R2.DWG

C-0.0


I:_PROJECTS\SUTTON\1126-SUTTON-100 WORC-PROV TURNPIKE\DWG\PERMIT\PLANNING BOARD\GREAT DANE _SP-R2.DWG



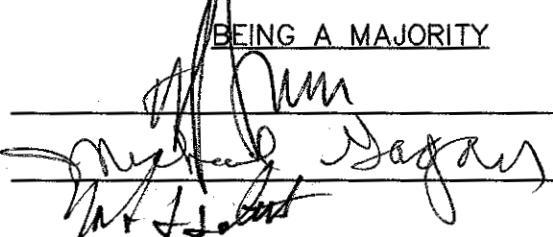
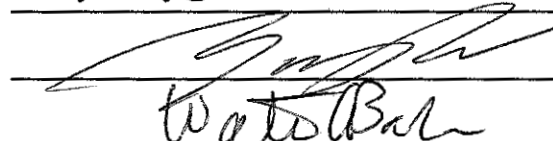
MAP 10, PARCEL 17
#7 KAMATIS ROAD
N/F PAUL T. WATTS, JR.
BK. 7862, PG. 115
P.B. 508, PL. 84

MAP 10, PARCEL 169
#58 SIBLEY ROAD
N/F JAMES E. MARRAN, JR.
BK. 45250, PG. 234

MAP 10, PARCEL 17
#7 KAMATIS ROAD
N/F PAUL T. WATTS, JR.
BK. 7862, PG. 115
P.B. 508, PL. 84



TURNING POINT ENGINEERING
CIVIL SITE DESIGN
P.O. Box 757 • Sutton, MA 01590
P:(508) 381-1515 F:(508) 647-0189
www.tpecivil.com

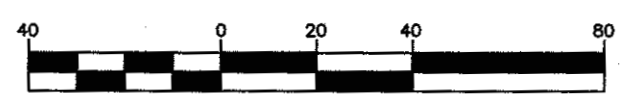
APPROVAL UNDER SITE PLAN REVIEW.
SUTTON PLANNING BOARD
BEING A MAJORITY


APPROVAL DATE: _____
ENDORSEMENT DATE: 3/25/24

PROJECT NAME
NORTHEAST GREAT DANE
#100 WORCESTER-PROVIDENCE TURNPIKE
SUTTON, MASSACHUSETTS
SUTTON MOTOR-IN TRUST
ONE MERCANTILE STREET, SUITE 540
WORCESTER, MA 01608

PREPARED FOR
Eastland Partners, Inc.
987 Millbury Street
Worcester, MA 01607

REVISIONS			PROJECT INFORMATION		
REV.	DATE	DESCRIPTION	PROJECT NO.	DESIGNED BY	CHECKED BY
1	1/29/24	REVISED SITE PLAN	TFE-1126	TRB, SJO	JAB, BW
2	2/29/24	PER REVIEW COMMENTS			
			DATE	DECEMBER 14, 2023	
			CAD FILE	H:\GREAT DANE_SP.dwg	
			PLAN NO.	L-412	

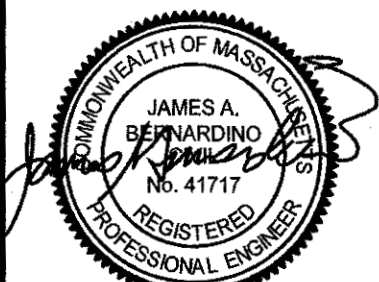
GRAPHIC SCALE



(IN FEET)
1 inch = 40 feet

SHEET TITLE

LAYOUT & MATERIALS PLAN



SHEET NO.
C-3.1

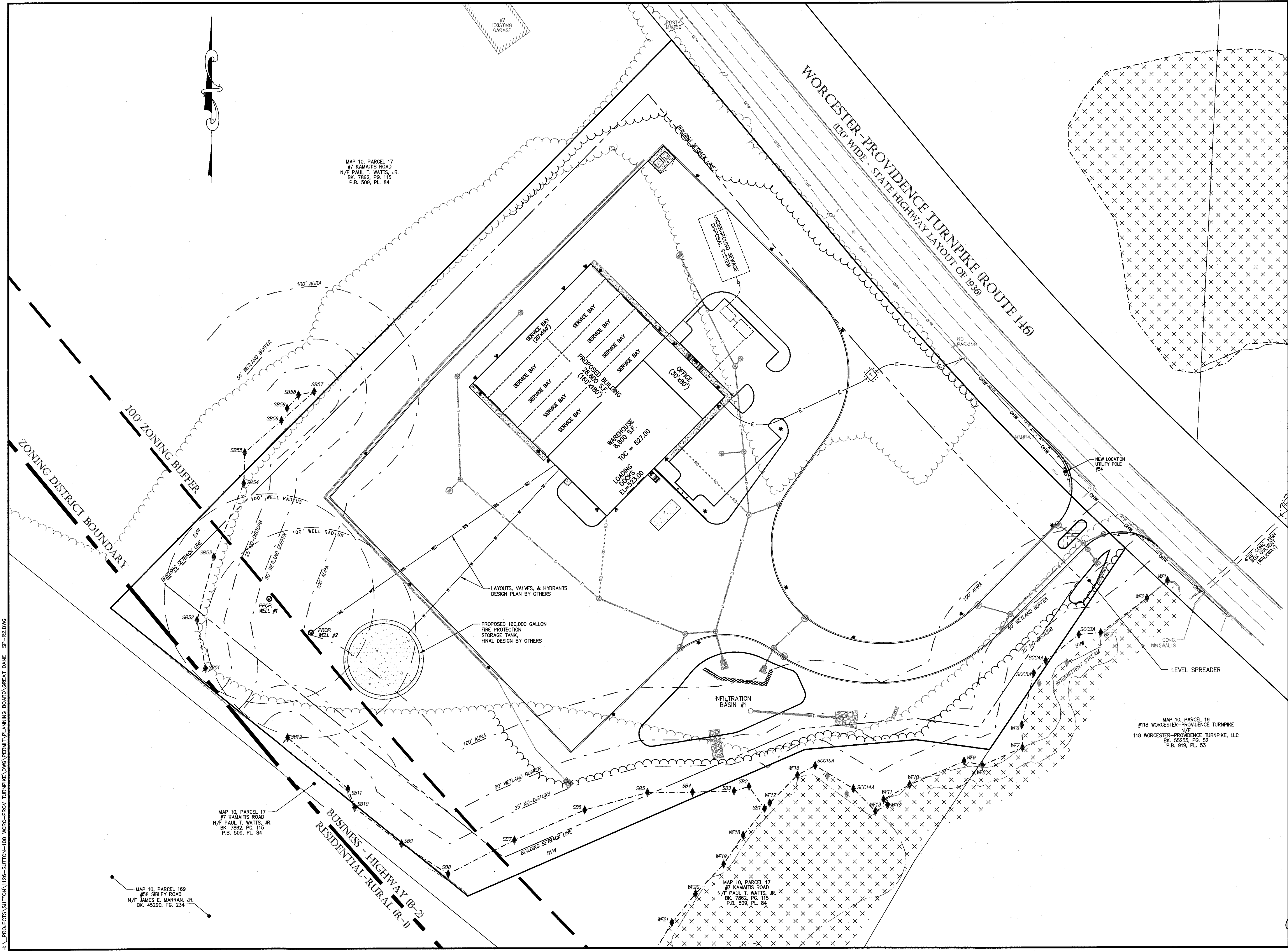
PARKING REQUIRED:
PER SECTION IV.B OF THE ZONING BY-LAW
1 SPACES PER 250 S.F. OFFICE SPACE USE = 10 SPACES
1 SPACES PER 1,000 S.F. INDUSTRIAL USE = 16 SPACES
1 SPACES PER 2,000 S.F. WAREHOUSE USE = 5 SPACES
TOTAL REQUIRED = 32 SPACES


PARKING PROVIDED:
STANDARD: 32 SPACES
HANDICAP: 2 SPACES
TOTAL PROVIDED: 34 SPACES

LANDSCAPING:
REQUIRED INTERIOR LANDSCAPING = 5.0%
TOTAL PARKING AREA = 17,941 S.F.
TOTAL INTERIOR LANDSCAPING = 3,909 S.F.
PROVIDED INTERIOR LANDSCAPING = 21.8%

ZONING INFORMATION TABLE			
ZONE: BUSINESS-HIGHWAY (B-2) & ROUTE 146 OVERLAY DISTRICT			
	REQUIRED	EXISTING	PROPOSED
MIN. AREA	40,000 S.F.	408,796 S.F.	408,796 S.F.
MIN. FRONTAGE	200'	649.80'	649.80'
MIN. SETBACKS:			
FRONT	50'	314'±	177.4'
SIDE	20'	241'±	95.0'
REAR	40'	336'±	365.0'
MIN. OPENSACE (%)	35% *	32.5%	35.7%
MAX. BLDG. HEIGHT (FT.)	35'	12'±	35'
MAX. BLDG. COVERAGE (%)	50%	<1%	7.0%

* REQUIRED MIN. OPEN SPACE AS DEFINED IN THE ROUTE 146 OVERLAY DISTRICT (NOT INCLUDING BUILDING SETBACK AREAS) IS 35% IN THE 146 OVERLAY DISTRICT.





TURNING POINT ENGINEERING
CIVIL SITE DESIGN
P.O. Box 757 • Sutton, MA 01590
P: (508) 381-1515 F: (508) 647-0189
www.tpecivildesign.com

APPROVAL UNDER SITE PLAN REVIEW.
SUTTON PLANNING BOARD

BEING A MAJORITY

[Signature]
[Signature]
[Signature]

APPROVAL DATE: _____
ENDORSEMENT DATE: 3/25/24

PROJECT NAME

NORTHEAST GREAT DANE
#100 WORCESTER-PROVIDENCE TURNPIKE
SUTTON, MASSACHUSETTS
SUTTON MOTOR-IN TRUST
ONE MERCANTILE STREET, SUITE 540
WORCESTER, MA 01608

PREPARED FOR

Eastland Partners, Inc.
987 Millbury Street
Worcester, MA 01607

REV.	DATE	DESCRIPTION
1	1/29/24	REVISED SITE PLAN
2	2/29/24	PER REVIEW COMMENTS

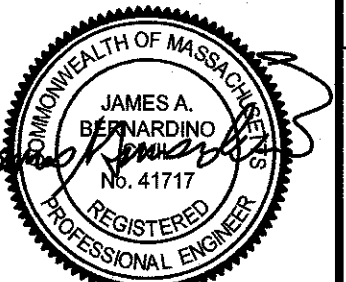
PROJECT NO.	TPE-1126
DESIGNED BY	TRB, SJO
CHECKED BY	JAB, BW
DATE	DECEMBER 14, 2023
CAD FILE	H:\GREAT DANE_SP.dwg
PLAN NO.	L-412

GRAPHIC SCALE

0 20 40 80
(IN FEET)
1 inch = 40 feet

SHEET TITLE

UTILITY PLAN



SHEET NO.

C-4.1

H:\PROJECTS\SUTTON\126-SUTTON-100 WORC-PROV TURNPIKE DWS PERMIT\PLANNING BOARD\GREAT DANE_SP-R2.DWG

H:\PROJECTS\SUTTON\126-SUTTON-100_WORC-PROV_TURNPIKE.DWG PERMIT PLANNING BOARD GREAT DANE _SP-R2.DWG

EROSION AND SEDIMENT CONTROL REQUIREMENTS

PART 1 – GENERAL

1.01 SUMMARY

A. FURNISH, INSTALL, AND MAINTAIN TEMPORARY AND PERMANENT EROSION AND SEDIMENT CONTROL MEASURES, SUCH AS, BUT NOT NECESSARILY LIMITED TO, STRAW BALE AND SILT FENCE BARRIERS, RIPRAP, VEHICLE TRACKING PADS, DIVERSION CHANNELS AND BERMS, CHECK DAMS, STRATEGICALLY LOCATED STOCKPILES, SEDIMENT BASINS, MULCH, AND SEED MIX. (HEREINAFTER "CONTROL MEASURES") ADEQUATE TO PREVENT THE CONVEYANCE OF EROSION PRODUCTS (E.G. SOIL, MULCH, SOD) OFF SITE, OR INTO ENVIRONMENTALLY SENSITIVE AREAS, OR INTO AREAS WHERE WORK WILL BE ADVERSELY IMPACTED. ENVIRONMENTALLY SENSITIVE AREAS INCLUDE, BUT ARE NOT NECESSARILY LIMITED TO, WETLANDS, TRIBUTARIES TO WETLANDS, WETLAND BUFFER ZONES, INTERMITTENT AND PERENNIAL STREAMS / RIVERS, AND THEIR ATTENDANT BUFFER ZONES.

B. ALL METHODS AND MATERIALS USED FOR EROSION CONTROL SHALL CONFORM TO THE REQUIREMENTS SET FORTH IN "EROSION AND SEDIMENT CONTROL GUIDELINES FOR URBAN AND SUBURBAN AREAS A GUIDE FOR PLANNERS, DESIGNERS, AND MUNICIPAL OFFICIALS" AS PUBLISHED BY THE MASSACHUSETTS DEPARTMENT OF ENVIRONMENTAL PROTECTION, BUREAU OF RESOURCE PROTECTION, UNLESS OTHERWISE APPROVED IN WRITING.

C. REFER TO DRAWINGS FOR LOCATION AND DETAILS OF LIMITS OF DISTURBANCE AND CONTROL MEASURES REQUIRED TO COMMENCE WORK. LIMITS OF DISTURBANCE SHALL BE MARKED WITH TAPE, SIGNS, OR ORANGE CONSTRUCTION FENCE PRIOR TO COMMENCING ANY LAND DISTURBANCE ACTIVITIES. CONTROL MEASURES WILL BE ADEQUATE ONLY FOR VEGETATION CLEARING. THE DRAWINGS ARE NOT INTENDED TO GRAPHICALLY DEPICT ALL CONTROL MEASURES THAT WILL BE REQUIRED TO MEET THE REQUIREMENTS DESCRIBED IN 1.01.A.

D. BASED ON THE COMPOSITION OF SOILS ENCOUNTERED DURING THE EXPLORATION PROGRAM, SITE SOILS ARE GENERALLY CLASSIFIED AS TYPE A SOILS AS DEFINED BY (USGS) NATIONAL RESOURCES CONSERVATION SERVICE (NRCS), FORMERLY SOIL CONSERVATION SURVEY (SCS). TEMPORARY CONSTRUCTION SLOPES SHOULD BE DESIGNED IN STRICT COMPLIANCE WITH THE MOST RECENT GOVERNING REGULATIONS. STOCKPILES SHOULD BE PLACED WELL AWAY FROM THE EDGE OF THE EXCAVATION AND THEIR HEIGHT SHOULD BE CONTROLLED TO PREVENT SURCHARGE TO THE SIDES OF THE EXCAVATION. SURFACE DRAINAGE SHOULD BE CONTROLLED TO AVOID FLOW OF SURFACE WATER INTO THE EXCAVATIONS.

E. DEVISE AND EMPLOY CONTROL MEASURES THROUGHOUT THE DURATION OF PROJECT, OVER ALL AREAS DISTURBED OR UNDISTURBED BY CONSTRUCTION, AS NECESSARY TO MEET THE REQUIREMENTS DESCRIBED IN 1.01.A.

F. DEVISE AND EMPLOY TEMPORARY CONTROL MEASURES AS NECESSARY TO MEET THE REQUIREMENTS DESCRIBED IN 1.01.A, WHILE ALLOWING WORK TO PROCEED IN AN EFFICIENT, COST EFFECTIVE MANNER.

G. DEVISE, EMPLOY AND MAINTAIN CONTROL MEASURES UNTIL SUCH TIME AS THE ENTIRE SITE IS PERMANENTLY STABILIZED BY ESTABLISHED VEGETATION, FINISH LANDSCAPE MATERIALS, PAVED SURFACES, AND/OR ROOF AREA.

H. ONCE THE SITE IS PERMANENTLY STABILIZED AND CERTIFIED AS SUCH BY ENGINEER, REMOVE TEMPORARY CONTROL MEASURES WHILE PROTECTING STABILIZED SURFACES.

1.02 SUBMITTALS

A. SUBMIT PRODUCT DATA, WARRANTY, AND TEST REPORTS AS INDICATED ON THE DRAWINGS.

B. SUBMIT SKETCH SHOWING LOCATIONS OF PROPOSED STOCKPILE AREAS, CONSTRUCTION ENTRANCES AND EROSION CONTROLS IF NOT SHOWN ON THE SITE PLAN OR DIFFERENT FROM THOSE LOCATIONS SHOWN ON THE SITE PLAN.

C. A SITE SPECIFIC SEQUENCE OF CONSTRUCTION FOR EACH PORTION OF THE SITE.

1.03 QUALITY ASSURANCE

A. COMPLY WITH GOVERNING CODES AND REGULATIONS. PROVIDE PRODUCTS FROM ACCEPTABLE MANUFACTURERS. USE EXPERIENCED INSTALLERS. DELIVER, HANDLE, AND STORE MATERIALS IN ACCORDANCE WITH MANUFACTURER'S INSTRUCTIONS.

B. CONFORM TO CONDITIONS OF APPROVAL ISSUED BY REGULATORY AGENCIES INCLUDING, BUT NOT NECESSARILY LIMITED TO, LOCAL PLANNING BOARD, CONSERVATION COMMISSION, CITY COUNCIL, BOARD OF HEALTH, PUBLIC WORKS / HIGHWAY DEPARTMENT, STATE ENVIRONMENTAL PROTECTION DEPARTMENT, AND U.S. GOVERNMENT, ENVIRONMENTAL PROTECTION AGENCY, WHERE CONDITIONS OF REGULATORY APPROVAL DIFFER FROM REQUIREMENTS CONTAINED HEREIN OR ON THE DRAWINGS, COMPLY WITH THE MORE STRINGENT REQUIREMENT.

PART 2 – PRODUCTS

2.01 MATERIALS

I. STRAW BALES: WEED FREE DRY GRASS OR STRAW, MACHINE BOUND WITH JUTE OR WIRE, APPROXIMATE SIZE EACH BALE 42" X 16" X 16". EACH BALE SHALL BE STAKED WITH A MINIMUM OF TWO 24" LONG HARDWOOD STAKES.

J. STRAW WATTLES: NORTH AMERICAN GREEN MODEL WS1210 OR APPROVED EQUAL.

K. SILT FENCE: NON-WOVEN, UV-RESISTANT, POLYPROPYLENE FABRIC, FLOW RATED AT 10 GPM/SF MINIMUM, GRAB TENSILE RATED AT 124 POUNDS MINIMUM, WITH INTEGRAL STAKE LOOPS, AND HARDWOOD STAKES. USE NO. 2130 BY AMOCO FABRICS & FIBERS, OR APPROVED EQUAL.

L. MULCH: ORGANICS INCLUDING STRAW, PROCESSED PINE / HEMLOCK TWIGS AND NEEDLES.

M. SEED MIXES: SHALL MEET THE REQUIREMENTS OF MASSACHUSETTS HIGHWAY DEPARTMENT STANDARD SPECIFICATIONS FOR HIGHWAYS AND BRIDGES, LATEST EDITION SECTION 6.03.0 OR 6.03.1 AS APPROPRIATE.

N. EXCELSIOR BLANKET: CURLED WOOD FIBER ON PHOTODEGRADABLE EXTRUDED PLASTIC MATRIX, 80% OF FIBERS 6-INCHES LONG OR LONGER, WEIGHT 0.075 POUNDS / SY, CONTAINING NO CHEMICAL ADDITIVES. USE CUREX 1 BLANKET BY AMERICAN EXCELSIOR COMPANY, OR APPROVED EQUAL.

O. ROCK RIPRAP: SOUND, ANGULAR, 6-INCH MINUS PROCESSED ROCK, BLAST ROCK, OR TALINGS.

P. CRUSHED STONE: SOUND, ANGULAR, 2-INCH MINUS PROCESSED CRUSHED STONE.

PART 3 – EXECUTION

3.01 THROUGHOUT CONSTRUCTION

A. DEVISE WORK SEQUENCE SO AS TO LIMIT DRAINAGE AREA THAT IS TRIBUTARY TO DISTURBED AREAS. DEVISE, EMPLOY, AND MAINTAIN CONTROL MEASURES SUCH AS DIVERSION CHANNELS AND BERMS, STRATEGICALLY LOCATED STOCKPILES, AND SEDIMENT BASINS TO SUBDIVIDE DRAINAGE AREAS INTO SMALL, MANAGEABLE SUBAREAS, THEREBY MINIMIZING RUNOFF AND THE POTENTIAL FOR EROSION.

B. ALL WORK SHALL BE IN ACCORDANCE WITH THE PERMITS AND APPROVALS ISSUED AND THE CONSTRUCTION SPECIFICATIONS.

C. EROSION AND SEDIMENTATION CONTROL MEASURES SHALL BE IN PLACE PRIOR TO THE COMMENCEMENT OF ANY SITE WORK OR EARTHWORK OPERATIONS. SHALL BE MAINTAINED DURING CONSTRUCTION, AND SHALL REMAIN IN PLACE UNTIL ALL SITE WORK IS COMPLETE AND GROUND COVER IS ESTABLISHED.

D. INSPECT EROSION CONTROLS DAILY THROUGHOUT CONSTRUCTION REPAIR DAMAGED CONTROLS IMMEDIATELY.

E. STRAW WATTLES SHALL BE PLACED AT ALL EXISTING & PROPOSED CATCH BASINS LOCATED IN FILL AREAS & SUBJECT TO STORMWATER RUN-OFF FROM PROPOSED FILL AREAS DURING CONSTRUCTION, OR AS DIRECTED BY THE OWNER'S REPRESENTATIVE. NO SEDIMENTS SHALL ENTER THE ON-SITE OR OFF-SITE DRAINAGE SYSTEMS AT ANY TIME.

F. STOCKPILES SHALL BE SURROUNDED ON THEIR PERIMETERS WITH STAKED STRAW WATTLES AND/OR SILTATION FENCES TO PREVENT AND/OR CONTROL SILTATION AND EROSION.

G. ALL DISTURBED OR EXPOSED AREAS SHALL BE PERMANENTLY STABILIZED WITHIN FIVE (5) BUSINESS DAYS OF COMPLETION OF CONSTRUCTION OF A GIVEN AREA. EXPOSED AREAS WHERE NO WORK HAS OCCURRED FOR FOURTEEN (14) DAYS SHALL BE TEMPORARILY STABILIZED WITH HYDROSEED OR OTHER APPROVED METHOD.

H. THE LOCATION OF TEMPORARY DRAINAGE SWALES AND SEDIMENTATION TRAPS ARE APPROXIMATE ONLY AND SHALL BE RELOCATED AS REQUIRED AS CONSTRUCTION PROGRESSES.

I. CULVERT/PIPE INLETS AND OUTFALLS SHALL BE PROTECTED BY STRAW WATTLE FILTERS UNTIL DISTURBED AREAS ARE PERMANENTLY STABILIZED.

J. ALL PROPOSED NON-RIPRAP SLOPES STEEPER THAN 3:1 SHALL BE STABILIZED WITH EXCELSIOR BLANKETS AND PROTECTED FROM EROSION.

K. MAINTAIN BARRIER AT LIMIT OF WORK AND PROTECT EXISTING VEGETATION / FACILITIES OUTSIDE OF LIMIT OF WORK.

PART 3 – CONTINUED

L. MAINTAIN SPARE MATERIAL STOCKPILES FOR IMMEDIATE EMPLOYMENT / REPAIR / EXPANSION OF CONTROL MEASURES. AT A MINIMUM, SUCH MATERIALS SHALL INCLUDE STRAW WATTLES, SILT FENCE AND STAKES, AND CRUSHED STONE.

M. INSPECT AND MAINTAIN EFFECTIVENESS OF CONTROL MEASURES BY REPAIRING AS NECESSARY TO ENSURE INTENDED FUNCTION; BY SUPPLEMENTING AS NECESSARY FOR ADEQUATE EXTENT; BY REMOVING TRAPPED PRODUCTS OF EROSION AS NECESSARY TO MAINTAIN EFFECTIVE TRAP VOLUME.

N. LIMIT EXTENT OF WORK AREA SO THAT ALL DISTURBED AREAS CAN BE STABILIZED WITH CONTROL MEASURES AS SOON AS PRACTICABLE.

O. WHEN RAINFALL GREATER THAN 1.0" IS EXPECTED, CONSIDER, DEVISE, AND EMPLOY REINFORCING CONTROL MEASURES PRIOR TO THE RAINFALL EVENT TO MEET THE REQUIREMENTS DESCRIBED IN 1.01.A. IF NECESSARY, EMPLOY TEMPORARY CONTROL MEASURES ON MATERIAL STOCKPILES TO COUNTERACT POTENTIAL SEDIMENT TRANSPORT DURING INTENSE RAINFALL.

P. WHEN VEHICLE REFUELING IS REQUIRED ON SITE, CONDUCT REFUELING OPERATIONS OUTSIDE OF ENVIRONMENTALLY SENSITIVE AREAS.

Q. PROPERLY DISPOSE OF DEBRIS, SOLID WASTE, TRASH, AND CONSTRUCTION WASTE / BYPRODUCTS OFF SITE.

3.02 SITE PREPARATION AND ACCESS

A. WALK SITE AND IDENTIFY LOCATIONS OF LIMIT OF WORK AND ENVIRONMENTALLY SENSITIVE AREAS. ESTABLISH CONSTRUCTION STAGING AREA, LOCATED BEYOND ENVIRONMENTALLY SENSITIVE AREAS.

B. INSTALL CONTROL MEASURES AS SHOWN ON THE DRAWINGS, INCLUDING THOSE DEFINING THE LIMIT OF WORK.

C. LIMIT VEHICULAR TRAFFIC TO AND FROM SITE TO MINIMIZE TRANSPORT OF SEDIMENT.

3.03 CLEARING, GRUBBING, AND STRIPPING

A. SCHEDULE GRUBBING AND STRIPPING TO OCCUR IMMEDIATELY PRIOR TO EARTH DISTURBANCE. DEPENDING ON SITE AREA, CONSIDER MULTIPLE GRUBBING PHASES, SEQUENCED TO TAKE ADVANTAGE OF THE EROSION PREVENTION POTENTIAL OF EXISTING VEGETATIVE COVER.

B. MINIMIZE THE AREA OF EXISTING VEGETATION REMOVED WHEREVER POSSIBLE. NO GREATER THAN FIVE (5) ACRES SHALL BE UNSTABLE AT ANY TIME.

C. LOCATE AND SIZE STOCKPILES TO MINIMIZE EROSION POTENTIAL, TAKING ADVANTAGE OF TERRAIN SLOPE AND ASPECT, WHERE APPROPRIATE.

D. PROTECT VEGETATION, INCLUDING ROOT SYSTEMS, BEYOND LIMIT OF CLEARING.

E. PROCESS TIMBER, STUMPS, SLASH, AND BRUSH SO AS TO PROTECT ENVIRONMENTALLY SENSITIVE AREAS AND INSTALLED CONTROL MEASURES. PROPERLY DISPOSE OF EXCESS OFF SITE. BURIAL OF STUMPS ON SITE IS PROHIBITED.

3.04 EXCAVATION FOR BUILDING FOUNDATIONS AND UTILITIES

A. DEVISE AND INSTALL CONTROL MEASURES ADEQUATE TO HANDLE DISCHARGES AND TRAP SEDIMENT FROM FOOTING SUMP AND WELL POINT PUMPS PRIOR TO EXCAVATION.

B. ARMOR SUMP PUMP DISCHARGE LOCATIONS TO PREVENT EROSION AT POINT OF DISCHARGE AND AREAS DOWNSTREAM.

C. IF FOUNDATION EXCAVATIONS GRADE TO DAYLIGHT ON THE LOW SIDE, DEVISE AND INSTALL CONTROL MEASURES TO HANDLE SURFACE AND GROUNDWATER FLOW FROM EXCAVATION LOW POINT.

D. STOCKPILE EXCAVATED MATERIALS TO BAFFLE OVERLAND RUNOFF, AVOIDING THE CREATION OF LENGTHY PATHS OF CONCENTRATED RUNOFF. STOCKPILE SLOPES SHALL NOT EXCEED 2:1.

E. BACKFILL UTILITY TRENCHES AS SOON AS PRACTICABLE TO PREVENT FLOODING, SLOUGHING, POTENTIAL OVERFLOW, AND REPETITIVE EARTH DISTURBANCE.

3.05 SITE GRADING

A. WHERE APPLICABLE, FOLLOW EXCAVATION AND FILL PRACTICES SHOWN ON DRAWINGS TO LOCALIZE AND MINIMIZE EROSION.

B. MONITOR SEDIMENT VOLUME IN TEMPORARY SEDIMENT BASINS AND AT DIVERSION BERMS AND CHECK DAMS. IN ALL AREAS EXCEPT THOSE THAT DO NOT PRESENT POTENTIAL PROBLEMS WITH REGARD TO FUTURE SOIL STABILITY, DRAINAGE, OR BEARING CAPACITY, REMOVE AND PROPERLY DISPOSE OF TRAPPED SEDIMENT BEFORE BRINGING SITE TO FINAL SUBGRADE.

C. EXPOSED SOILS SHALL BE PERMANENTLY STABILIZED WITHIN FIVE (5) BUSINESS DAYS OF COMPLETION OF CONSTRUCTION OF A GIVEN AREA. EXPOSED AREAS WHERE NO WORK HAS OCCURRED FOR FOURTEEN (14) DAYS SHALL BE TEMPORARILY STABILIZED WITH HYDROSEED OR OTHER APPROVED METHOD.

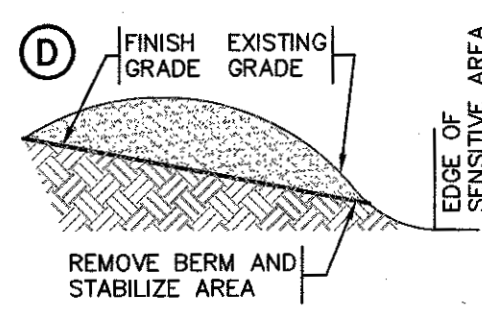
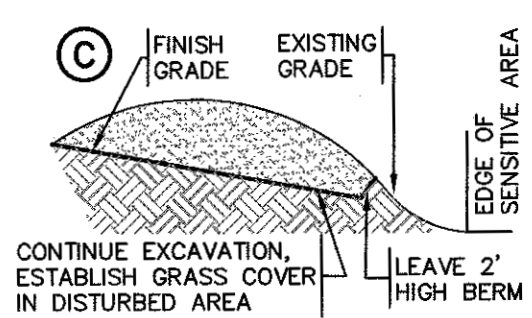
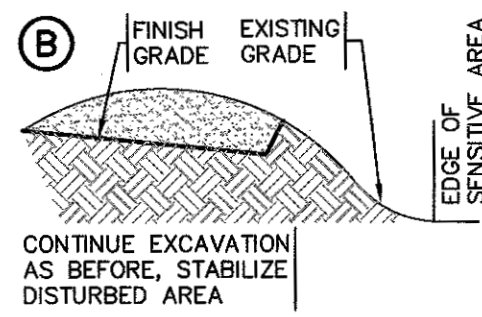
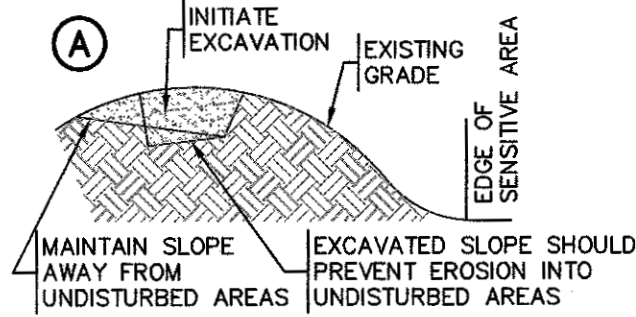
D. SLOPES STEEPER THAN 3:1 SHALL BE STABILIZED IMMEDIATELY AFTER COMPLETION.

3.06 LANDSCAPING

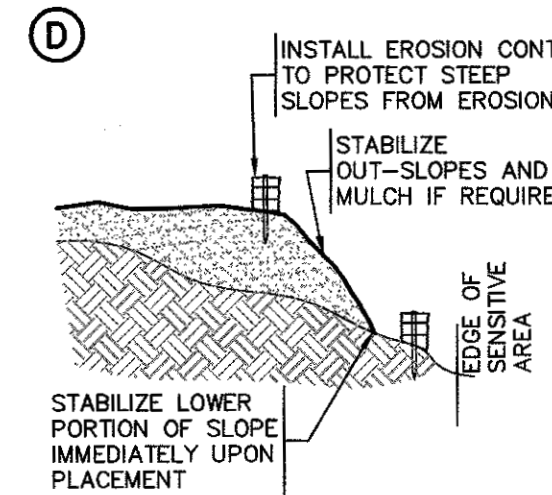
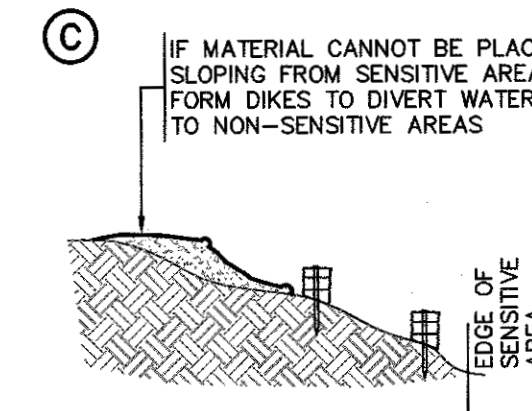
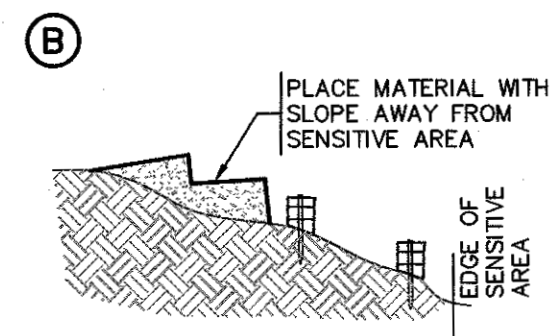
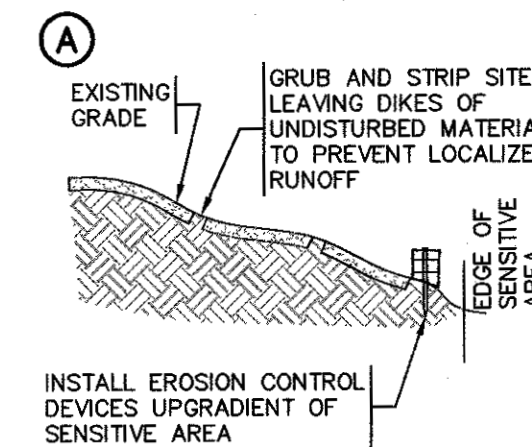
A. COMPLETE LANDSCAPING AS SOON AS POSSIBLE AFTER COMPLETION OF FINAL SUBGRADE.

B. IMMEDIATELY AFTER PLACEMENT OF TOPSOIL, STABILIZE WITH CONTROL MEASURES INCLUDING, BUT NOT NECESSARILY LIMITED TO, SEED MIX, MULCH, AND / OR BLANKET.

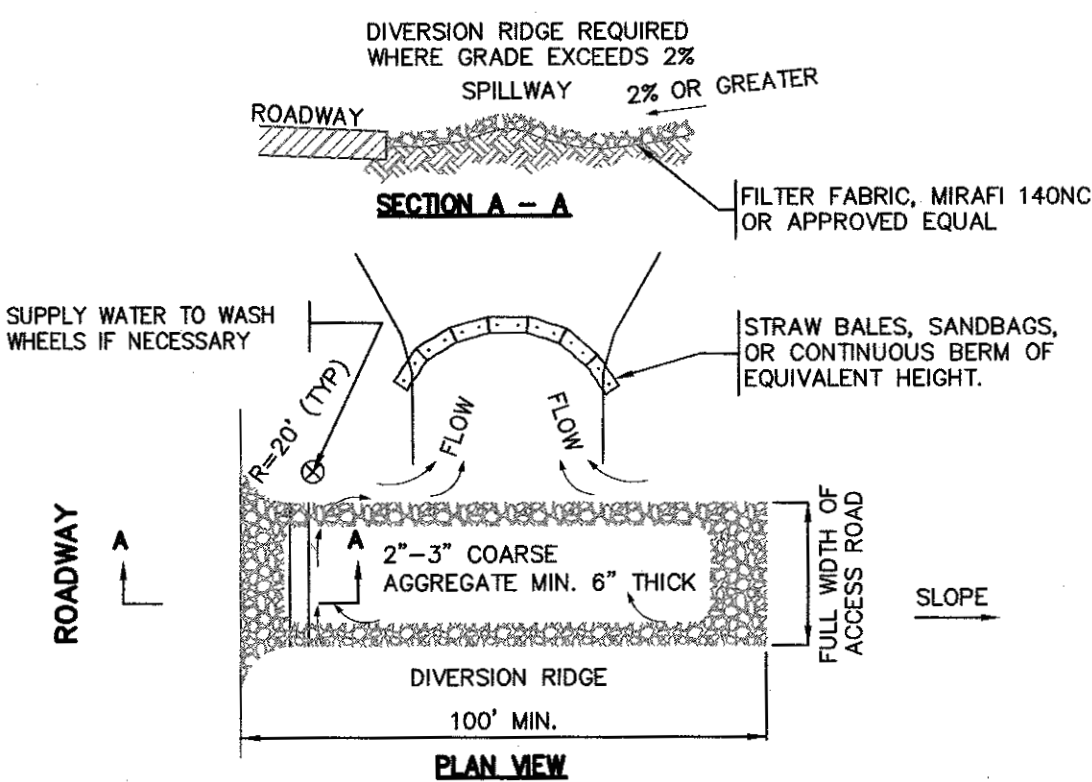
C. PERMANENT SEEDING MAY BE PERFORMED IN THE SPRING PRIOR TO JULY 1 AND IN BETWEEN AUGUST 1 AND OCTOBER 15. PERMANENT SEEDING AT OTHER TIMES SHALL BE APPROVED AND SHALL ONLY BE ALLOWED WITH AN APPROVED MULCHING AND IRRIGATION PROGRAM.



1 EXCAVATION PROCEDURE
N.T.S.

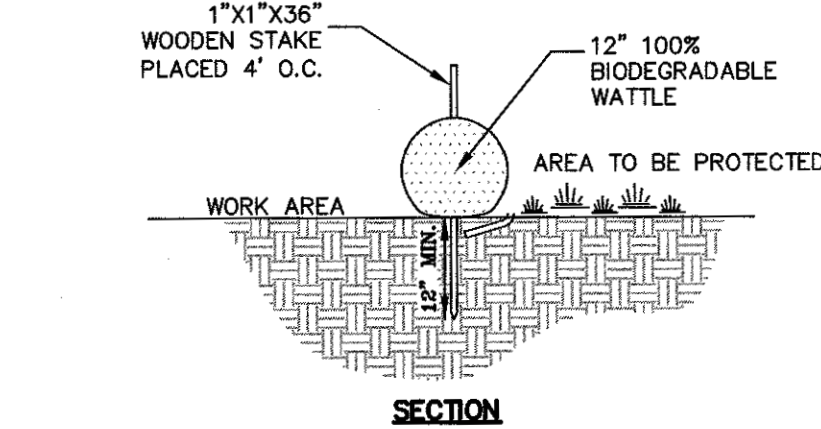
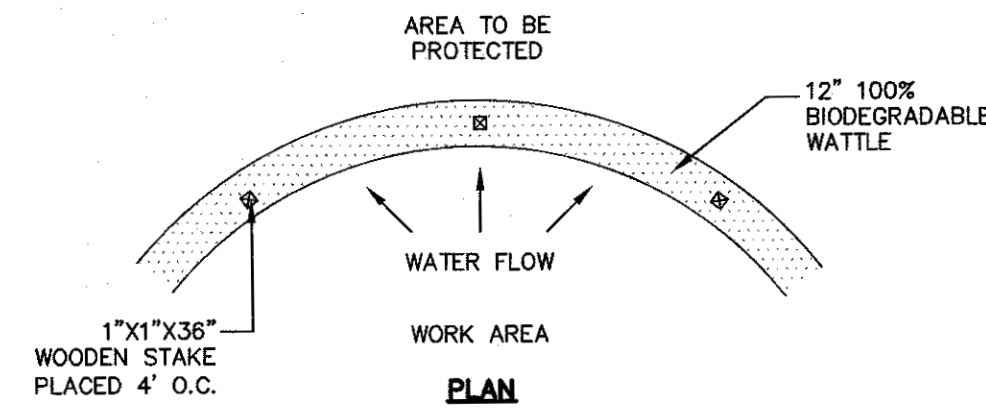


3 FILL PROCEDURE
N.T.S.

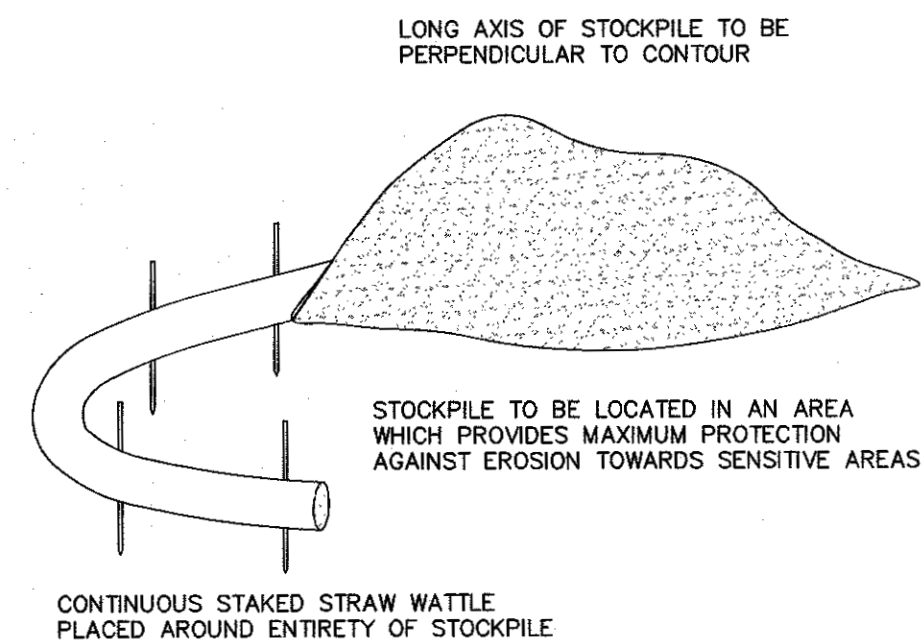


- NOTES:
- [1] THE ENTRANCE SHALL BE MAINTAINED IN A CONDITION THAT WILL PREVENT TRACKING OR FLOWING OF SEDIMENT ONTO PUBLIC RIGHT-OF-WAYS. THIS MAY REQUIRE TOP DRESSING, REPAIR AND/OR CLEANOUT OF ANY MEASURES USED TO TRAP SEDIMENT.
 - [2] WHEN NECESSARY, WHEELS SHALL BE CLEANED PRIOR TO ENTRANCE ONTO PUBLIC RIGHT-OF-WAY.
 - [3] WHEN WASHING IS REQUIRED, IT SHALL BE DONE ON AREA STABILIZED WITH CRUSHED STONE THAT DRAINS INTO AN APPROVED SEDIMENT TRAP OR SEDIMENT BASIN.
 - [4] USE SANDBAGS, STRAW BALES OR OTHER APPROVED METHODS TO CHANNELIZE RUNOFF TO BASIN AS REQUIRED.

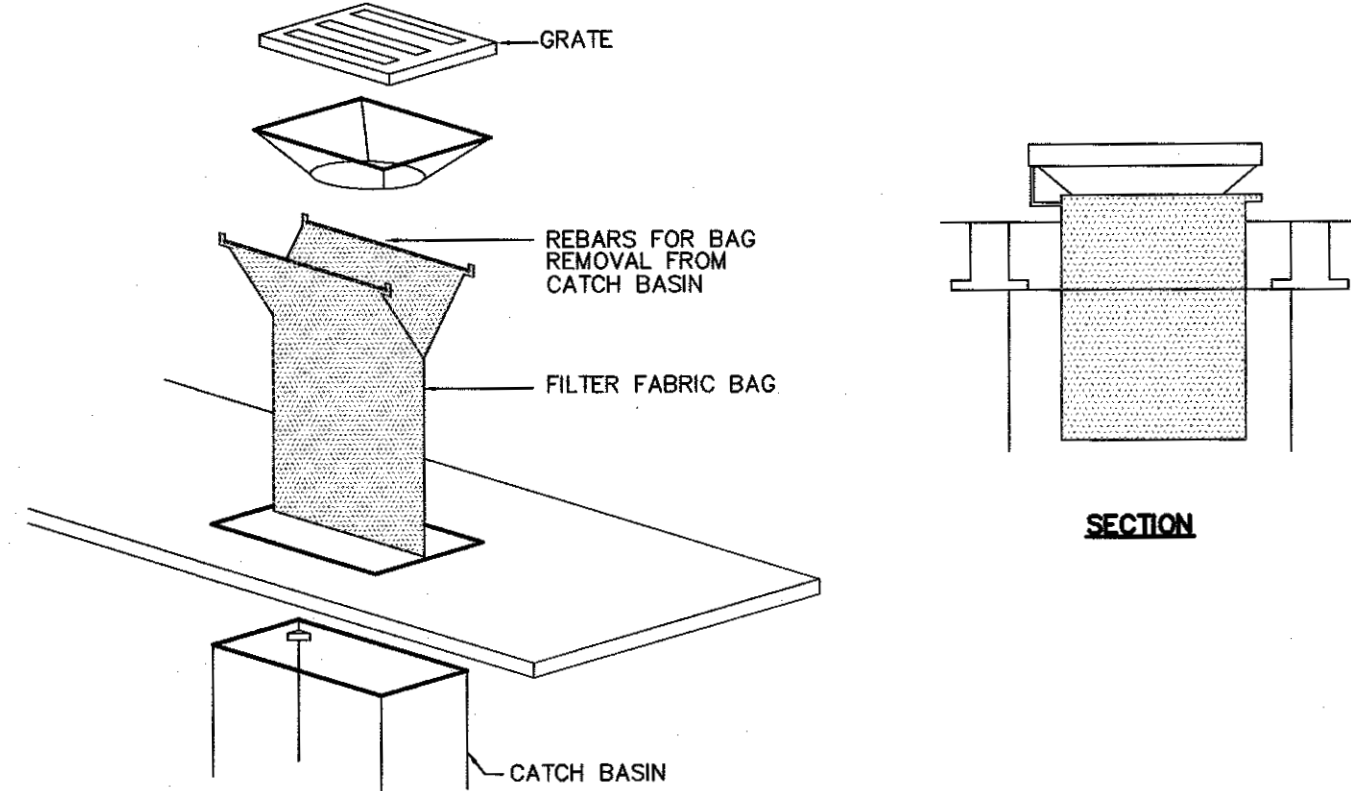
5 CONSTRUCTION ENTRANCE
N.T.S.



2 EROSION CONTROL BARRIER (ECB)
N.T.S.



4 TEMPORARY STOCKPILE
N.T.S.



- NOTES:
- [1] TO BE SILTSTACK BY ATLANTIC CONSTRUCTION FABRICS, INC., OR APPROVED EQUAL.
 - [2] TO BE INSTALLED IMMEDIATELY FOLLOWING THE INSTALLATION OF CATCH BASIN STRUCTURE AND REMAIN UNTIL FINISH COURSE IS PLACED.
 - [3] FILTER BAG SHALL BE MAINTAINED AND CLEANED AS NEEDED.

6 CATCH BASIN FILTER BAG
N.T.S.

TURNING POINT ENGINEERING
CIVIL SITE DESIGN
P.O. Box 757 • Sutton, MA 01590
P:(508) 381-1515 F:(508) 647-0189
www.tpecivildesign.com

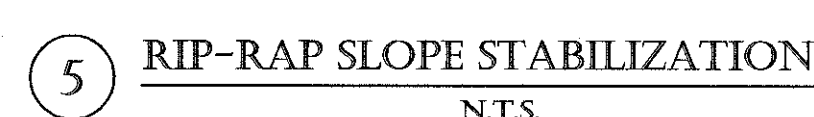
APPROVAL UNDER SITE PLAN REVIEW.
SUTTON PLANNING BOARD
BRING A MAJORITY
[Signature]
[Signature]
[Signature]
APPROVAL DATE: _____
ENDORSEMENT DATE: 7/25/24

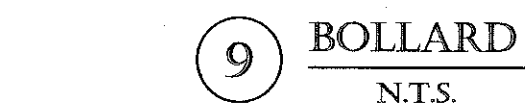
PROJECT NAME
NORTHEAST GREAT DANE
#100 WORCESTER-PROVIDENCE TURNPIKE
SUTTON, MASSACHUSETTS
SUTTON MOTOR-IN TRUST
ONE MERCANTILE STREET, SUITE 540
WORCESTER, MA 01608
PREPARED FOR
Eastland Partners, Inc.
807 Main Street
Worcester, MA 01607

REV.	DATE	REVISIONS			PROJECT NO.	DESIGNED BY	CHECKED BY	DATE	CAD FILE	PLAN NO.
		DESCRIPTION	REVISED SITE PLAN	PER REVIEW COMMENTS						
1	1/29/24				TPE-1126	TRB, SJO	JAB, BW	DECEMBER 14, 2023	H:\GREAT DANE_SP.dwg	L-412
2	2/29/24									

SHEET TITLE
EROSION CONTROL PLAN,
NOTES & DETAILS

SHEET 2 OF 3
SHEET NO.
C-6.2







③ SLOPED GRANITE EDGING
N.T.S.

④ LIGHT POLE BASE
N.T.S.



6 ACCESSIBLE CURB RAMPS (AR)
N.T.S.

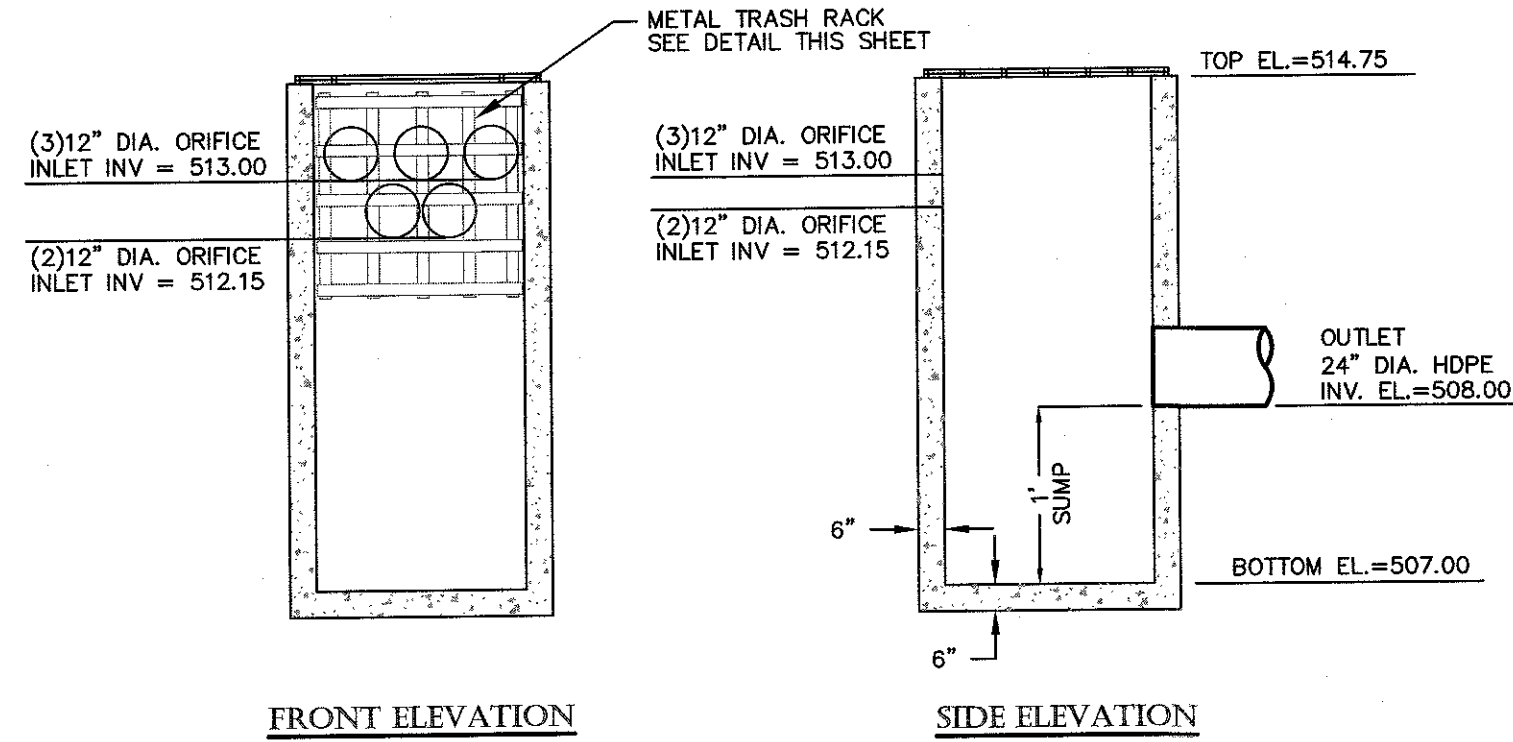
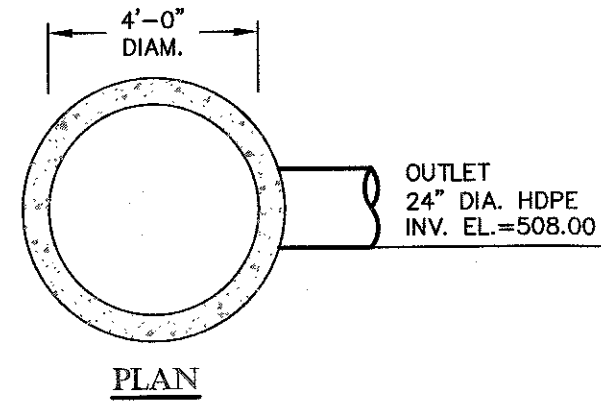


9 TYPICAL BREAKAWAY SIGN POST
N.T.S.

⑩ DETECTABLE WARNING PLATE FOR ACCESSIBLE RAMPS
N.T.S.

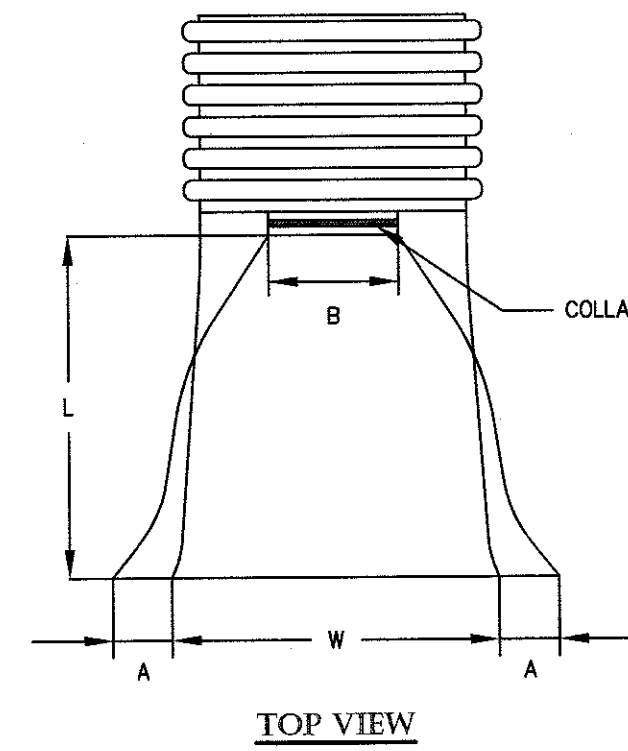
C-7.2

H:\PROJECTS\SUTTON 1128-SUTTON-100 WORC-PROV TURNPIKE DMS PERMIT PLANNING BOARD\GREAT DANE_CS-R2.DWG

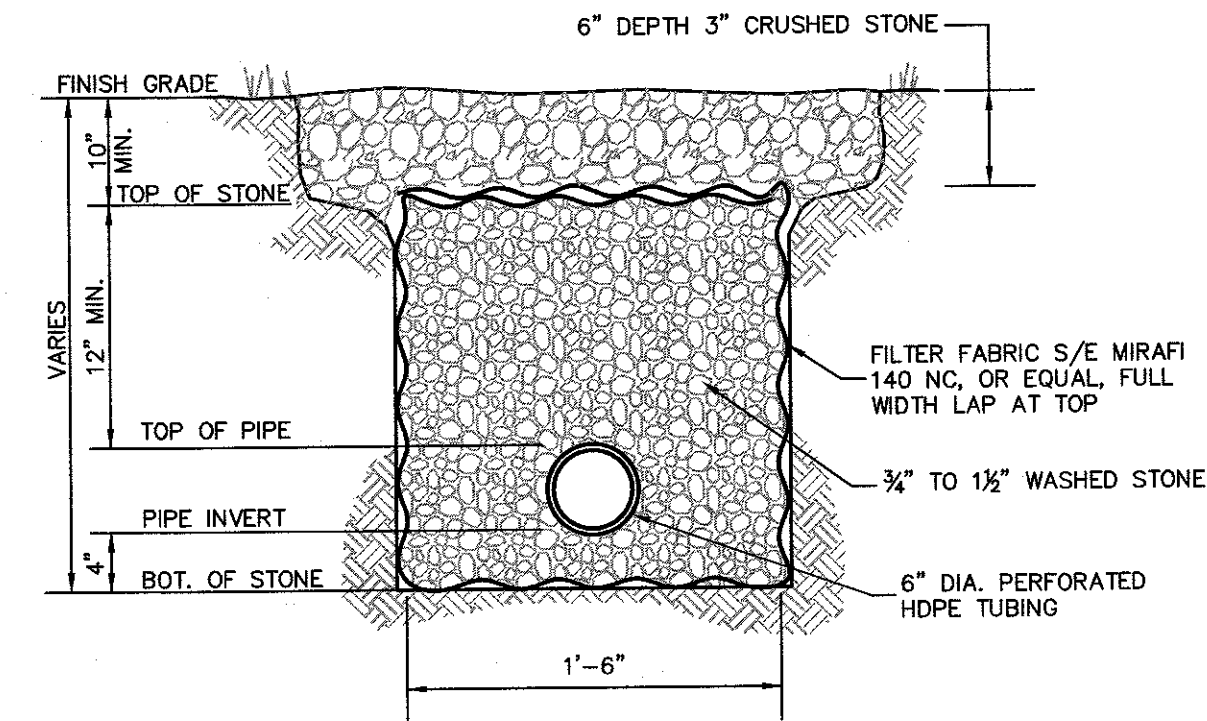
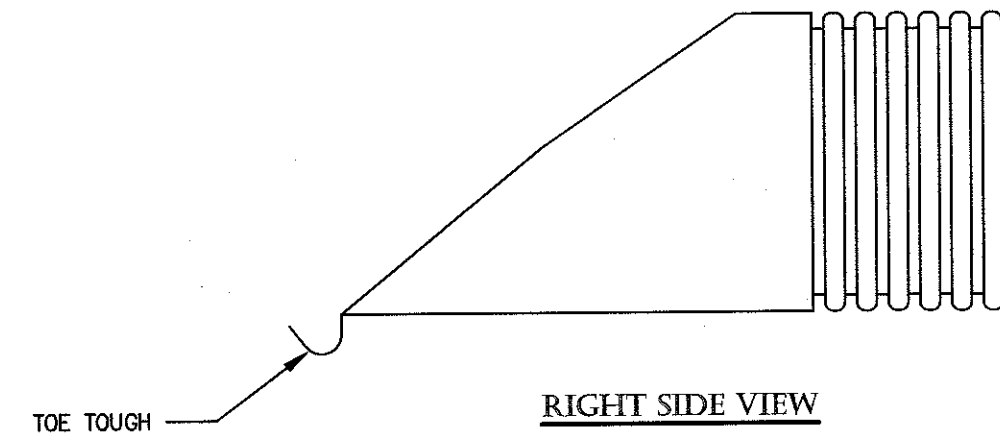
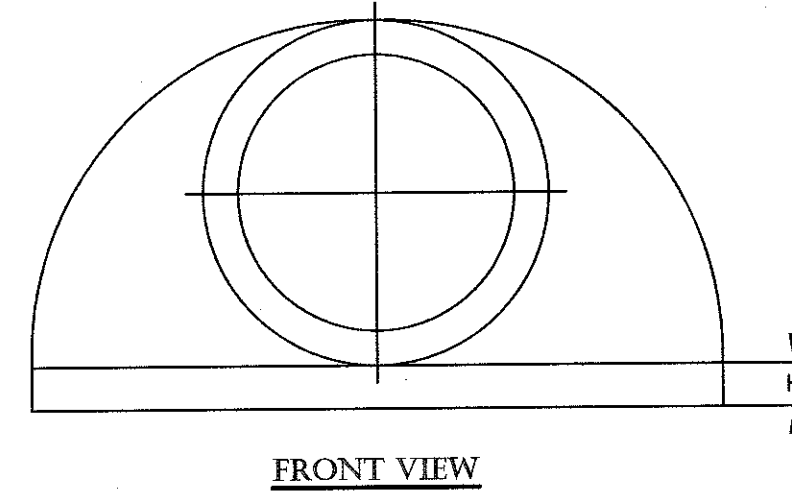


1 OUTLET CONTROL STRUCTURE BASIN #1 (OCS#1)
N.T.S.

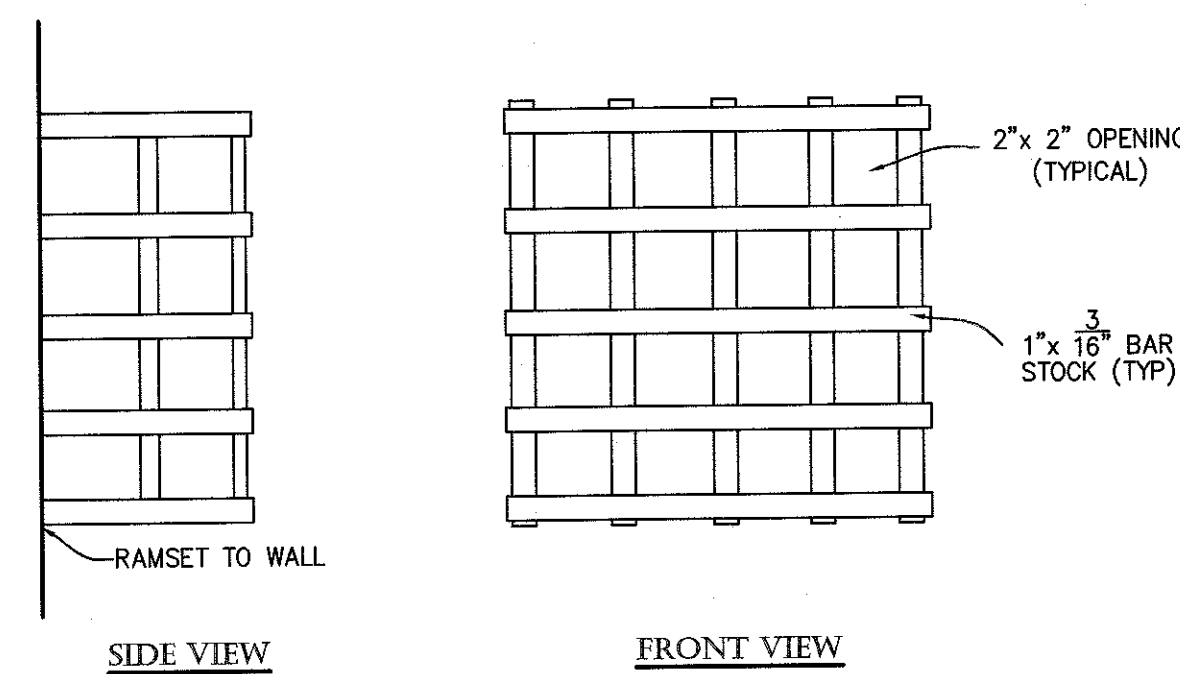
PIPE DIAMETER (INCHES)					
DIAMETER (INCHES)	12	15	18	24	30
A (INCHES)	6.5	6.5	7.5	7.5	7.5
B (MAX) (INCHES)	10.0	10.0	15.0	18.0	22.0
H (INCHES)	6.5	6.5	6.5	6.5	8.6
L (INCHES)	25.0	25.0	32.0	36.0	58.0
W (INCHES)	29.0	29.0	35.0	45.0	63.0



2 CORRUGATED POLYETHYLENE FLARED-END SECTION (FES)
N.T.S.

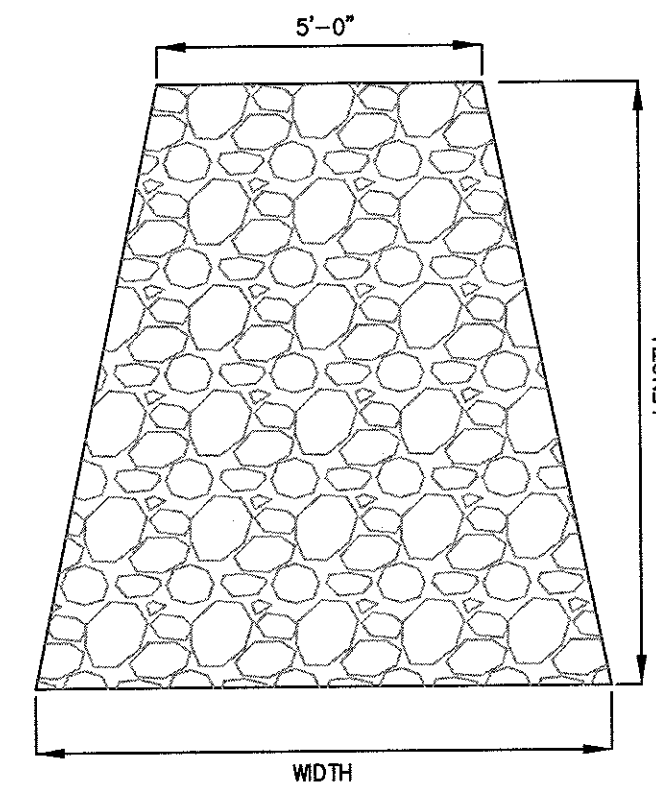


3 CURTAIN DRAIN
N.T.S.

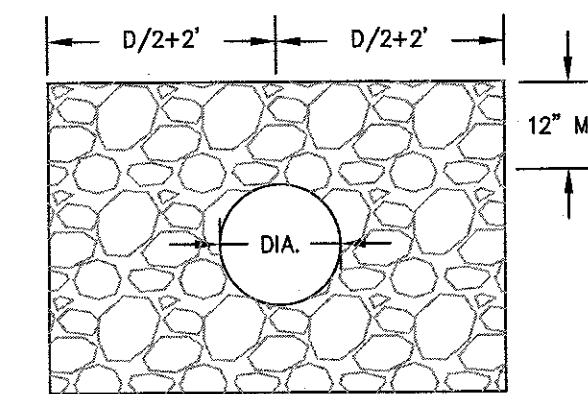


4 METAL TRASH RACK
N.T.S.

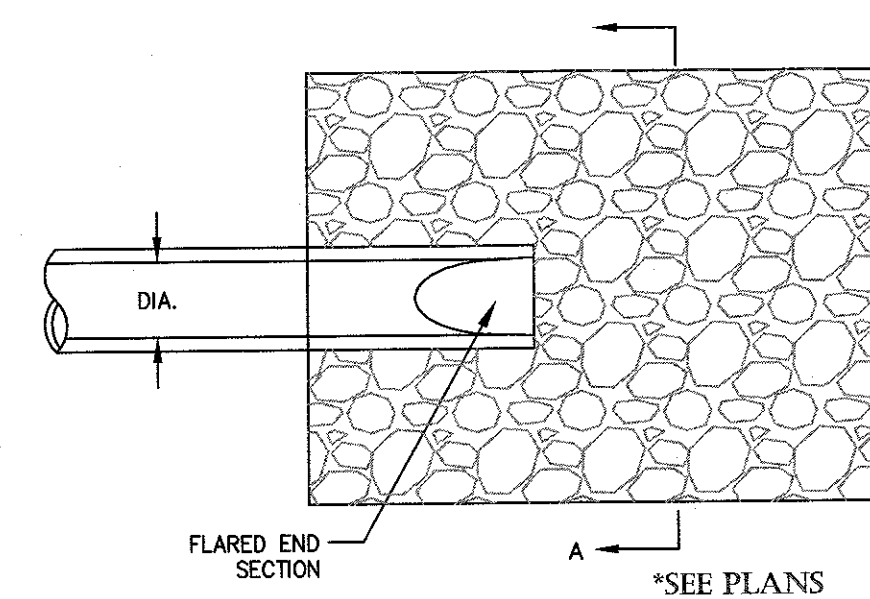
RIP-RAP DIMENSIONS:		
FES #	WIDTH	LENGTH
1	10'	18'
2	10'	16'
3	16'	27'
4	17'	28'



TYPICAL OUTFALL RIP-RAP APRON



SECTION A-A



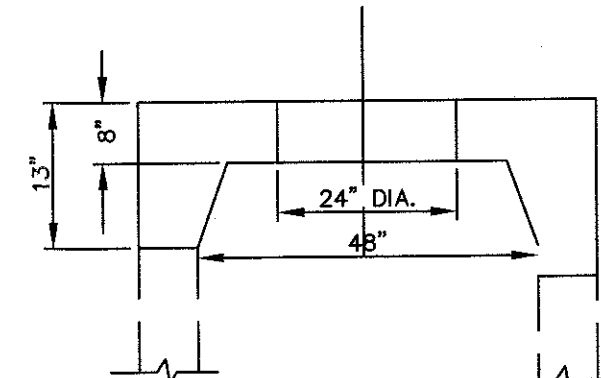
NOTES:

1. MINIMUM STONE DIAMETER: 6"
2. MINIMUM WEIGHT OF STONE: 50 LBS.
3. MAXIMUM WEIGHT OF STONE: 125 LBS.
4. PLACE ALL RIP-RAP OVER FILTER FABRIC, AMOCO 4508 OR APPROVED EQUAL.

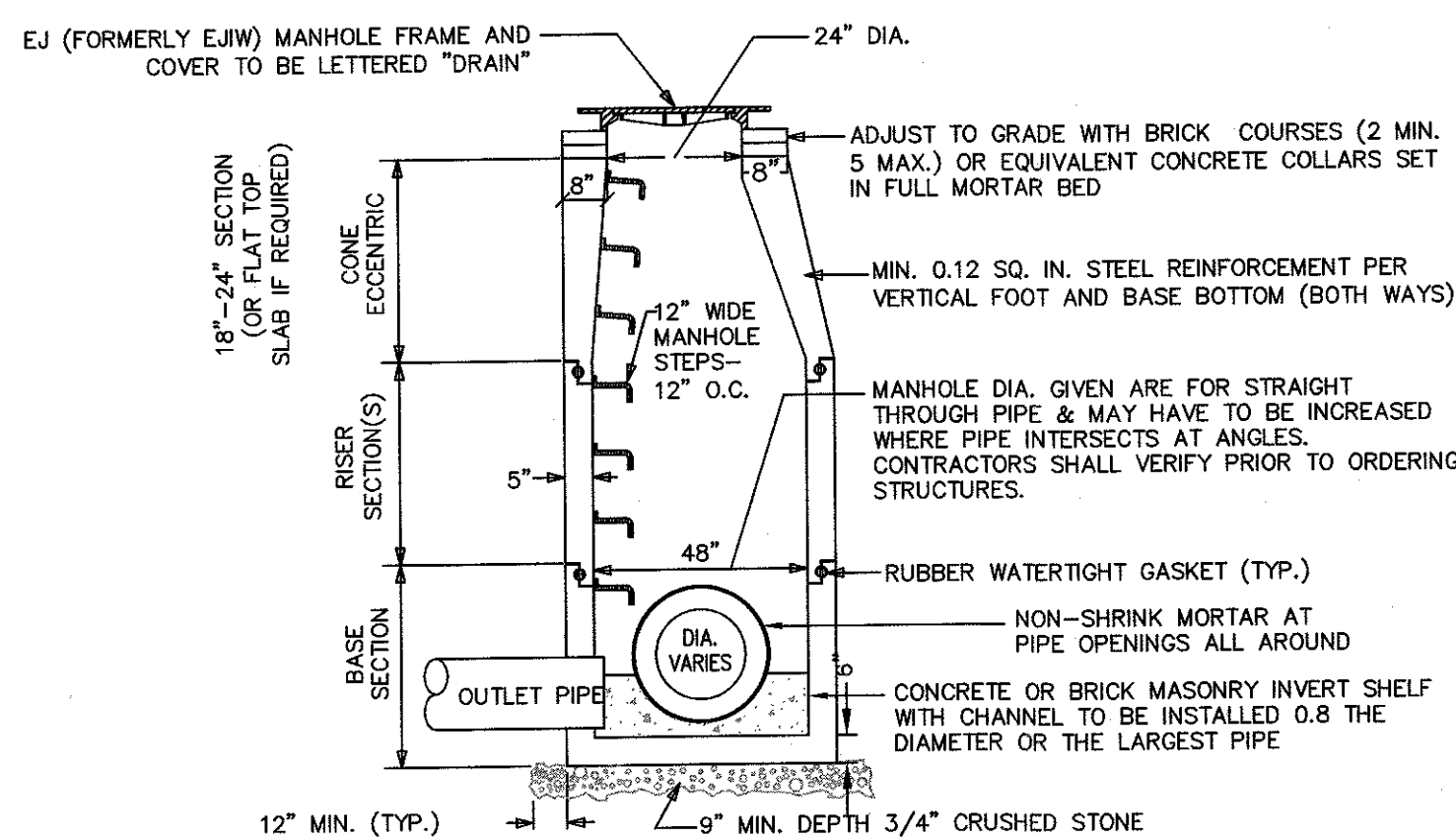
5 STONE RIP-RAP FOR PIPE ENDS
N.T.S.

NOTES:

1. REINFORCED STEEL CONFORMS TO LATEST A185 SPEC. 0.12 SQ. IN./LINEAL FT. (0.15 SQ. IN. FOR 60" DIA) AND BASE BOTTOM.
2. CONCRETE COMPRESSIVE STRENGTH 4000 PSI MIN.
3. MANHOLE DESIGN CONFORMS TO LATEST ASTM C478 SPEC. FOR "PRECAST REINFORCED CONCRETE MANHOLE SECTIONS".
4. JOINT SEALANT SHALL BE SYNTHETIC RUBBER GASKET THAT COMPLIES W/ C-443 OR C-361. 5. BASE SECTION SHALL BE ONE POUR MONOLITHIC.



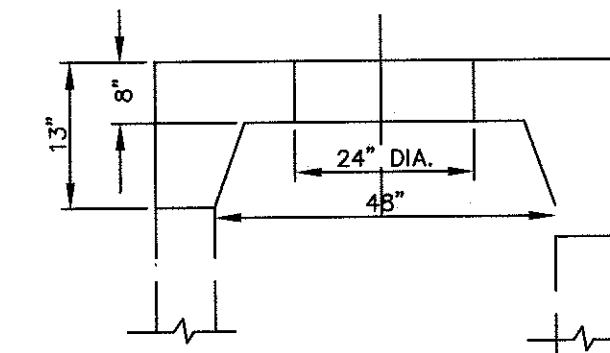
ALTERNATE TOP SLAB SECTION
(STEEL REINFORCED FOR HS-20 LOADING)



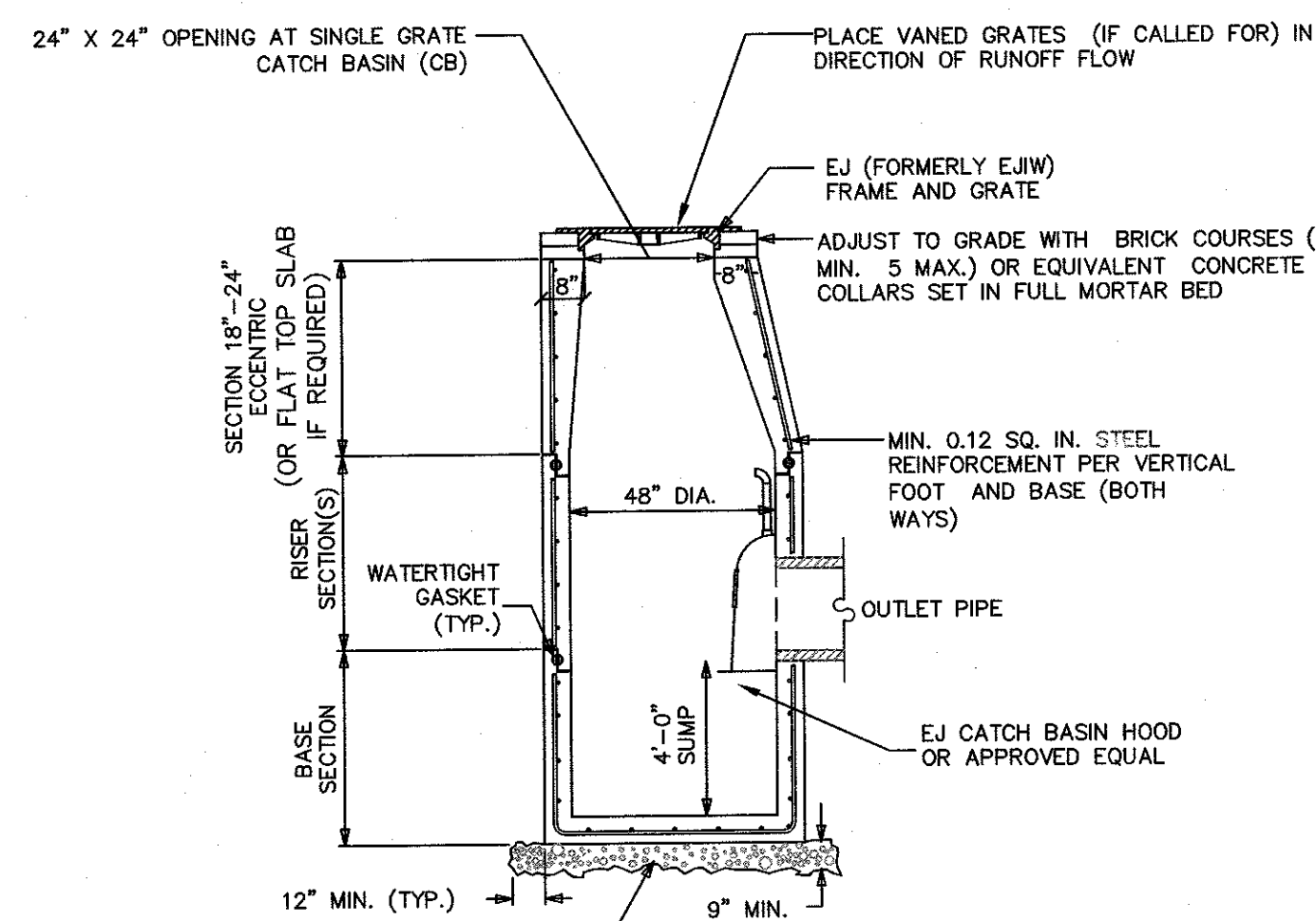
6 PRECAST CONCRETE DRAIN MANHOLE
N.T.S.

NOTES:

1. USE 4-FLANGE EJ (FORMERLY EJW) GRATES AT ALL CB STRUCTURES.
2. SUBMIT SHOP DRAWINGS FOR APPROVAL.
3. REINFORCED STEEL CONFORMS TO LATEST A185 SPEC. 0.12 SQ. IN./LINEAL FT. (0.15 SQ. IN. FOR 60" DIA) AND BASE BOTTOM.
4. CONCRETE COMPRESSIVE STRENGTH 4000 PSI MIN.
5. JOINT SEALANT SHALL BE SYNTHETIC RUBBER GASKET THAT COMPLIES W/ C-443 OR C-361.



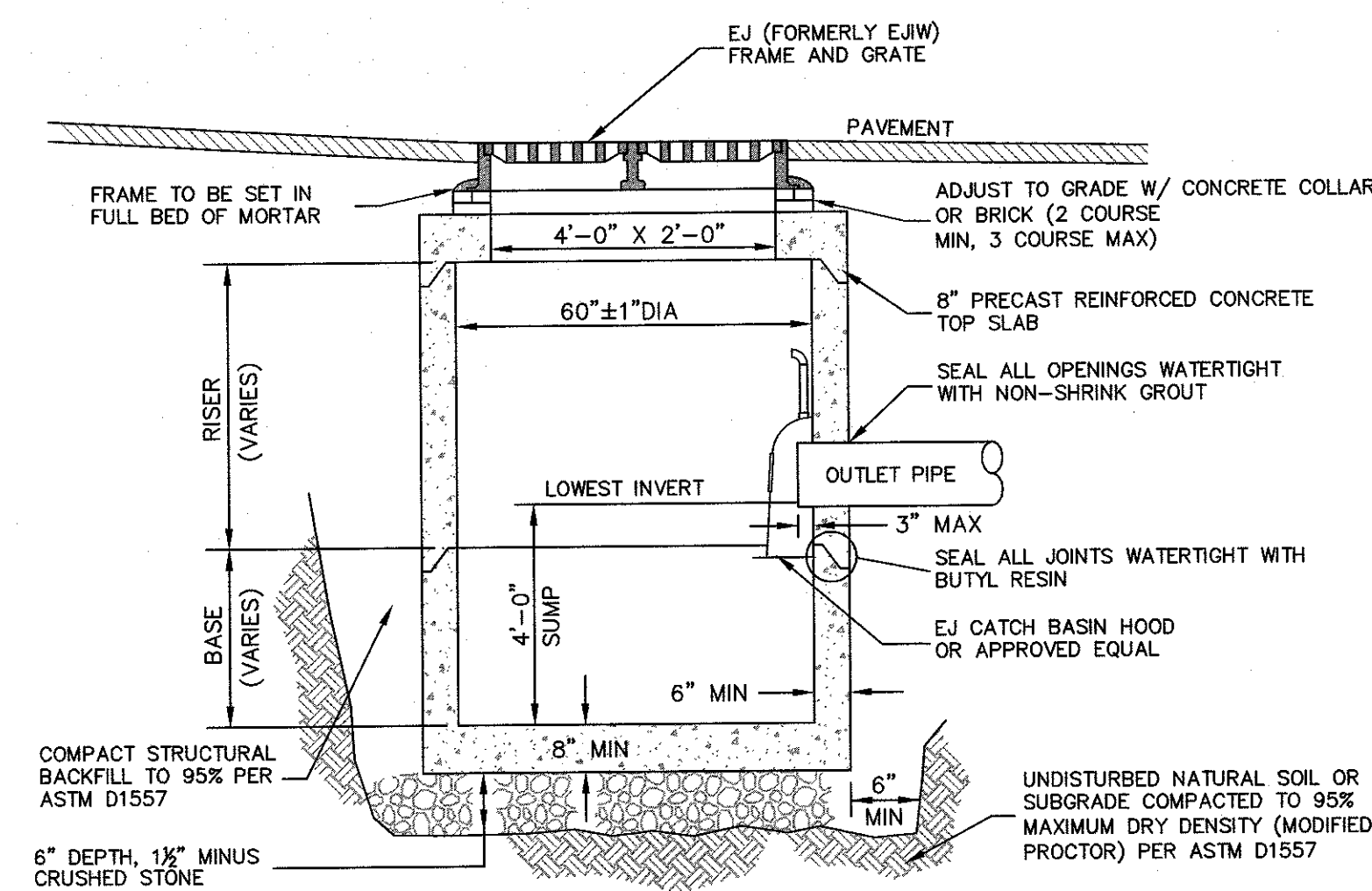
ALTERNATE TOP SLAB SECTION
(STEEL REINFORCED FOR HS-20 LOADING)



7 PRECAST CONCRETE DEEP SUMP CATCH BASIN
N.T.S.

NOTES:

1. 4,000 PSI PRECAST CONCRETE AT 28 DAYS CONFORMING WITH LATEST ASTM C478.
2. REINFORCING PER LATEST ASTM A185.
3. STRUCTURE SHALL BE RATED FOR H-20 LOADING UNLESS SPECIFIED OTHERWISE.
4. VERIFY FRAME AND GRATE TO SUIT APPLICATION.



SECTION

8 PRECAST CONCRETE DOUBLE GRATE DEEP SUMP CATCH BASIN
N.T.S.

APPROVAL UNDER SITE PLAN REVIEW,
SUTTON PLANNING BOARD

BRING A MAJORITY
[Signature]
[Signature]
[Signature]

APPROVAL DATE: _____
ENDORSEMENT DATE: 3/14/24

PROJECT NAME
NORTHEAST GREAT DANE
#100 WORCESTER-PROVIDENCE TURNPIKE
SUTTON, MASSACHUSETTS
SUTTON MOTOR-IN TRUST
ONE MERCANTILE STREET, SUITE 540
WORCESTER, MA 01608
PREPARED FOR
Eastland
Eastland Partners, Inc.
17 Millbury Street
Worcester, MA 01607

REVISIONS		DESCRIPTION
REV.	DATE	DESCRIPTION
1	1/29/24	REVISED SITE PLAN
2	2/29/24	PER REVIEW COMMENTS
PROJECT NO. TPE-1128		
DESIGNED BY TRB, SJO		
CHECKED BY JAB, BW		
DATE DECEMBER 14, 2023		
CAD FILE H:\GREAT DANE_SP.dwg		
PLAN NO. L-412		

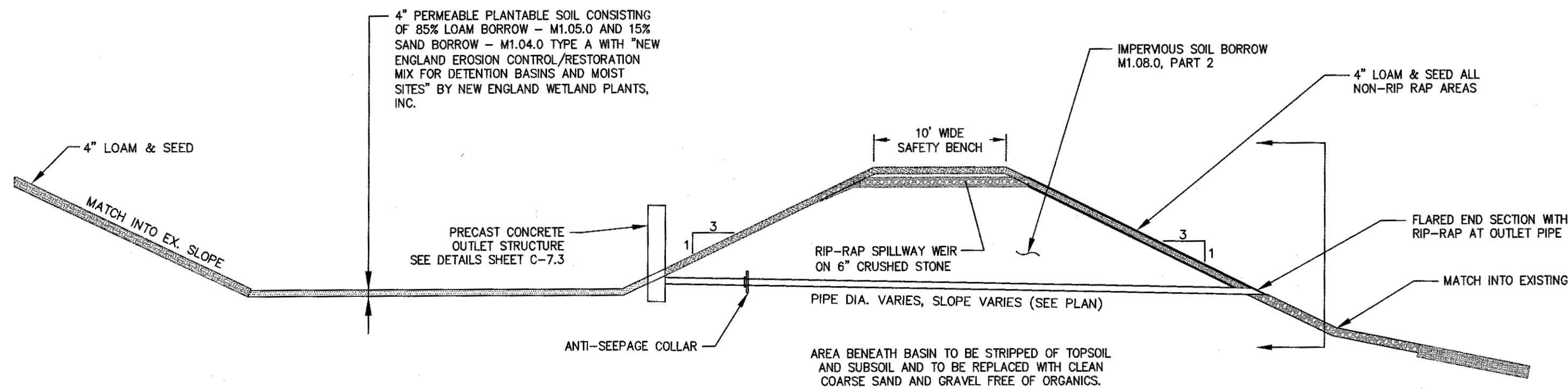
SHEET TITLE

CONSTRUCTION DETAILS

SHEET 3 OF 5

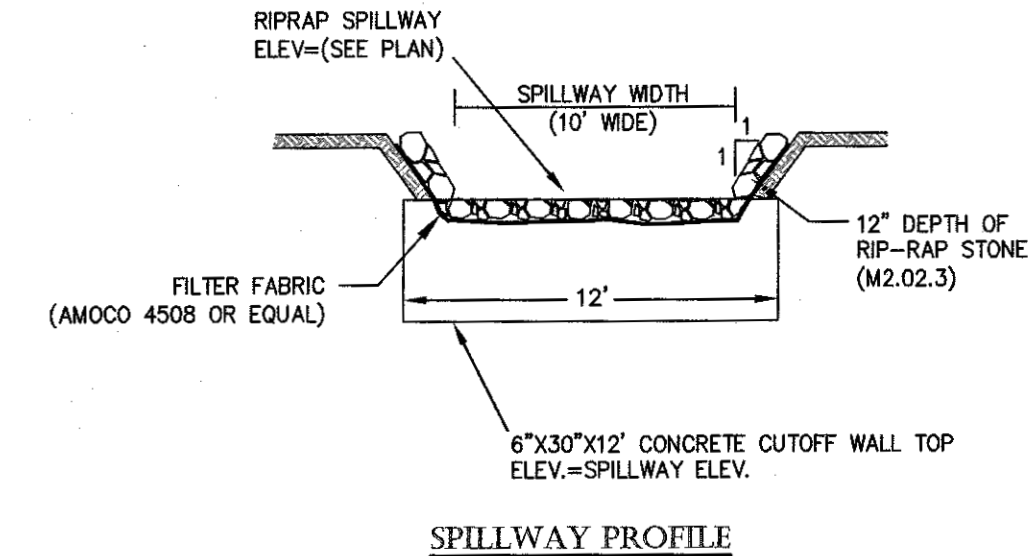
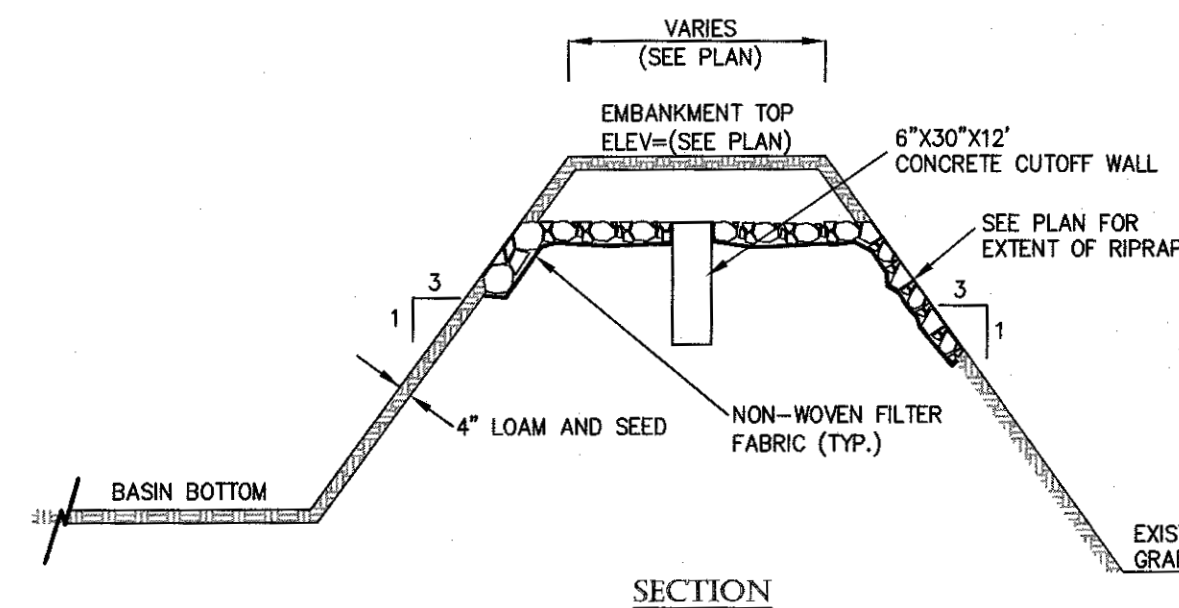
SHEET NO.
C-7.3

NOTES:
1. ALL TOP AND SUBSOIL SHALL BE REMOVED PRIOR TO CONSTRUCTION OF INFILTRATION BASIN.
2. INFILTRATION BASINS NOT TO BE USED FOR SEDIMENT BASINS DURING CONSTRUCTION.

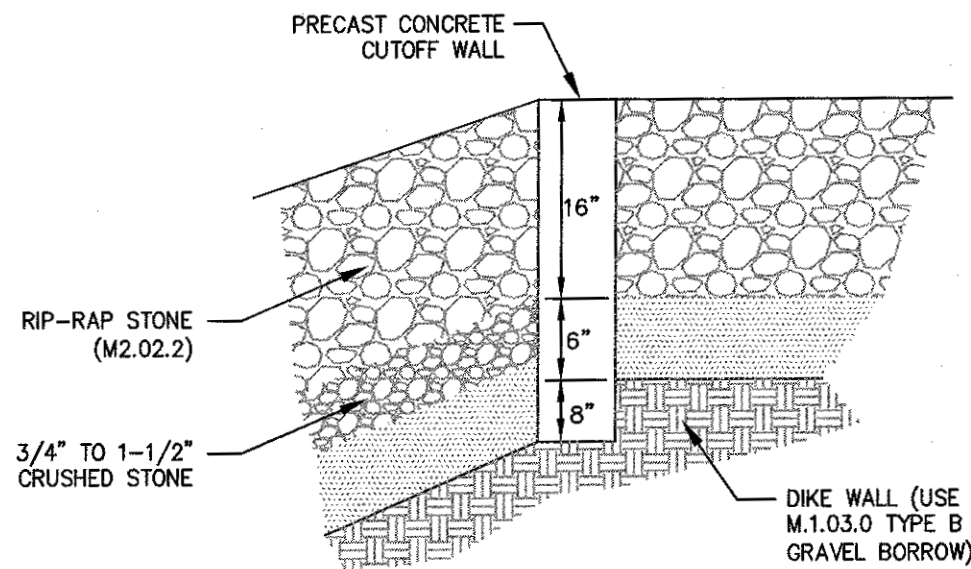


1 TYPICAL STORMWATER BASIN CROSS SECTION
N.T.S.

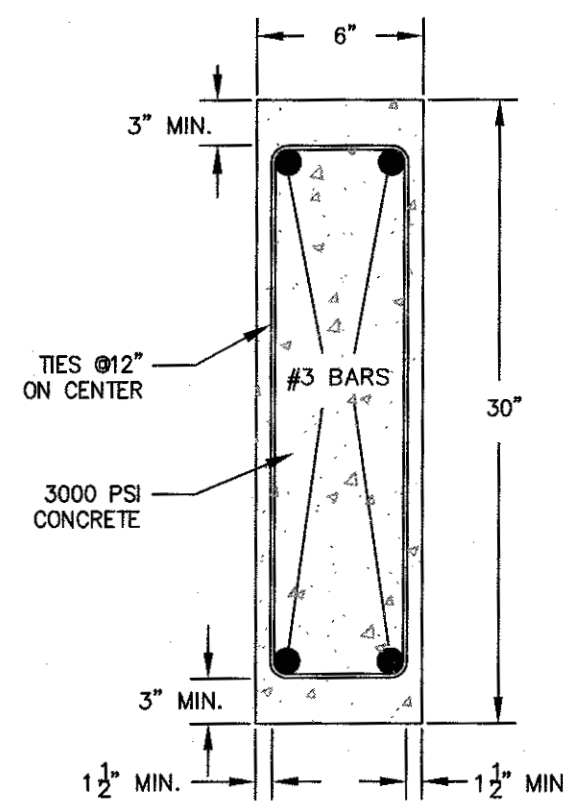
NOTES:
1. EMBANKMENT TO BE CONSTRUCTED OF CLEAN FILL FREE OF ORGANIC SOILS/MATERIALS WITH NO STONES OVER 12" MAX. DIMENSION. EMBANKMENT TO BE CONSTRUCTED IN COMPACTED LIFTS NOT TO EXCEED 8".
2. BASIN BOTTOM AND SIDE SLOPES (INSIDE AND OUT) TO BE COVERED WITH 4" LOAM AND SEED.
3. RIP-RAP SPILLWAY STONE (M2.02.2).



2 TYPICAL BASIN EMBANKMENT/SPILLWAY
N.T.S.



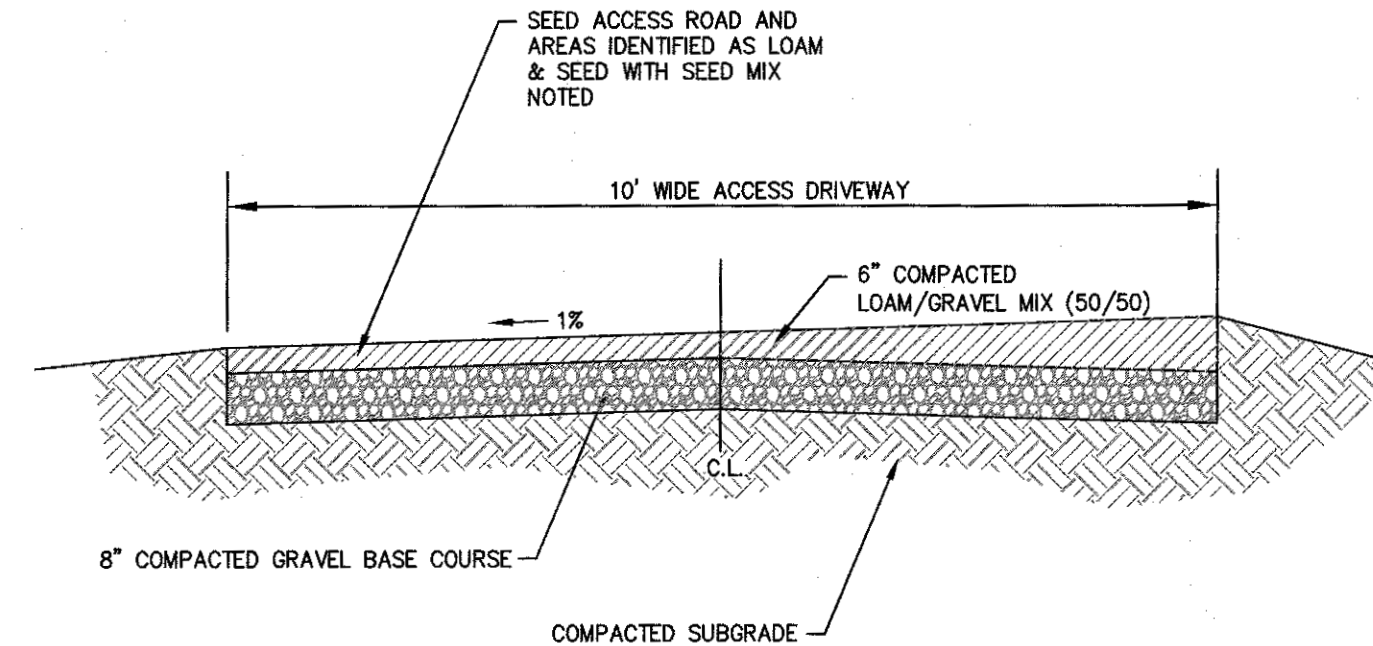
3 CUTOFF WALL CONFIGURATION
N.T.S.



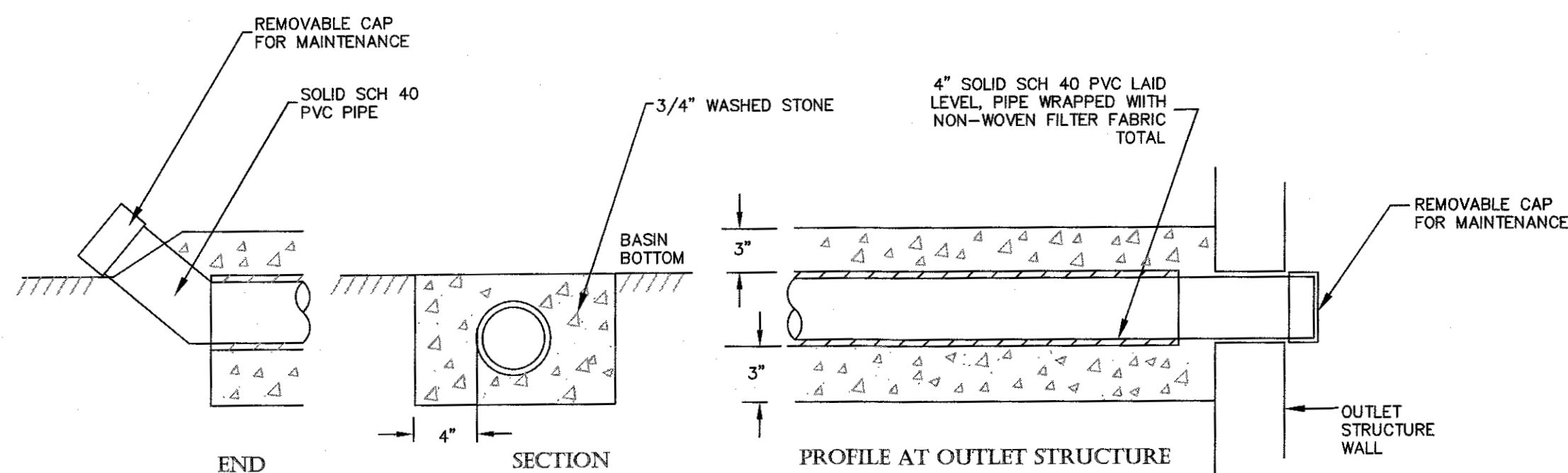
4 PRECAST CONCRETE CUTOFF WALL
N.T.S.

NOTE:
1. SEED ACCESS ROAD AND AREAS IDENTIFIED AS LOAM & SEED WITH SEED MIX NOTED BELOW

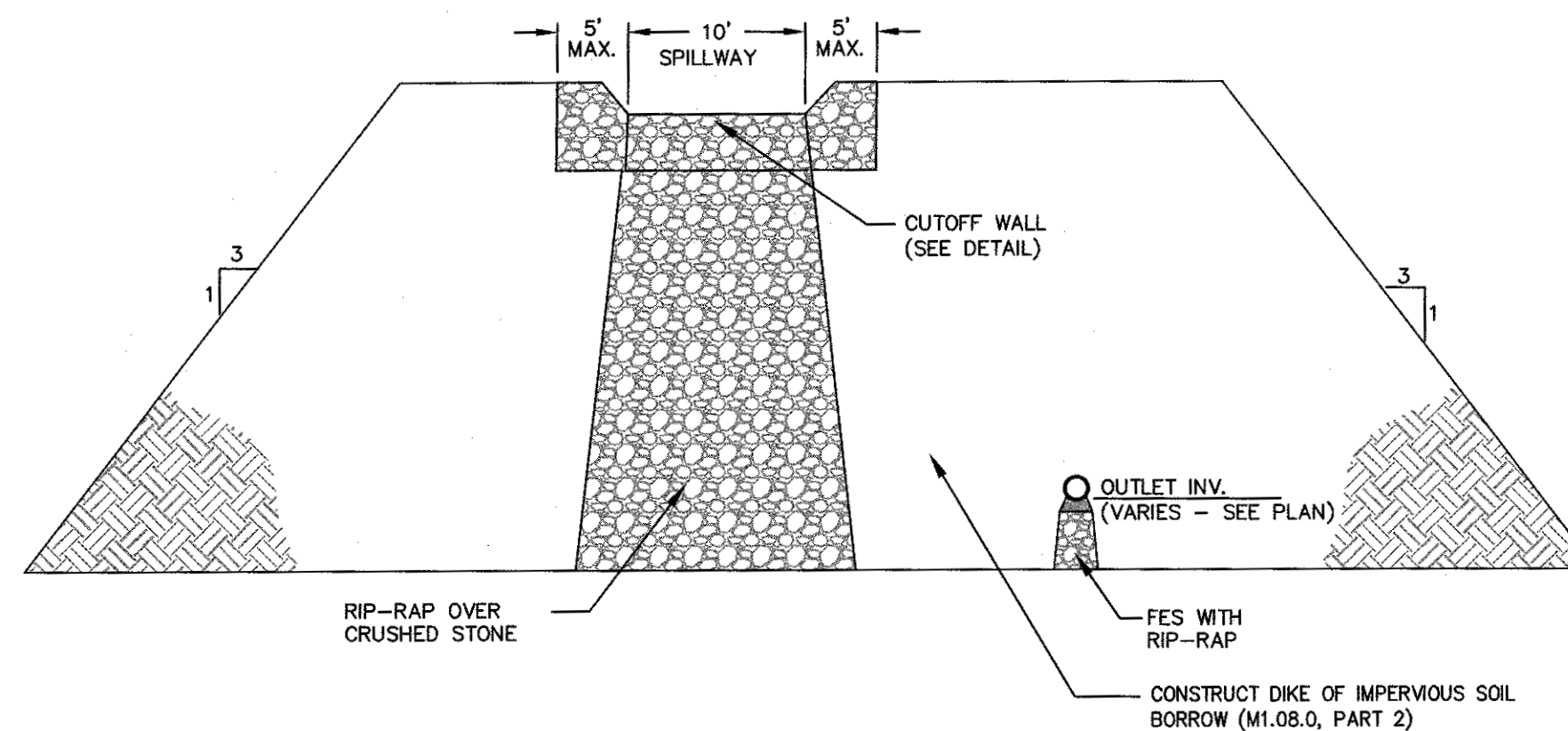
SEED
CREEPING FESCUE IMPROVED VARIETIES 70
KENTUCKY BLUE GRASS IMPROVED VARIETIES 15
PERENNIAL RYE GRASS IMPROVED VARIETIES 15



5 BASIN ACCESS DRIVE
N.T.S.

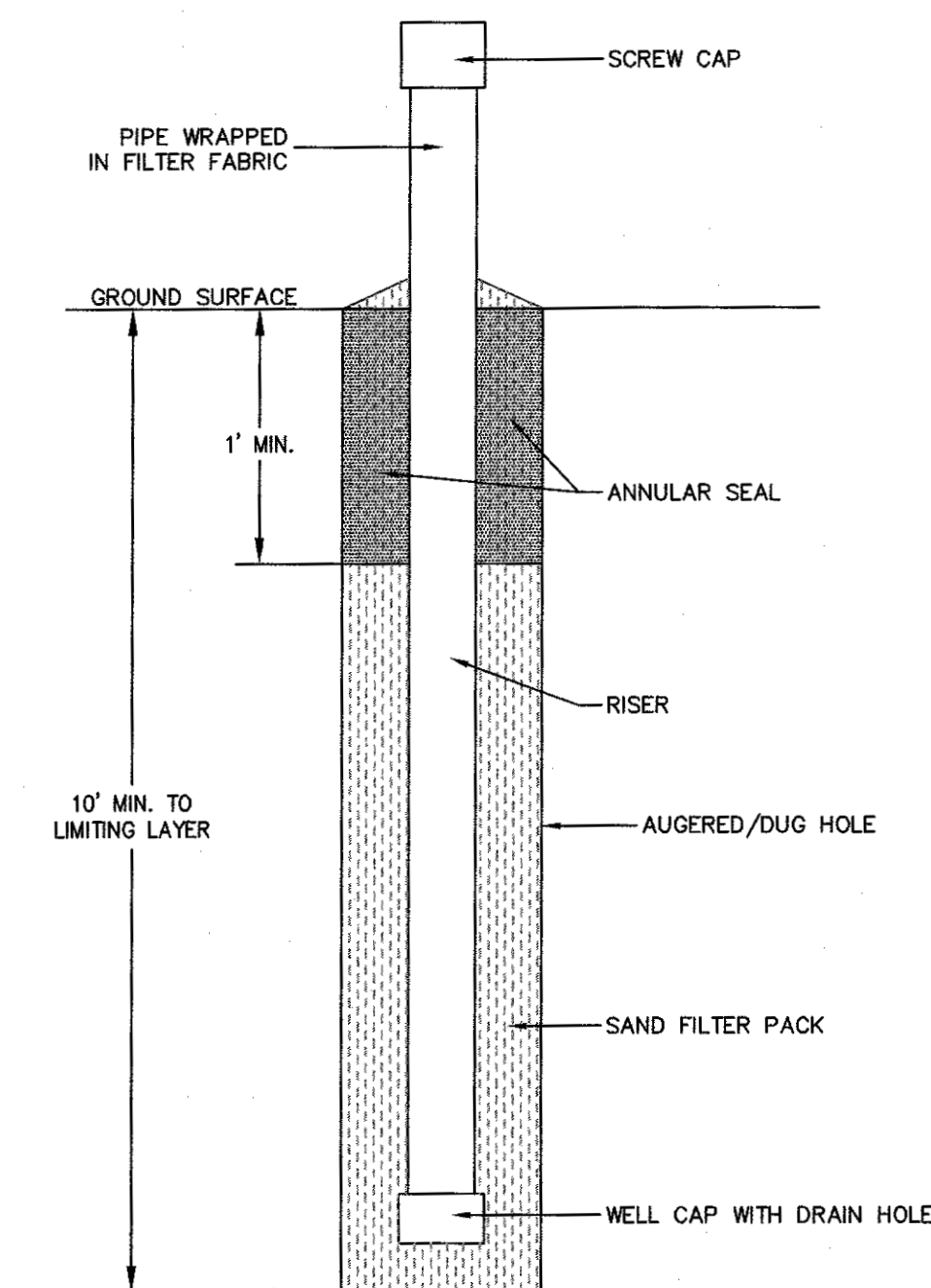


6 DRAWDOWN DEVICE
N.T.S.



7 TYPICAL BASIN ELEVATION
N.T.S.

NOTES:
1. MONITORING WELL TO BE MINIMUM 2IN DIAMETER PERFORATED SCH-40 PVC PIPE.
2. PIPE SHALL BE WRAPPED IN FILTER FABRIC IF INSTALLED IN OPEN HOLE.
3. END OF PIPE TO BE HAVE SCREW CAP AND BE RAISED 1 FOOT ABOVE THE SURROUNDING GROUND.



8 MONITORING WELL
N.T.S.

TURNING POINT ENGINEERING
CIVIL SITE DESIGN
P.O. Box 757 • Sutton, MA 01590
P:(508) 381-1515 F:(508) 647-0189
www.tpecivilsitedesign.com

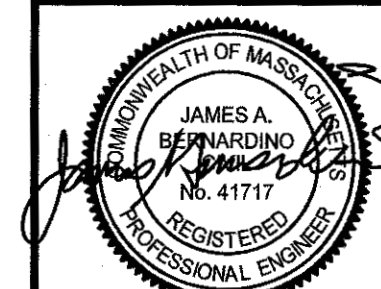
APPROVAL UNDER SITE PLAN REVIEW.
SUTTON PLANNING BOARD
BEING A MAJORITY
APPROVAL DATE: 2/14/24
ENDORSEMENT DATE: 2/14/24

PROJECT NAME
NORTHEAST GREAT DANE
#100 WORCESTER-PROVIDENCE TURNPIKE
SUTTON, MASSACHUSETTS
SUTTON MOTOR-IN TRUST
ONE MERCANTILE STREET, SUITE 540
WORCESTER, MA 01608
PREPARED FOR
Eastland
Eastland Partners, Inc.
997 Millbury Street
Worcester, MA 01607

REVISIONS			PROJECT INFORMATION		
REV.	DATE	DESCRIPTION	PROJECT NO.	DESIGNED BY	CHECKED BY
1	1/29/24	REVISED SITE PLAN	TPE-1126	TRB, SJO	JAB, BW
2	2/29/24	PER REVIEW COMMENTS			
			DATE	DECEMBER 14, 2023	
			CAD FILE	H:\GREAT DANE_SP.dwg	
			PLAN NO.	L-412	

SHEET TITLE
CONSTRUCTION DETAILS
SHEET 4 OF 5

SHEET NO.
C-7.4



H:\PROJECTS\SUTTON\1126-SUTTON-100 WPC-PROV TURNPIKE\LAND\PLANNING BOARD\GREAT DANE_SP-R2.DWG

NOTES:

1. ALL FITTINGS SHALL BE COMPRESSION TYPE.
2. ALL APPURTANANCES SHALL CONFORM TO TOWN SPECIFICATIONS.
3. MECHANICAL JOINTS TO BE MEGALUG, OR APPROVED EQUAL.

1 **TYPICAL WATER SUPPLY DETAILS**
N.T.S.

2 **TYPICAL FIRE HYDRANT CONNECTION DETAIL**
N.T.S.

3 **HYDROWORKS HD6 (72" DIA.)**
N.T.S.

4 **HYDRODOME HD4 (48" DIA.)**
N.T.S.

TURNING POINT ENGINEERING
CIVIL SITE DESIGN
P.O. Box 757 • Sutton, MA 01590
P: (508) 381-1515 F: (508) 947-0189
www.tpecivil.com

APPROVAL UNDER SITE PLAN REVIEW.
SUTTON PLANNING BOARD
BEING A MAJORITY
[Signature]
[Signature]
APPROVAL DATE: 3/24/24
ENDORSEMENT DATE: 3/24/24

PROJECT NAME
NORTHEAST GREAT DANE
#100 WORCESTER-PROVIDENCE TURNPIKE
SUTTON, MASSACHUSETTS
SUTTON MOTOR-IN TRUST
ONE MERCANTILE STREET, SUITE 540
WORCESTER, MA 01608

REV.	DATE	DESCRIPTION
1	1/29/24	REVISED SITE PLAN
2	2/29/24	PER REVIEW COMMENTS

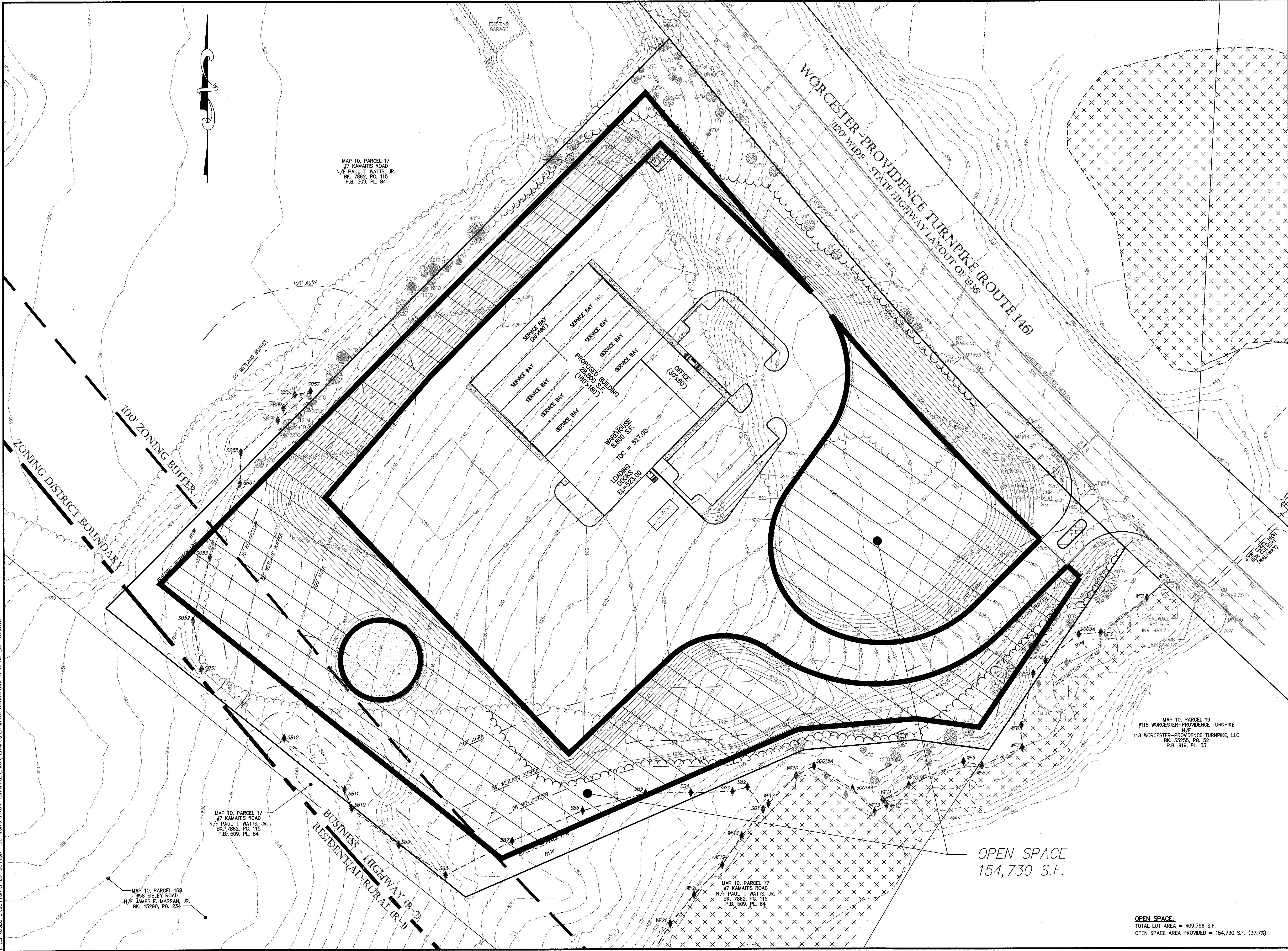
PROJECT NO.	TPE-1126
DESIGNED BY	TRB, SJO
CHECKED BY	JAB, BW
DATE	DECEMBER 14, 2023
CAD FILE	H:\GREAT DANE_SP.dwg
PLAN NO.	L-412


SHEET TITLE
CONSTRUCTION DETAILS
SHEET 5 OF 5

SEAL OF THE COMMONWEALTH OF MASSACHUSETTS
JAMES A. BERNARDINO
No. 41711
REGISTERED PROFESSIONAL ENGINEER

SHEET NO.
C-7.5

Eastland
Eastland Partners, Inc.
897 Military Street
Worcester, MA 01607





TURNING POINT ENGINEERING

CIVIL SITE DESIGN

P.O. Box 757 • Sutton, MA 01590
P: (508) 381-1515 F: (508) 647-0189
www.tpecivil.com

APPROVAL UNDER SITE PLAN REVIEW.
SUTTON PLANNING BOARD

BRING A MAJORITY

[Signature]

[Signature]

APPROVAL DATE: _____
ENDORSEMENT DATE: 9/24/24

PROJECT NAME

NORTHEAST GREAT DANE
#100 WORCESTER-PROVIDENCE TURNPIKE
SUTTON, MASSACHUSETTS
SUTTON MOTOR-IN TRUST
ONE MERCANTILE STREET, SUITE 540
WORCESTER, MA 01608

PREPARED FOR

Eastland Partners, Inc.
997 Milbury Street
Worcester, MA 01607

REV.	DATE	DESCRIPTION
1	1/29/24	REVISED SITE PLAN
2	2/29/24	PER REVIEW COMMENTS

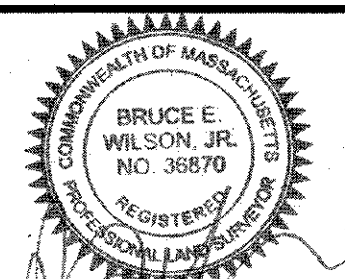
PROJECT NO.	TPE-1126
DESIGNED BY	TRB, SJO
CHECKED BY	JAB, BW
DATE	DECEMBER 14, 2023
CAD FILE	H:\GREAT DANE_SP.dwg
PLAN NO.	L-412

GRAPHIC SCALE

0 20 40 80
(IN FEET)
1 inch = 40 feet

SHEET TITLE

OPEN SPACE
PLAN



SHEET NO.

C-8.1

OPEN SPACE:
TOTAL LOT AREA = 409,796 S.F.
OPEN SPACE AREA PROVIDED = 154,730 S.F. (37.7%)

H:\PROJECTS\SUTTON\1126-SUTTON-100 WORC-PROV TURNPIKE\DWG\PERMIT\PLANNING BOARD\GREAT DANE_SP-R2.DWG

LUMINAIRE SCHEDULE				
QTY	LABEL	ARRANGEMENT	DESCRIPTION	TAG
3	P3	SINGLE	COOPER: GALN-SAZ4-740-U-SL3-CXX	MOUNTED ON 20' VALMONT POLE: D5330-4000220-D1-PP-COOPER CXX-FBC
5	P4A	SINGLE	COOPER: GALN-S43C-740-U-T4TF-CXX	MOUNTED ON 25' VALMONT POLE: D5330-4000250-D1-PP-COOPER CXX-FBC
3	P4B	SINGLE	COOPER: GALN-S42C-740-U-T4TF-CXX	MOUNTED ON 20' VALMONT POLE: D5330-4000220-D1-PP-COOPER CXX-FBC
3	P4W	SINGLE	COOPER: GALN-S42B-740-U-T4W-CXX	MOUNTED ON 20' VALMONT POLE: D5330-4000220-D1-PP-COOPER CXX-FBC
5	W1	SINGLE	MOLE: LED-426W-CXX	WALL INTO 20' AFG OVER MAN DOORS
2	W2	SINGLE	COOPER: CWS-S42B-740-U-SL3-CXX	WALL INTO 20' AFG
9	W4	SINGLE	COOPER: CWS-S42B-740-U-L4T1-CXX	WALL MID 20' AFG



P.O. Box 757 • Sutton, MA 01590
P:(508) 381-1515 F:(508) 647-0189
www.tpecvltdesign.com

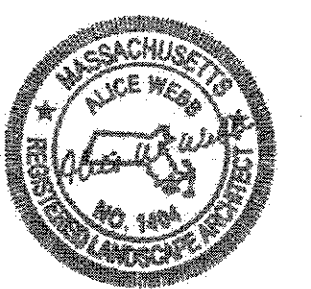
BEING A MAJORITY

APPROVAL DATE: _____
ENDORSEMENT DATE: 3/24/24

PROJECT NAME
NORTHEAST GREAT DANE
#100 WORCESTER—PROVIDENCE TURNPIKE
SUTTON, MASSACHUSETTS
SUTTON MOTOR-IN TRUST
ONE MERCANTILE STREET, SUITE 540
WORCESTER, MA 01608
PREPARED FOR

Eastland Partners, Inc.
997 Millbury Street
Worcester, MA 01607

Eastland

[illegible]

L.A.

SHEET TITLE

LANDSCAPE PLAN

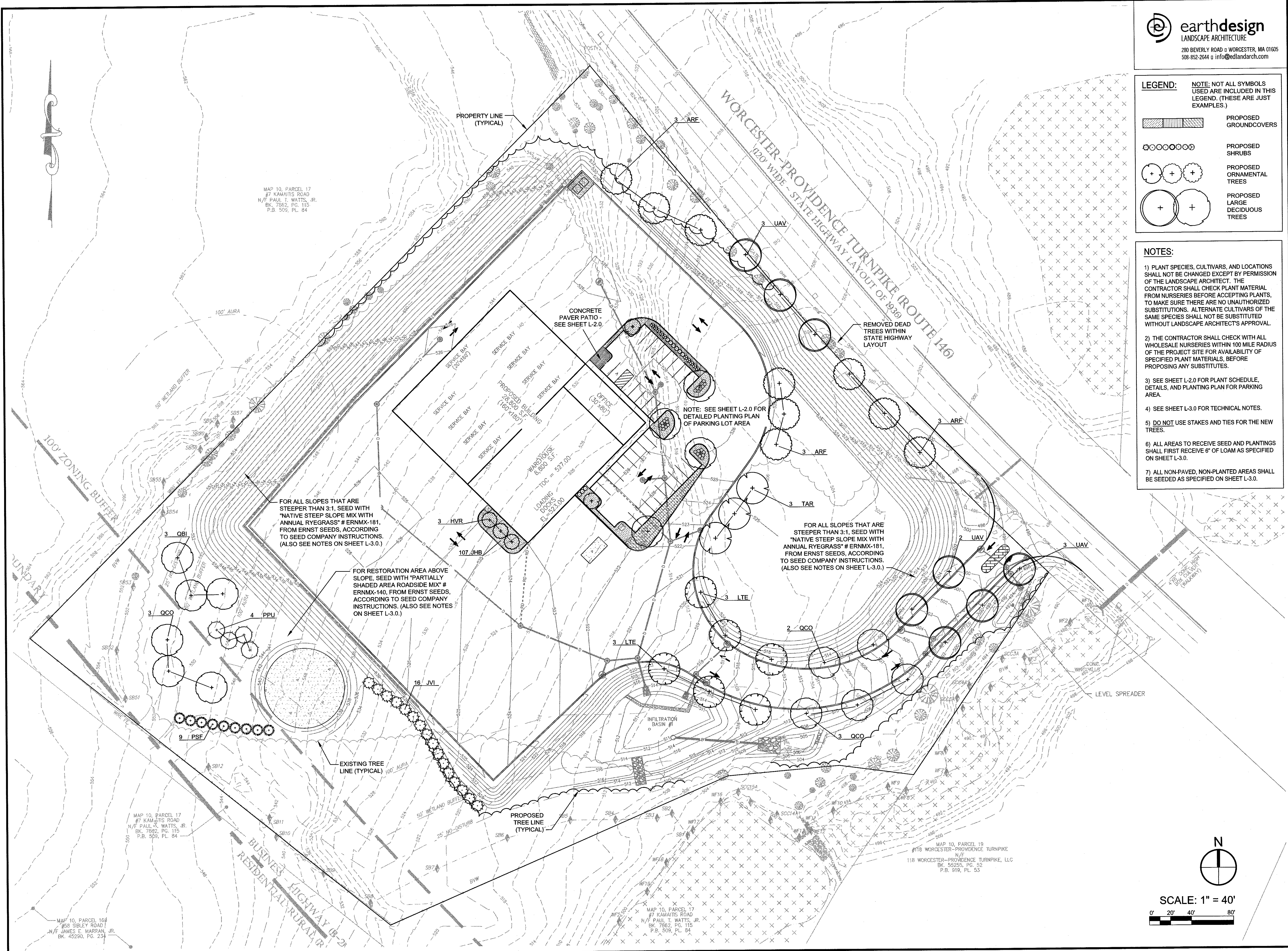
DRAWING ISSUED FOR:

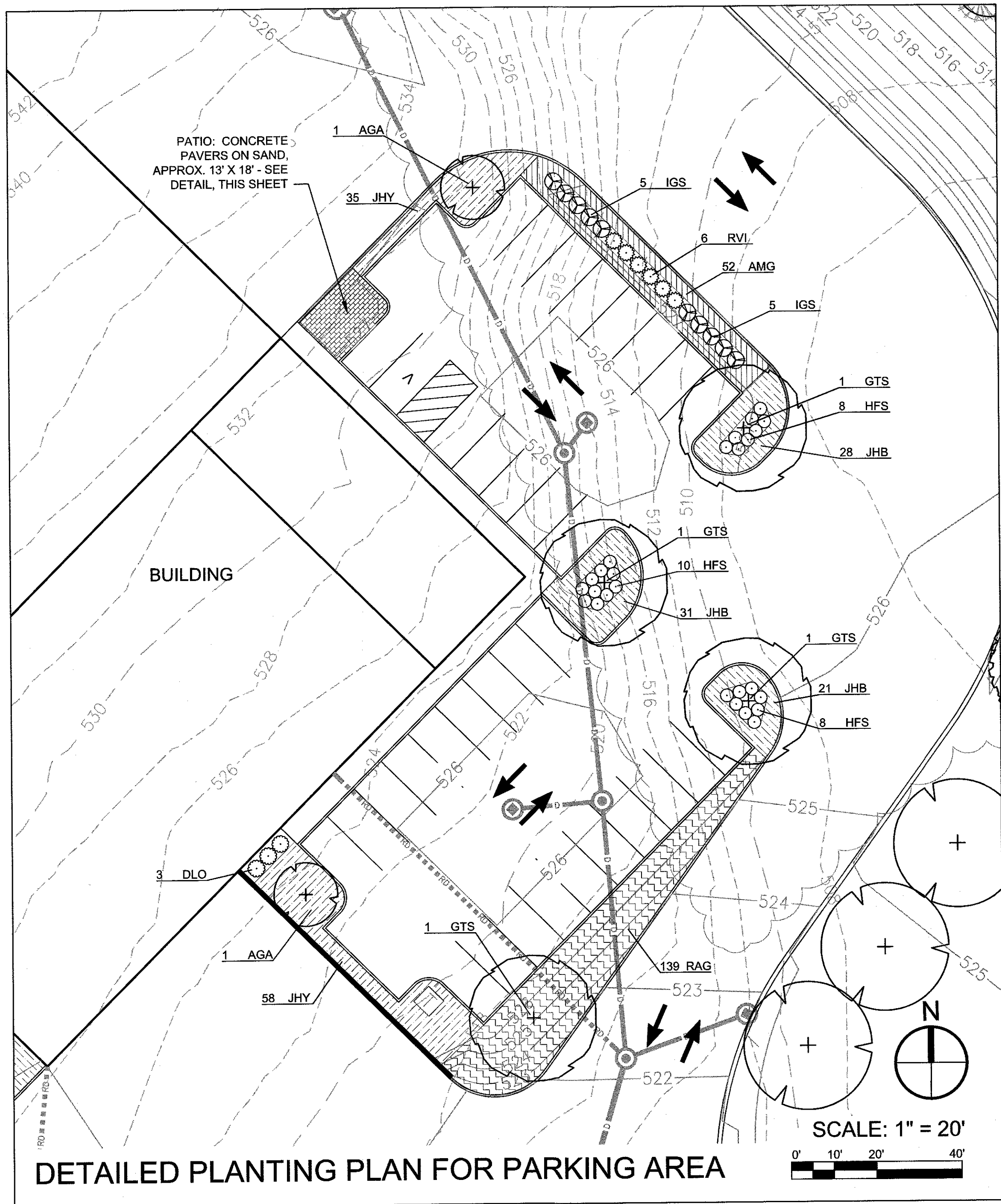
SHEET NO.

PERMIT

THIS PLAN IS INTENDED TO SHOW
CONSTRUCTIBILITY AND MAY NOT
SHOW ALL CONSTRUCTION DETAILS
AND SPECIFICATIONS FOR THE
SHOWN IMPROVEMENTS AND MAY
NOT IDENTIFY ALL CONSTRUCTION
ITEMS/AREAS OF CONTRACTOR
RESPONSIBILITY.

-1.0





PLANT SCHEDULE					
SYMBOL	QTY.	BOTANICAL NAME	COMMON NAME	MINIMUM SIZE AT PLANTING	PLANT SPACING & NOTES
LARGE SHADE TREES					
ARF	9	ACER RUBRUM 'FRANKSRED'	RED SUNSET MAPLE	2" CAL., 6' HT.	B&B, PLANT 50' ON CENTER ALONG RTE. 146 AND 30' ON CENTER ELSEWHERE
GTS	4	GLEDITZIA TRIACANTHOS F. INERMIS 'SKYLINE'	SKYLINE HONEYLOCUST	2" CAL., 6' HT.	B&B, PLANT WHERE SHOWN
LTE	6	LIRIODENDRON TULIPIFERA 'EMERALD CITY'	EMERALD CITY TULIP POPLAR	2" CAL., 6' HT.	B&B, PLANT 50' ON CENTER ALONG ENTRANCE DRIVE AND 30' ON CENTER ELSEWHERE
QBI	3	QUERCUS BICOLOR	SWAMP WHITE OAK	2" CAL., 6' HT.	B&B, PLANT 30' ON CENTER EXCEPT WHERE SHOWN FURTHER APART
QCO	8	QUERCUS COCCINEA	SCARLET OAK	2" CAL., 6' HT.	B&B, PLANT 50' ON CENTER ALONG ENTRANCE DRIVE, AND 30' ON CENTER ELSEWHERE EXCEPT WHERE SHOWN FURTHER APART
TAR	3	TILIA AMERICANA 'REDMOND'	REDMOND AMERICAN BASSWOOD	2" CAL., 6' HT.	B&B, PLANT 30' ON CENTER
UAV	8	ULMUS AMERICANA 'VALLEY FORGE'	VALLEY FORGE ELM	2" CAL., 6' HT.	B&B, PLANT 50' ON CENTER
LARGE EVERGREEN TREES & SHRUBS FOR SCREENING					
JVI	16	JUNIPERUS VIRGINIANA	EASTERN RED CEDAR	6' HEIGHT	PLANT 10' ON CENTER
PPU	4	PICEA GLAUCA	BLUE SPRUCE	8' HEIGHT	PLANT 15' ON CENTER
PSF	9	PINUS STROBUS 'FASTIGIATA'	UPRIGHT WHITE PINE	6' HEIGHT	PLANT 10' ON CENTER
SMALL ORNAMENTAL TREES					
AGA	2	AMELANCHIER X GRANDIFLORA 'AUTUMN BRILLIANCE'	AUTUMN BRILLIANCE SERVICEBERRY	6' HEIGHT	B&B, PLANT WHERE SHOWN
HVR	3	HAMAMELIS VIRGINIANA	AMERICAN WITCHHAZEL	6' HEIGHT	B&B, PLANT 15' ON CENTER
SHRUBS					
DLO	3	DIERVILLA LONICERA	NORTHERN BUSH HONEYSUCKLE	# 3 POT	PLANT 4' ON CENTER
HFS	26	HYPERICUM FRONDOSUM 'SUNBURST'	SUNBURST ST. JOHN'S WORT	# 3 POT	PLANT 3' ON CENTER; IF UNAVAILABLE, THIS MAY BE SUBSTITUTED WITH HYPERICUM KALMIANUM 'DEPPE' (SUNNY BOULEVARD ST. JOHN'S WORT)
IGS	10	ILEX GLABRA 'SHAMROCK'	SHAMROCK INKBERRY	# 3 POT	PLANT 4' ON CENTER
RVI	6	ROSA VIRGINIANA	VIRGINIA ROSE	# 3 POT	PLANT 4' ON CENTER
GROUNDCOVERS					
AMG	52	ARONIA MELANOCARPA 'GROUND HUG'	GROUND HUG CHOKEBERRY	# 3 POT	PLANT 3' ON CENTER
JHB	187	JUNIPERUS HORIZONTALIS 'BAR HARBOR'	BAR HARBOR JUNIPER	# 3 POT	PLANT 3' ON CENTER
JHY	93	JUNIPERUS HORIZONTALIS 'YOUNGSTOWN'	YOUNGSTOWN JUNIPER	# 3 POT	PLANT 3' ON CENTER
RAG	139	RHUS AROMATICA 'GRO-LOW'	GRO-LOW SUMAC	# 3 POT	PLANT 3' ON CENTER

NOTE: PLANT SPECIES, CULTIVARS, SIZES, AND LOCATIONS SHALL NOT BE CHANGED EXCEPT BY PERMISSION OF THE LANDSCAPE ARCHITECT. THE CONTRACTOR SHALL CHECK PLANT MATERIAL FROM NURSERIES BEFORE ACCEPTING PLANTS, TO MAKE SURE THERE ARE NO UNAUTHORIZED SUBSTITUTIONS. ALTERNATE CULTIVARS OF THE SAME SPECIES SHALL NOT BE SUBSTITUTED WITHOUT LANDSCAPE ARCHITECT'S APPROVAL. THE CONTRACTOR SHALL CHECK WITH ALL WHOLESALE NURSERIES WITHIN 100 MILE RADIUS OF THE PROJECT SITE FOR AVAILABILITY OF SPECIFIED PLANT MATERIALS, BEFORE PROPOSING ANY SUBSTITUTES.

** EXCEPT AS NOTED UNDER "PLANT SPACING & NOTES" IN THE PLANT SCHEDULE, BUT THOSE SUBSTITUTIONS MAY ONLY BE USED IF THE SPECIFIED PLANT IS NOT AVAILABLE AT ANY WHOLESALE NURSERIES IN THE REGION, AS NOTED ABOVE.

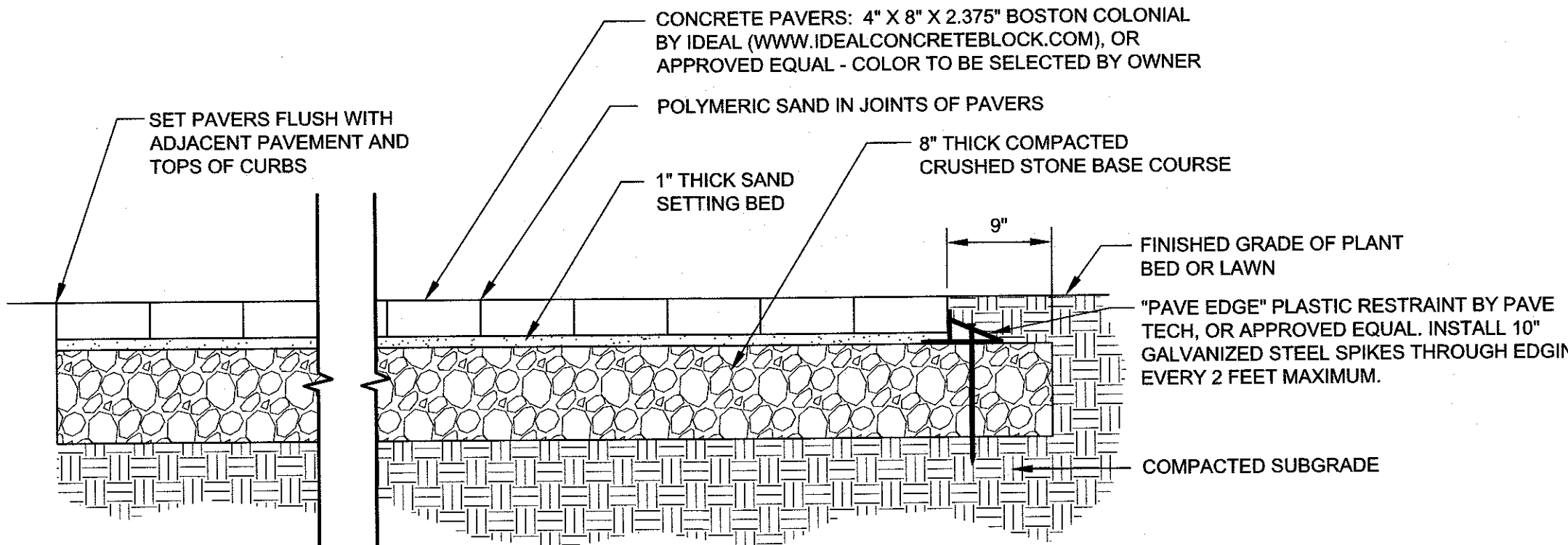


LEGEND:

NOTES: NOT ALL SYMBOLS USED ARE INCLUDED IN THIS LEGEND. (THESE ARE JUST EXAMPLES.)

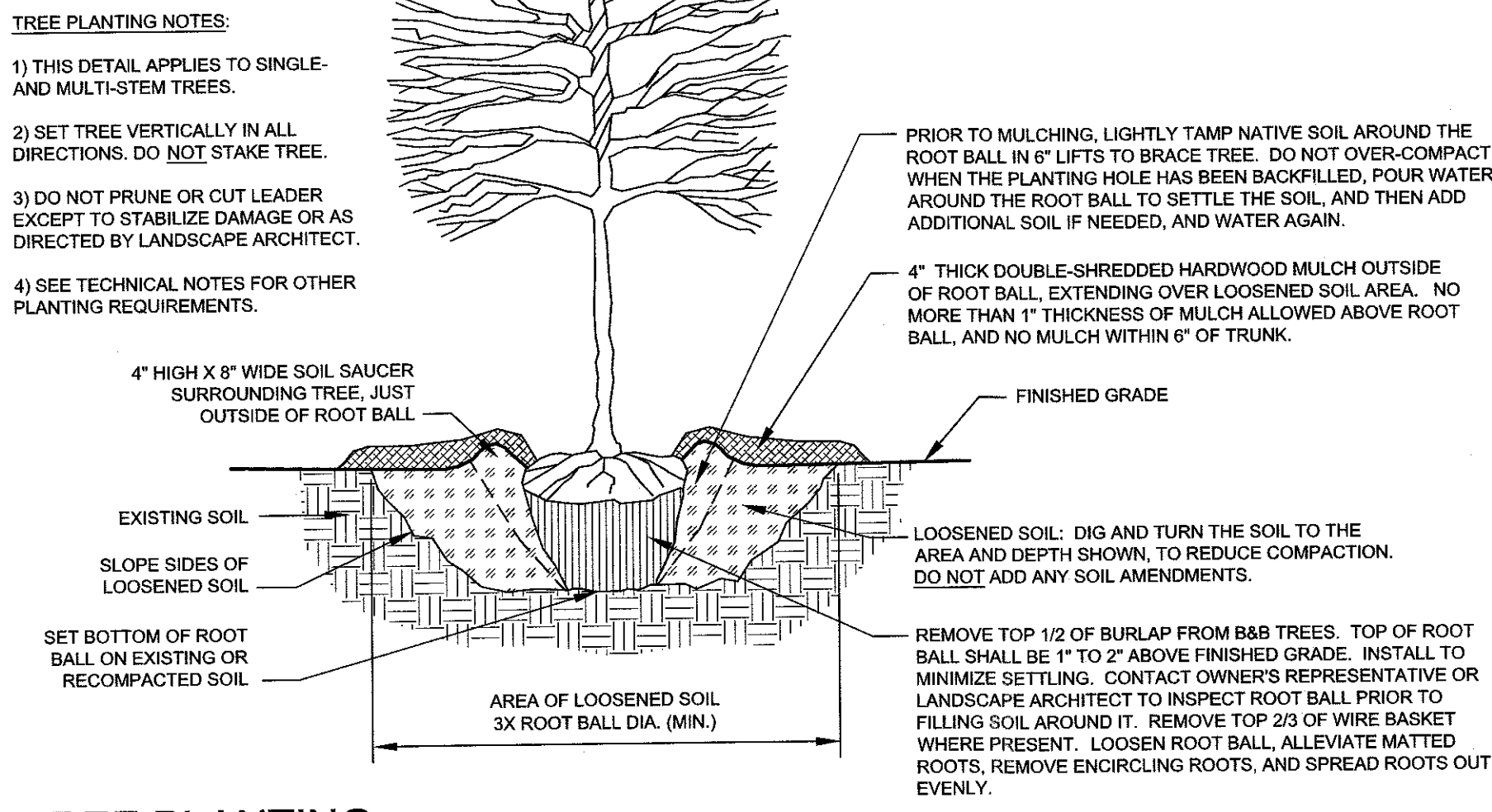
- PROPOSED GROUNDCOVERS
- PROPOSED SHRUBS
- PROPOSED ORNAMENTAL TREES
- PROPOSED LARGE DECIDUOUS TREES

- NOTES:**
- 1) PLANT SPECIES, CULTIVARS, AND LOCATIONS SHALL NOT BE CHANGED EXCEPT BY PERMISSION OF THE LANDSCAPE ARCHITECT. THE CONTRACTOR SHALL CHECK PLANT MATERIAL FROM NURSERIES BEFORE ACCEPTING PLANTS, TO MAKE SURE THERE ARE NO UNAUTHORIZED SUBSTITUTIONS. ALTERNATE CULTIVARS OF THE SAME SPECIES SHALL NOT BE SUBSTITUTED WITHOUT LANDSCAPE ARCHITECT'S APPROVAL.
 - 2) THE CONTRACTOR SHALL CHECK WITH ALL WHOLESALE NURSERIES WITHIN 100 MILE RADIUS OF THE PROJECT SITE FOR AVAILABILITY OF SPECIFIED PLANT MATERIALS, BEFORE PROPOSING ANY SUBSTITUTES.
 - 3) SEE SHEET L-1.0 FOR PLANTING PLAN FOR THE REST OF THE SITE.
 - 4) SEE SHEET L-3.0 FOR TECHNICAL NOTES.
 - 5) DO NOT USE STAKES AND TIES FOR THE NEW TREES.
 - 6) ALL AREAS TO RECEIVE SEED AND PLANTINGS SHALL FIRST RECEIVE 6" OF LOAM AS SPECIFIED ON SHEET L-3.0.
 - 7) ALL NON-PAVED, NON-PLANTED AREAS SHALL BE SEEDDED AS SPECIFIED ON SHEET L-3.0.



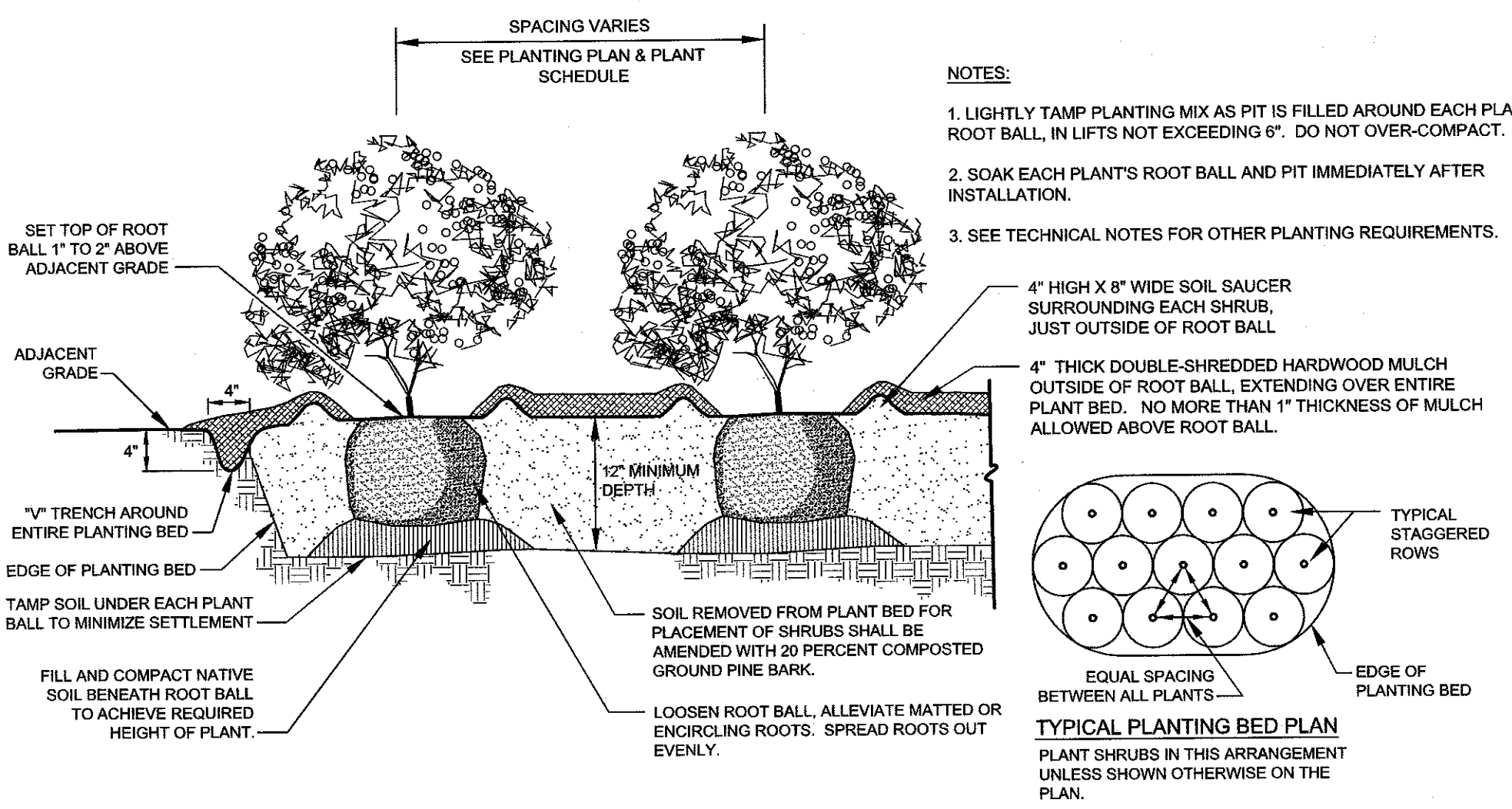
CONCRETE PAVER SURFACING

NOT TO SCALE



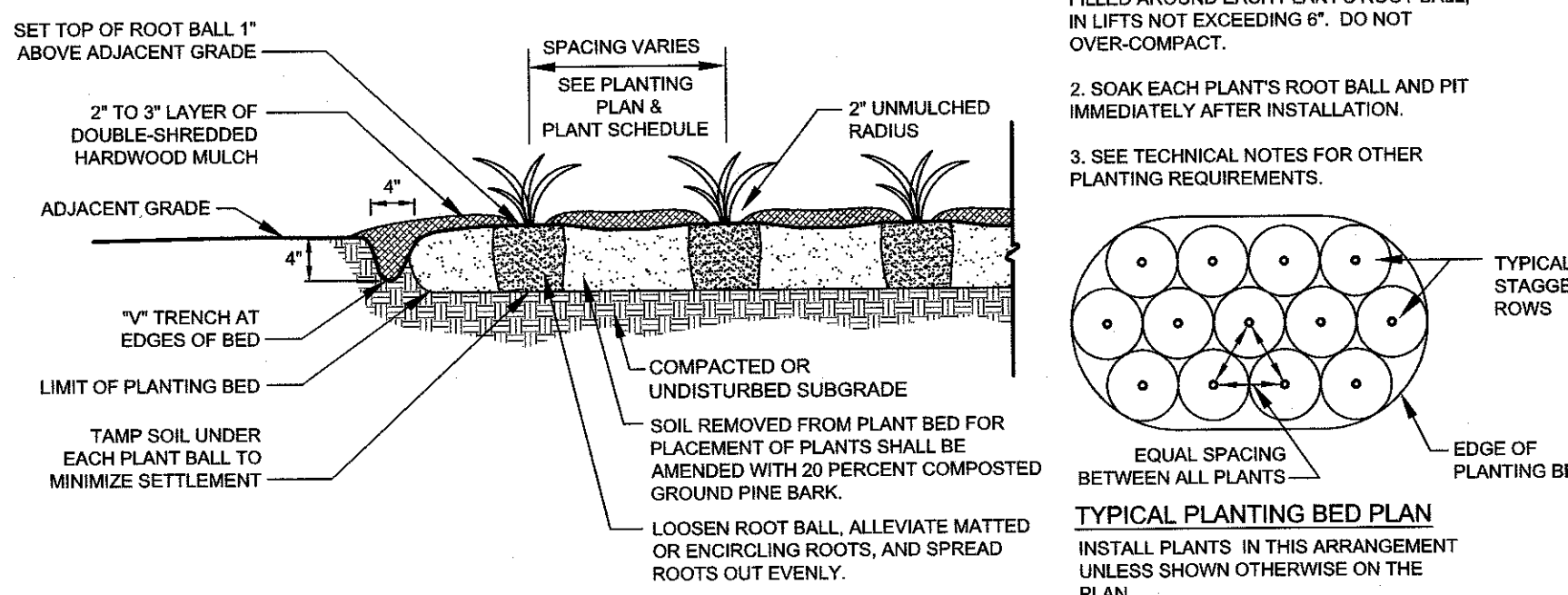
TREE PLANTING

NOT TO SCALE



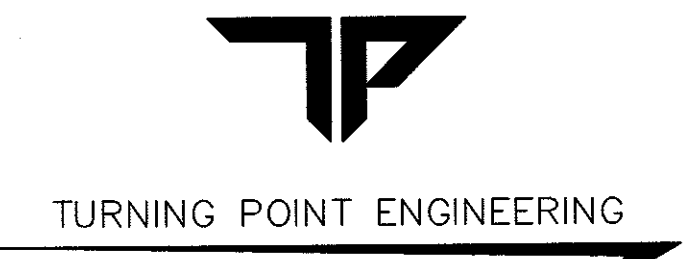
SHRUB PLANTING

NOT TO SCALE



GROUNDCOVER & PERENNIAL PLANTING

NOT TO SCALE



CIVIL SITE DESIGN

APPROVAL UNDER SITE PLAN REVIEW, SUTTON PLANNING BOARD

BENJ A. MAJORITY

APPROVAL DATE: 3/24/24

ENDORSEMENT DATE: 3/24/24

PROJECT NAME: NORTHEAST GREAT DANE

#100 WORCESTER-PROVIDENCE TURNPIKE

SUTTON, MASSACHUSETTS

SUTTON MOTOR-IN TRUST

ONE MERCANTILE STREET, SUITE 540

WORCESTER, MA 01608

PREPARED FOR: Eastland Partners, Inc. 997 Military Street Worcester, MA 01607

REV.	DATE	DESCRIPTION
1	1/29/24	NO REVISIONS THIS SHEET
2	2/29/24	PLANTING REV & PATIO ADDITION

PROJECT NO. TPE-1126

DESIGNED BY AWW

CHECKED BY AWW

DATE DECEMBER 1, 2023

CAD FILE H:\GREAT DANE_SP.dwg

PLAN NO. L-

MASSACHUSETTS SEAL

L.A.

SHEET TITLE: LANDSCAPE SCHEDULE & DETAILS

DRAWING ISSUED FOR: PERMIT

SHEET NO. L-2.0

THIS PLAN IS INTENDED TO SHOW CONSTRUCTION AND MAY NOT SHOW ALL CONSTRUCTION DETAILS AND SPECIFICATIONS FOR THE SHOW IMPROVEMENTS AND MAY NOT IDENTIFY ALL CONSTRUCTION ITEMS/AREAS OF CONTRACTOR JURISDICTION.

