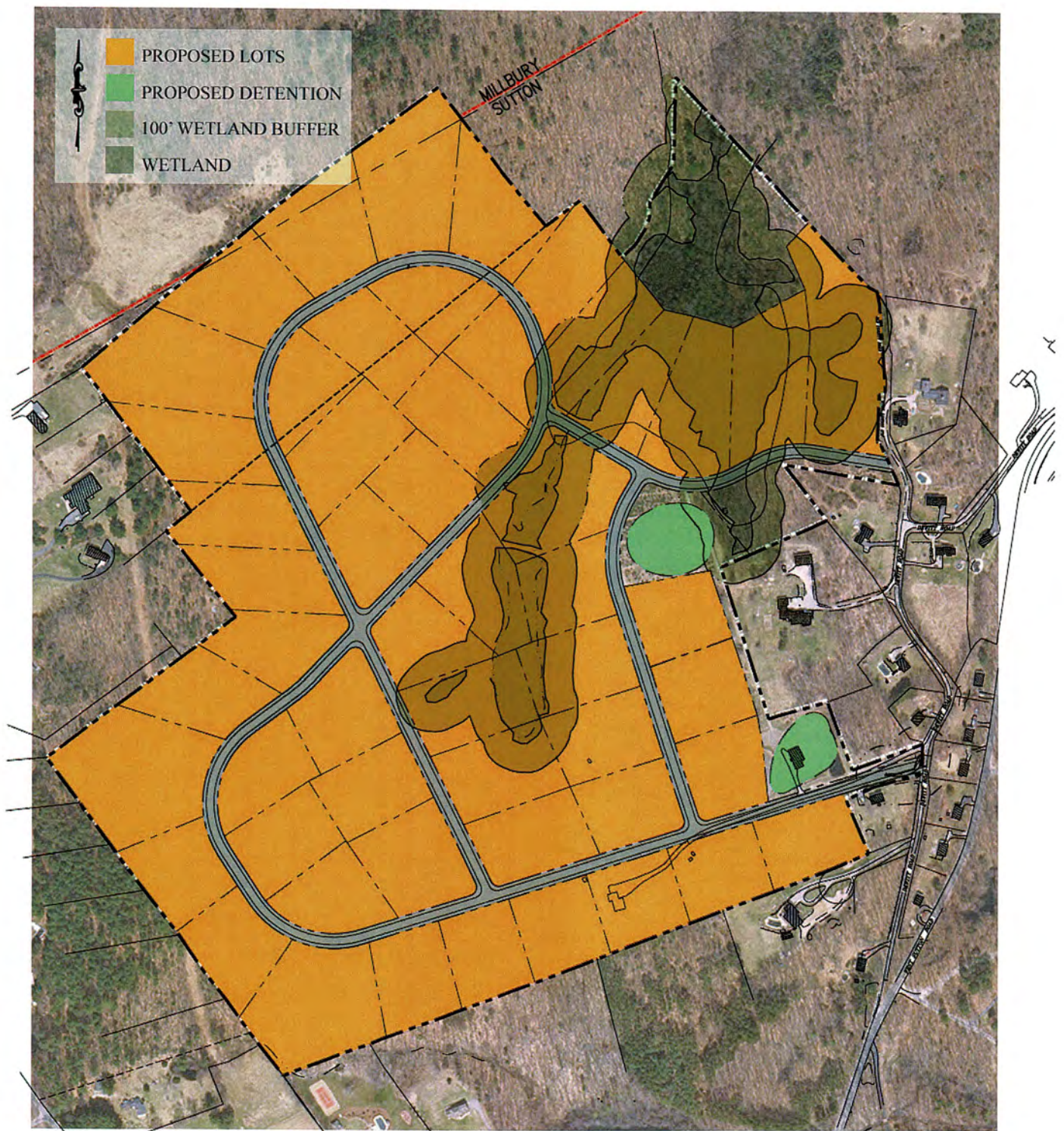


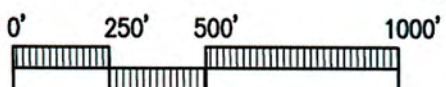
## **Dewitt Road Open Space Subdivision**

### **Information from July 2007 Draft Environmental Impact Report (EIR)**

- 149 acres available at the time
- 14 acres of wetlands + 20 acres of wetland buffer area
- Approximately 1/3 of the land is identified as Prime Farmland Soils (State designation)
- Site potentially hosts 4 endangered or threatened species (Natural Heritage Endangered Species Program)
- Standard Subdivision – 54 lots altering 142 of 149 acres
- Open Space Subdivision (preferred per EIR) – 59 lots altering 56 acres
- Private water would be utilized withdrawing approximately 25,000 gallon per day (gpd)
- Intent is to hook into Millbury Sewer System reducing Town allotment by the same 25,000 gpd, but also shifting this withdrawal out of this sub-basin
- Traffic impact - 643 trips per day



Total Proposed Lots: 54



Stantec Consulting Ltd.

Site Planning  
Civil Engineering  
Landscape Architecture

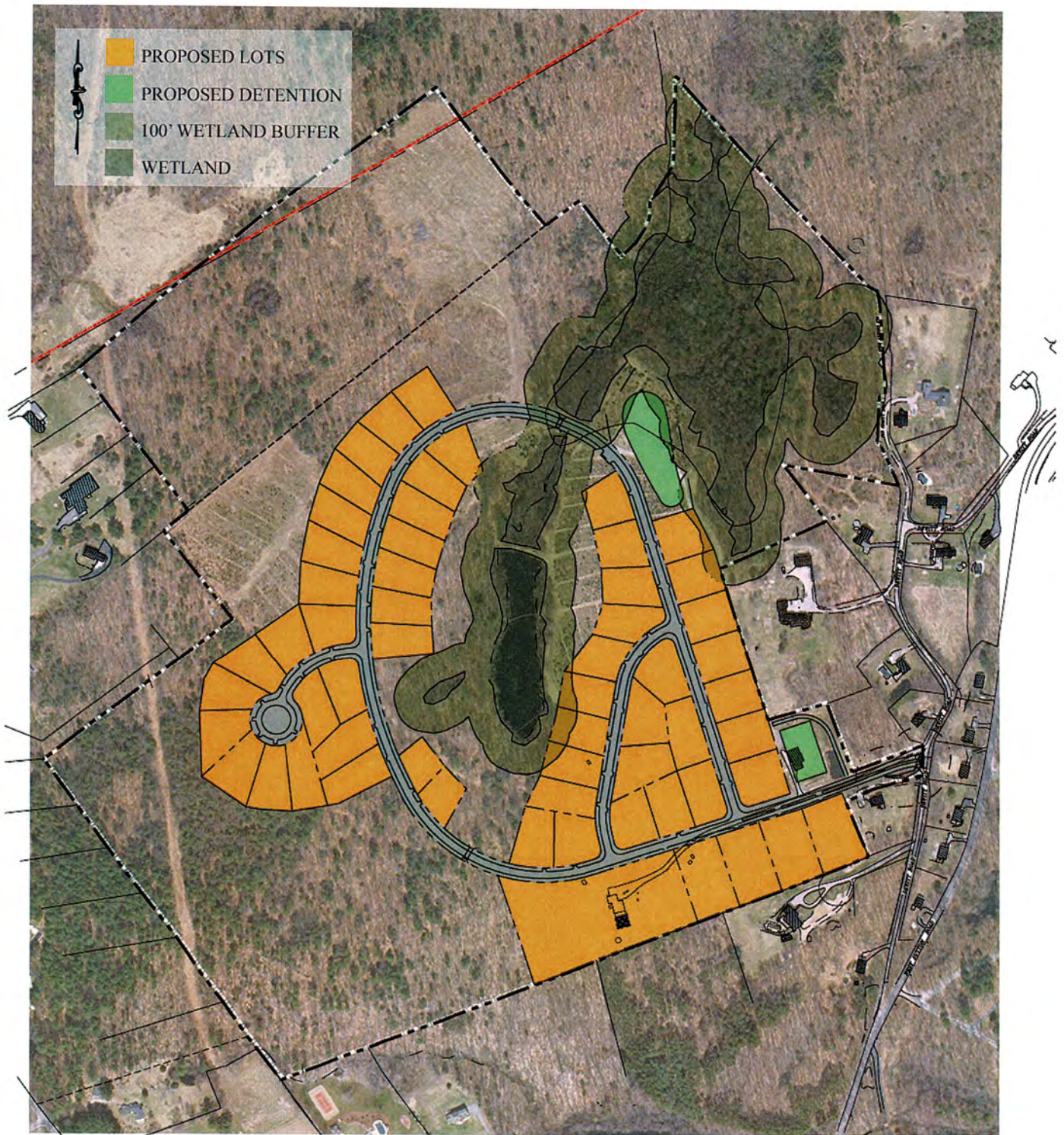
**Stantec**

70 Walnut Street  
Wellesley, MA 02139

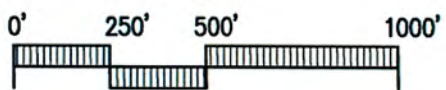
SUTTON RESIDENTIAL OPEN SPACE DEVELOPMENT

FIG 2-3: Yield Plan Alternative





Total Proposed Lots: 58



Stantec Consulting Ltd.

Site Planning  
Civil Engineering  
Landscape Architecture

**Stantec** 70 Walnut Street  
Wellesley, MA 02139

SUTTON RESIDENTIAL OPEN SPACE DEVELOPMENT

FIG 2-1: Preferred Alternative