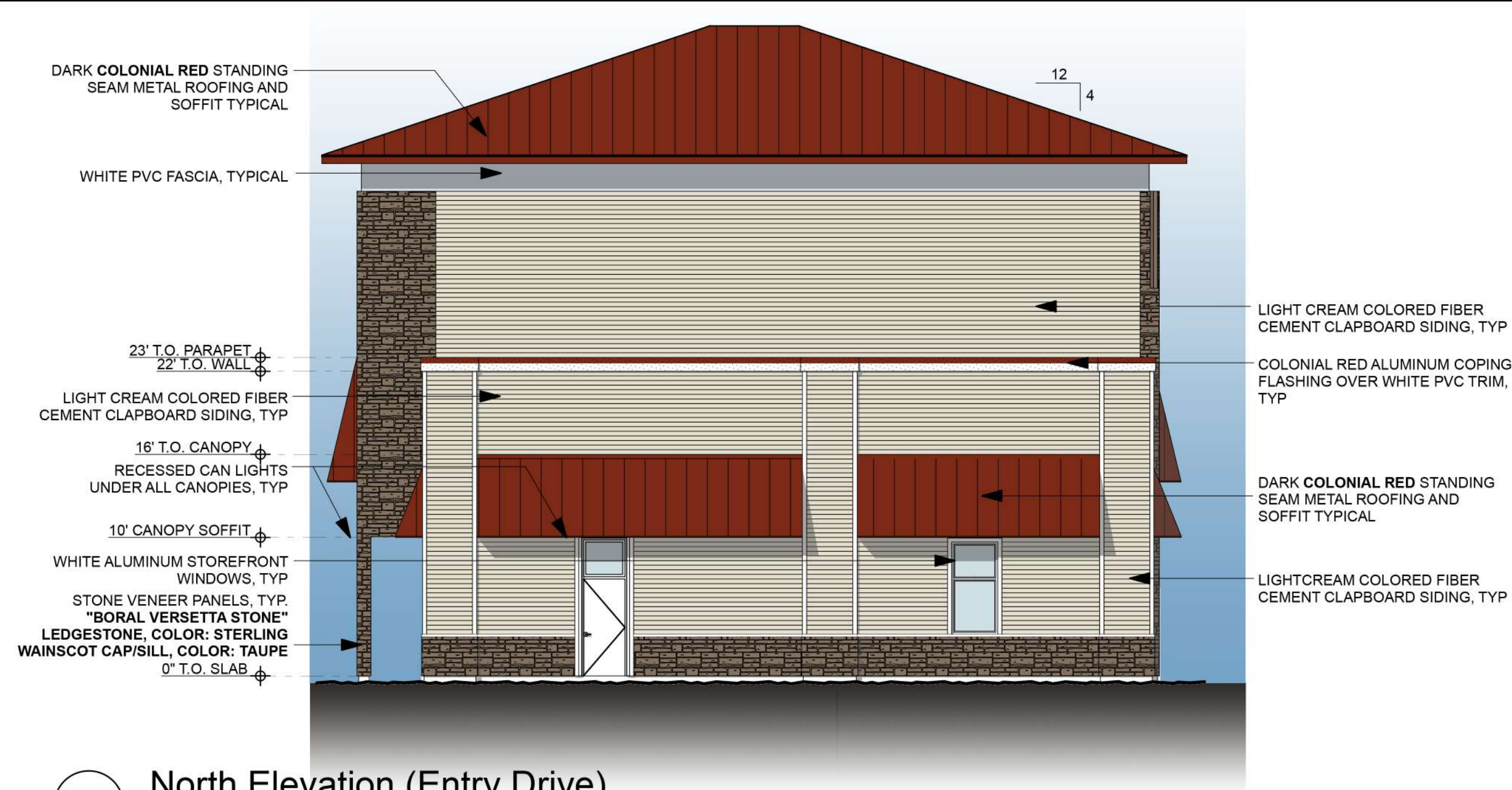


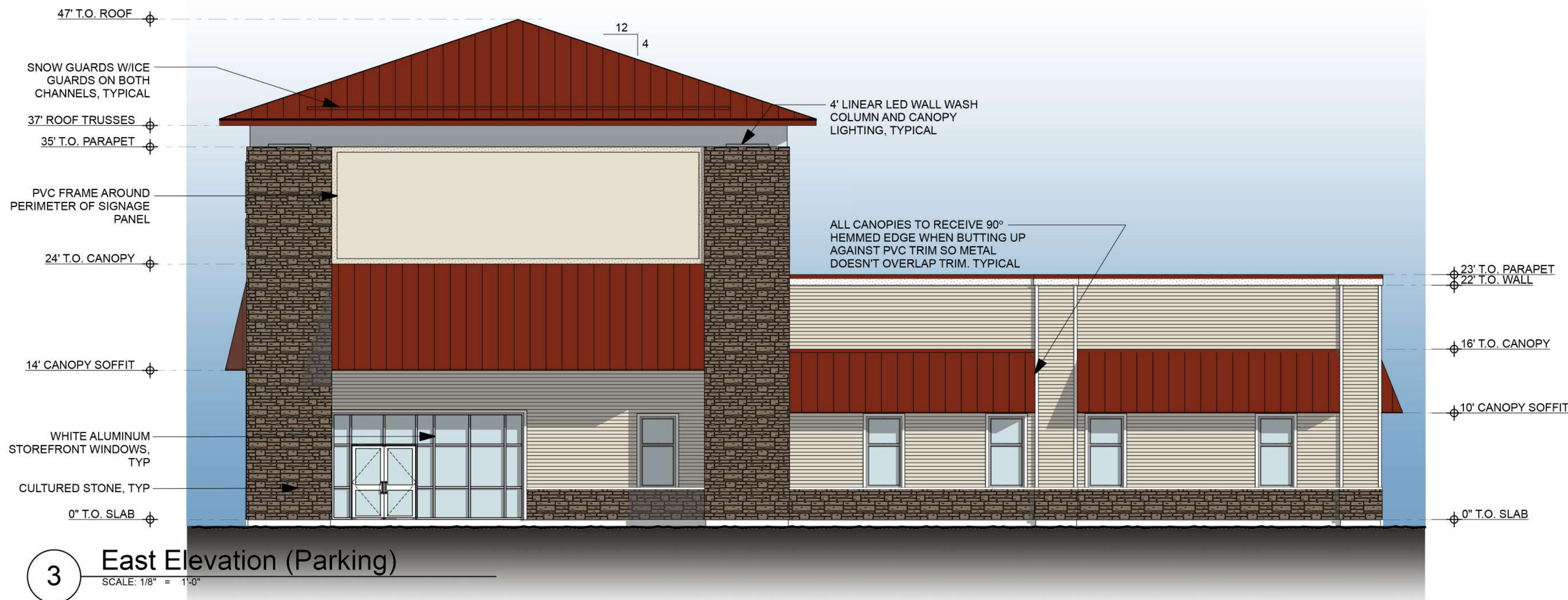
N:\Volumes\Correia Backups\KCA\Active Projects\ConvenientMD Urgent Care\CMD SuttonMA - 20220606\Arch\cad\20220606 Convenient MD SuttonMA Interior V24.rvt Wednesday, May 6, 2021



1 South Elevation (Route 146)  
SCALE: 1/8" = 1'-0"



2 North Elevation (Entry Drive)  
SCALE: 1/8" = 1'-0"



3 East Elevation (Parking)  
SCALE: 1/8" = 1'-0"



4 West Elevation (Pleasant Valley Road)  
SCALE: 1/8" = 1'-0"

**CONVENIENTMD EXTERIOR FINISH NOTES:**

**Pitched Roofs & Canopies:** Standing Seam Metal Roofing, Pac-Clad "Snap Clad" or approved equal. Color: **Colonial Red**

**Membrane Roof:** Fully Adhered White .060 TPO Membrane on coverboard over R30 min polyiso rigid insulation.

**Eave & Canopy Soffits:** Pac Clad Aluminum Flush Soffit Panels or approved equal. Upper tower soffit color to match roof color. Lower canopy soffit to be white pvc beadboard, AZEK or approved equal.

**Exterior Clapboard Siding:** Pre-Finished James Hardie clapboard siding, 4" exposure. Color: Navajo Beige

**Exterior Trim:** 5/4 PVC, Azek or architect approved equal. Color white

**Stone Veneer:** Stone Veneer Panels "Boral Versetta Stone" Color/style to be confirmed with architect.

**Aluminum Storefront:** All Aluminum Storefront doors/windows shall be Kawneer 451T Thermally Broken aluminum storefront system or approved equal.


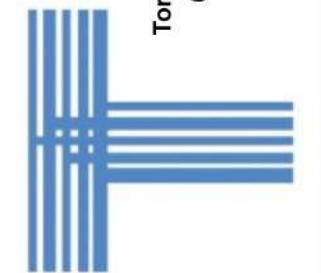
Two sets of glass exterior double doors with thermally broken aluminum frames with two ADA automatic door openers. Color to be white

**Rear Exit Door:** Insulated Hollow Metal rear door with ADA push exit hardware, electric strike & FOB access control system.

**Envelope Insulation:**  
-Low slope roof to be R30 min continuous between exterior insulated walls, ensuring continuity of all envelope insulation.  
-Exterior Walls to be R26 (4") min Closed cell spray in place polyurethane insulation in stud cavity  
-2" min rigid insulation from top of foundation footing to top of slab elevation on outside face of foundation wall, Reinforced Stucco finish over exposed foundation insulation.

**Exterior Lighting:**  
Provide & Install recessed LED lighting fixtures in all canopies, overhangs at canopies/overhangs  
Provide & Install Round recessed LED down lights around perimeter of upper & lower canopy/roof overhangs  
Provide additional Linear LED wall wash down lights to graze down corner columns of tower.  
Provide LED Wall pack lighting at rear doors  
Provide Linear LED lighting above tower canopies per electrical drawings.

PRELIMINARY ONLY

ARCHITECT:
 KEVIN CORREIA ARCHITECTURE KEVIN CORREIA ARCHITECTURE LLC 52 NASHUA STREET, SUITE 30 MILFORD, NH 03055 kcorreia@kcorreia.com   603-255-3075
<small>The material contained in these drawings and the design they are intended to convey are the exclusive property of Kevin Correia Architecture LLC. Possession and use hereof is granted only confidentially in connection with construction and/or sale of the structure depicted herein as authorized by him, and the recipient agrees to abide by these restrictions. Any use, reproduction or disclosure of any information, in whole or in part, contained herein, without written permission of Kevin Correia Architecture LLC, is expressly prohibited.</small>
ENGINEER:
CLIENT:
 Torrington Properties, Inc. 60 K Street, Suite 302 Boston, MA 02127 857-264-1210
PROJECT:
ConvenientMD 15 Pleasant Valley Rd. Sutton, MA 01590
SEAL:
Elevations
ISSUE FOR: Progress
ISSUE DATE: 6/8/22
REVISIONS:
A201
PROJECT #: 2022-006