

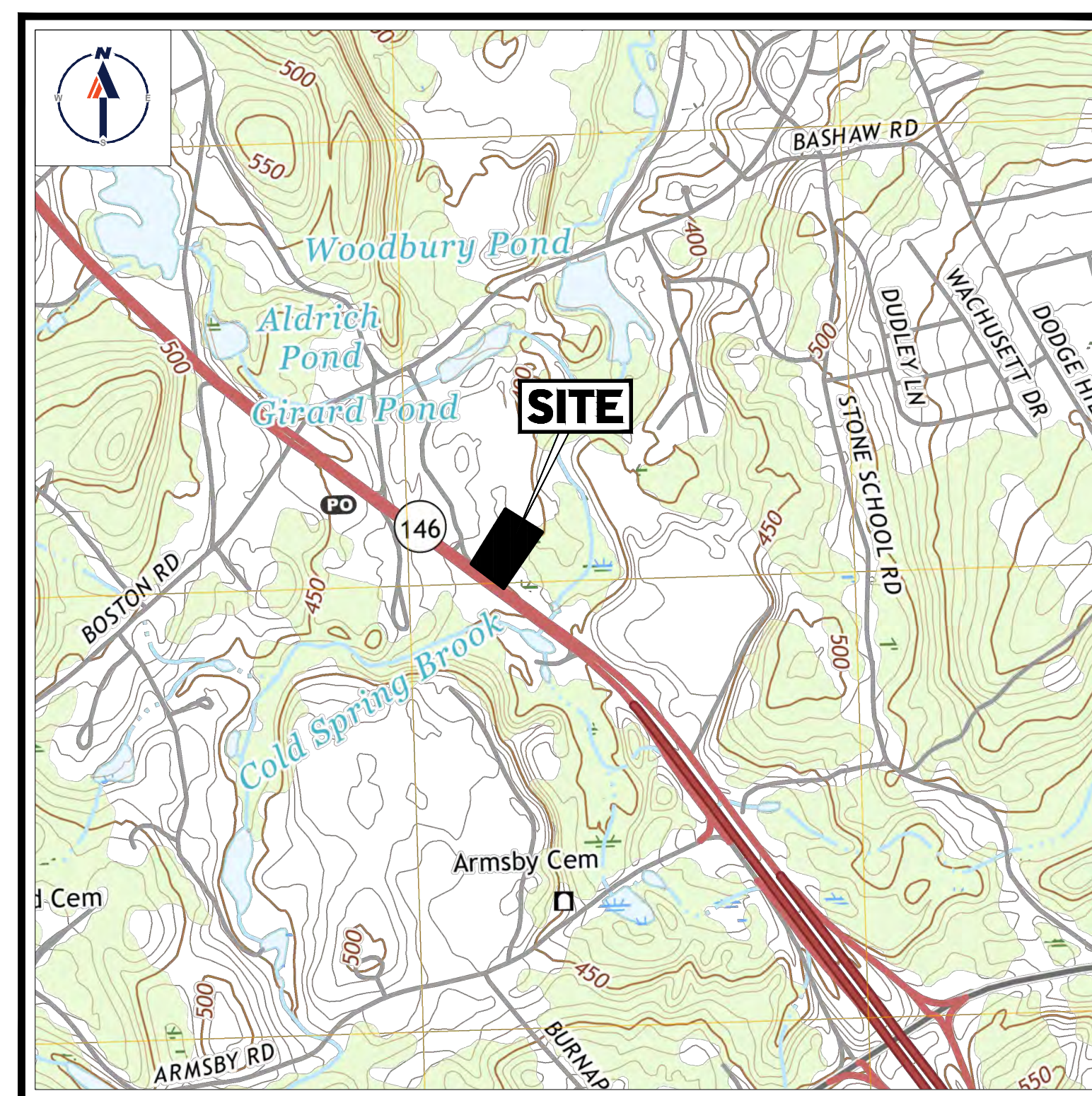
FOR

TORRINGTON PROPERTIES INC.

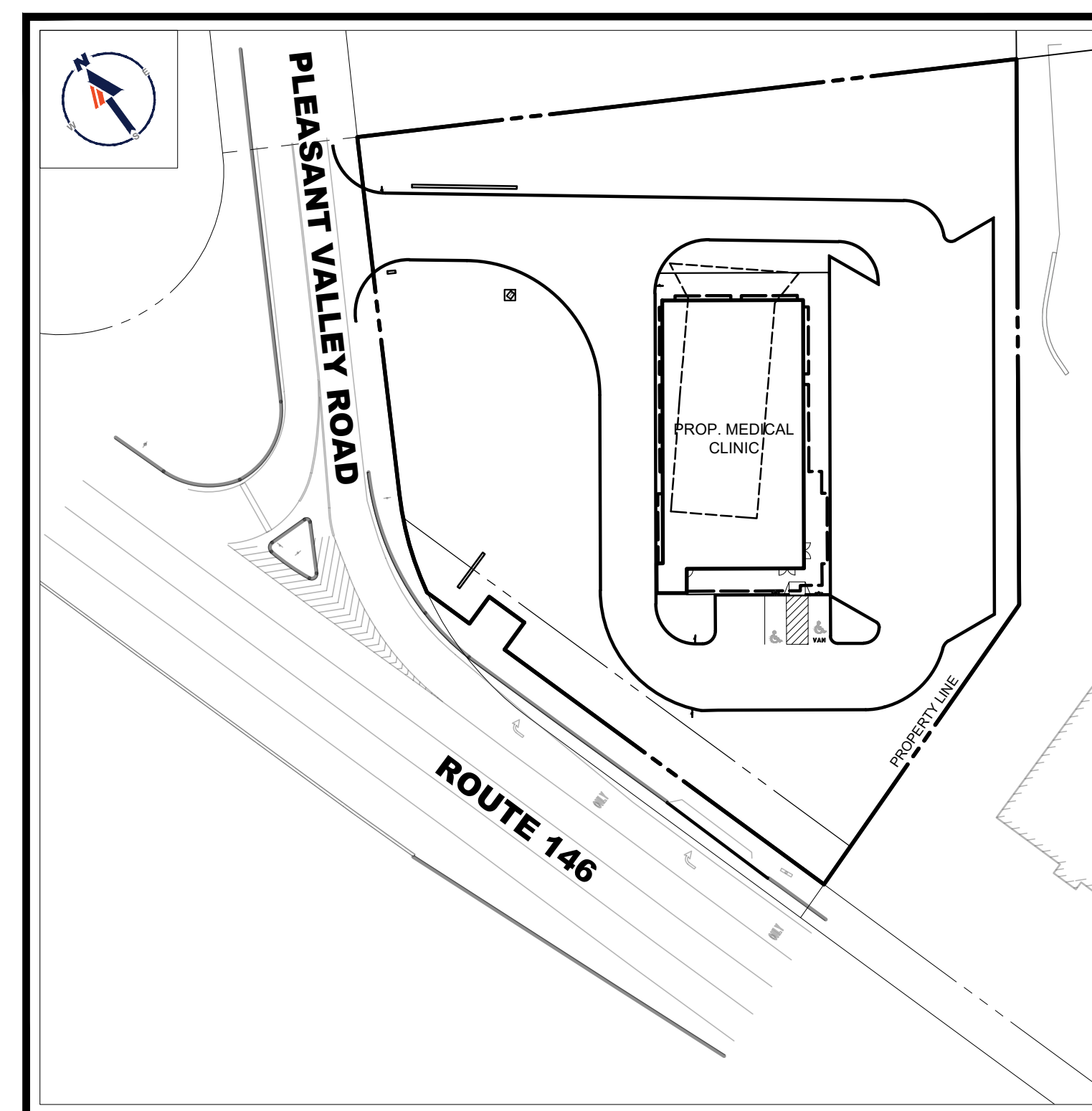
PROPOSED

MEDICAL CLINIC DEVELOPMENT

SCALE: 1" = 500'
SOURCE: TOWN OF SUTTON ASSESSOR'S MAP



SCALE: 1" = 1,000'
SOURCE: USGS GRAFTON
QUADRANGLE



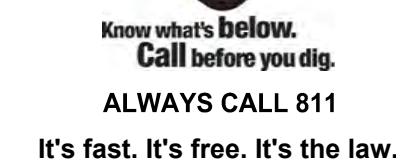
SCALE: 1" = 100'
SOURCE: MODEL

BOHLER//

SHEET TITLE	SHEET NUMBER
COVER SHEET	C-101
GENERAL NOTES SHEET	C-102
DEMOLITION PLAN	C-201
SITE LAYOUT PLAN	C-301
GRADING PLAN	C-401
DRAINAGE & UTILITY PLAN	C-501
EROSION AND SEDIMENT CONTROL PLAN	C-601
EROSION AND SEDIMENT CONTROL NOTES & DETAILS	C-602
LANDSCAPE PLAN	C-701
LANDSCAPE NOTES & DETAILS	C-702
LIGHTING PLAN	C-703
DETAIL SHEET	C-801
DETAIL SHEET	C-802
DETAIL SHEET	C-803
DETAIL SHEET	C-804

TOWN OF SUTTON BOARD APPROVAL APPROVED BY THE PLANNING BOARD OF THE TOWN OF SUTTON, MA.	
PLANNING BOARD CHAIR	DATE
PLANNING BOARD MEMBER	DATE
PLANNING BOARD MEMBER	DATE
PLANNING BOARD MEMBER	DATE
PLANNING BOARD MEMBER	DATE

SIGNATURE	DATE
-----------	------

[illegible]

THIS DRAWING IS INTENDED FOR MUNICIPAL AND/OR AGENCY
REVIEW AND APPROVAL. IT IS NOT INTENDED AS A CONSTRUCTION
DOCUMENT UNLESS INDICATED OTHERWISE.

PROJECT No.:	W221017-SPDP
DRAWN BY:	
CHECKED BY:	
DATE:	10/27/2010
CAD I.D.:	W221017-SPDP

PROJECT:

— FOR —

**PROPOSED
DEVELOPMENT**

MAP: #10 LOT: #93
15 PLEASANT VALLEY ROAD,
TOWN OF SUTTON ,
WORCESTER COUNTY,
MASSACHUSETTS

BOHLER//

352 TURNPIKE ROAD
SOUTHBOROUGH, MA 01772
Phone: (508) 480-9900

www.BohlerEngineering.com

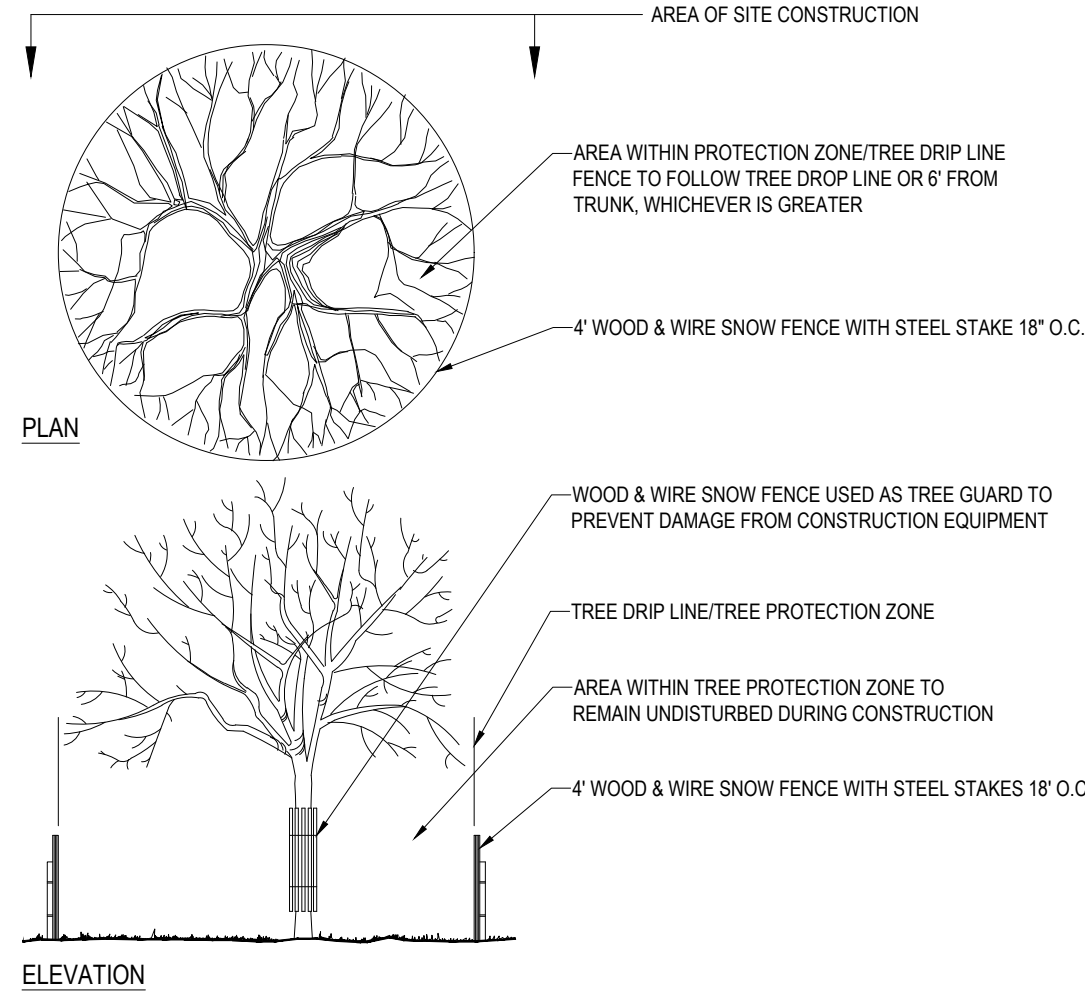
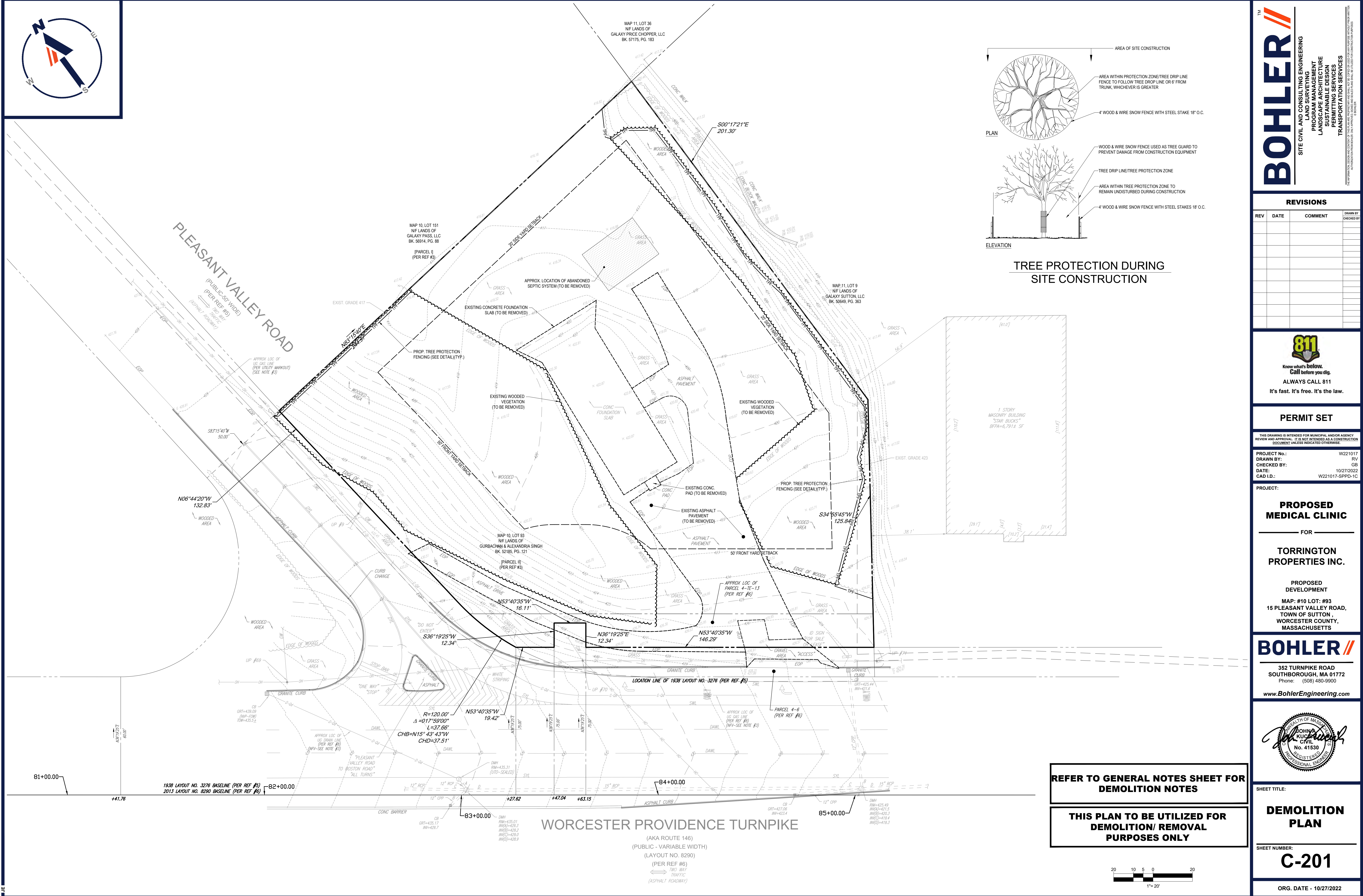


SHEET TITLE:

SHEET NUMBER:

C-101

ORG. DATE - 10/27/2022



TREE PROTECTION DURING
SITE CONSTRUCTION

BOHLER

SITE CIVIL AND CONSULTING ENGINEERING

PROGRAM MANAGEMENT

LANDSCAPE ARCHITECTURE

SUSTAINABLE DESIGN

PERMITTING SERVICES

TRANSPORTATION SERVICES

REVISIONS				
REV	DATE	COMMENT	DRAWN BY / CHECKED BY	

811

Know what's below.
Call before you dig.
ALWAYS CALL 811
It's fast. It's free. It's the law.

PERMIT SET

THIS DRAWING IS INTENDED FOR MUNICIPAL AND/OR AGENCY REVIEW AND APPROVAL. IT IS NOT INTENDED AS A CONSTRUCTION DOCUMENT UNLESS INDICATED OTHERWISE.

PROJECT No.: W221017

DRAWN BY: RV

CHECKED BY: GB

DATE: 10/27/2022

CAD ID: W221017-SPPD-1C

PROJECT:

PROPOSED
MEDICAL CLINIC

FOR

TORRINGTON
PROPERTIES INC.

PROPOSED
DEVELOPMENT

MAT: #10 LOT: #93
15 PLEASANT VALLEY ROAD,
TOWN OF SUTTON,
WORCESTER COUNTY,
MASSACHUSETTS

BOHLER

352 TURNPIKE ROAD
SOUTHBOROUGH, MA 01772
Phone: (508) 480-9900
www.BohlerEngineering.com

SHEET TITLE:

DEMOLITION
PLAN

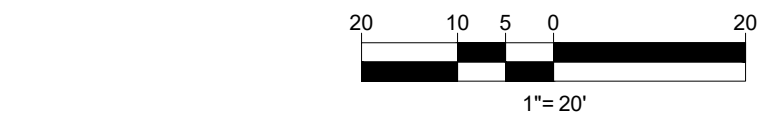
SHEET NUMBER:

C-201

ORG. DATE - 10/27/2022

REFER TO GENERAL NOTES SHEET FOR
DEMOLITION NOTES

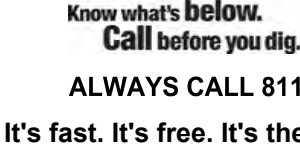
THIS PLAN TO BE UTILIZED FOR
DEMOLITION/ REMOVAL
PURPOSES ONLY



1. **APPLICANT:**
TORRINGTON PROPERTIES, INC
60 K STREET, SUITE 302
BOSTON, MA 02127
2. **OWNER:**
TORRINGTON PROPERTIES, INC
60 K STREET, SUITE 302
BOSTON, MA 02127
3. **PARCEL:**
MAP 10 BLOCK 93
15 PLEASANT VALLEY ROAD
WORCESTER, MASSACHUSETTS

PARKING SETBACKS			
ZONE CRITERIA	REQUIRED	EXISTING	PROPOSED
MIN. FRONT SETBACK	50 FEET	90.2 FEET	20 FEET (WV2)
MIN. SIDE SETBACK	20 FEET	77.1 FEET	5.2 FEET (WV2)

OPEN SPACE SHALL NOT INCLUDE LAND UNDER RIGHT-OF-WAYS FOR UTILITIES AND REQUIRED YARD SETBACK AREAS
 -A WALKER WILL BE REQUESTED FROM SECTION IV.B(1.A) TO ALLOW FOR PROPOSED PARKING & MANEUVERING AREAS TO BE LOCATED WITHIN THE YARD SETBACKS
 -A WALKER WILL BE REQUESTED FROM SECTION V.D(4)(A) FOR DISTURBANCE TO OCCUR ON EXISTING SLOPES 15% OR GREATER.
 -A WALKER WILL BE REQUESTED FROM SECTION V.D(4)(B) FOR REQUIRED OPEN SPACE WITHIN WALKING AREAS
 -A WALKER WILL BE REQUESTED FROM SECTION V.D(4)(C.1) FOR REQUIRED PEDESTRIAN PATH PATHS LINKING MAJOR BUILDINGS TO OPEN SPACE.
 -A WALKER WILL BE REQUESTED FROM SECTION V.D(4)(C.1) FOR REQUIRED COMMON GATHERING AREA.
 -A WALKER WILL BE REQUESTED FROM SECTION V.D(4)(C.2) FOR REQUIRED SHELTERS FOR PUBLIC TRANSIT
 -A WALKER WILL BE REQUESTED FROM SECTION IV.B(5.2) FOR REQUIRED TREES ALONG THE VEGETATED BUFFER FROM A PUBLIC STREET
 -A WALKER WILL BE REQUESTED FROM SECTION IV.B(5.1) FOR THE REQUIRED TEN FOOT WIDE BUFFER FROM ADJACENT CONTIGUOUS PROPERTIES
 -A WALKER WILL BE REQUESTED FROM SECTION IV.B(5.C.3) FOR INTERIOR LANDSCAPE AREAS TO BE DISPERSED SO AS TO DEFINE AREAS AND LIMIT UNBROKEN ROWS OF PARKING TO A MAXIMUM OF ONE HUNDRED FEET.
 -A VARIANCE WILL BE REQUESTED FROM SECTION IV.A(4) FOR WALL SIGNS NOT EXCEEDING AN AREA OF ONE (1) SQUARE FOOT FOR EACH LINEAL FOOT OF THAT WALL FOR EXTERNALLY ILLUMINATED SIGNS
 -A VARIANCE WILL BE REQUESTED FOR 7.45 SF INTERNALLY ILLUMINATED PYLON SIGN, WHERE 50 SF IS PERMITTED BY CODE

[illegible]

THIS DRAWING IS INTENDED FOR MUNICIPAL AND/OR AGENCY
REVIEW AND APPROVAL. IT IS NOT INTENDED AS A CONSTRUCTION
DOCUMENT UNLESS INDICATED OTHERWISE.

PROJECT No.: W221017
DRAWN BY: RV
CHECKED BY: B—
DATE: 10/27/2022
CAD I.D.: W221017-SPPD-1C

PROJECT:

FOR

**TORRINGTON
PROPERTIES INC.**

PROPOSED DEVELOPMENT

MAP: #10 LOT: #93
15 PLEASANT VALLEY ROAD,
TOWN OF SUTTON ,
WORCESTER COUNTY,
MASSACHUSETTS

352 TURNPIKE ROAD
SOUTHBOROUGH, MA 01772
Phone: (508) 480-9900

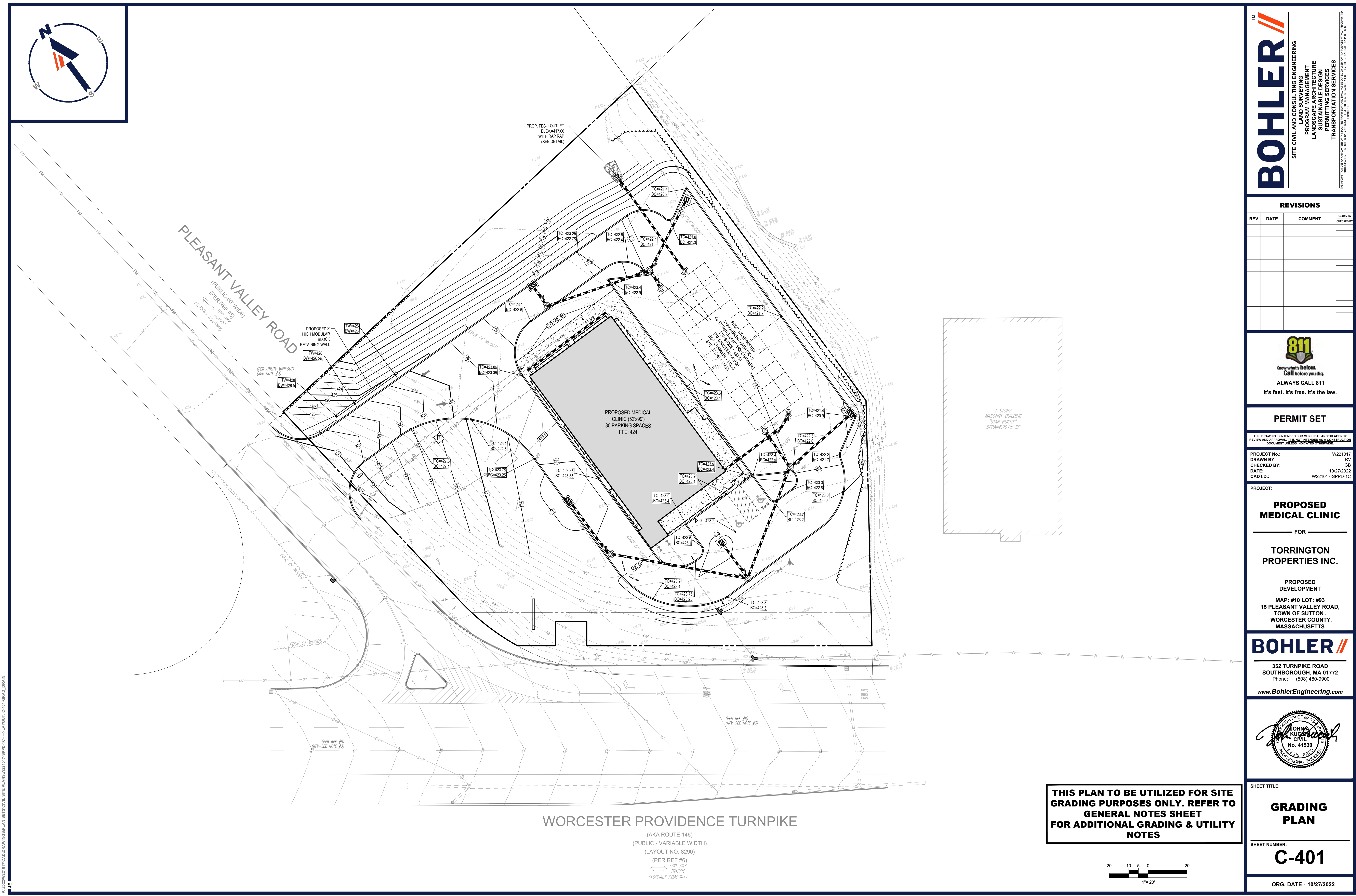
www.BohlerEngineering.com



SHEET NUMBER

C-301

ORG. DATE - 10/27/2022



P:\0222\W22107\CAD\DRAWINGS\PLAN SETS\CIVIL SITE PLANS\W22107-SPD-1C---LAYOUT: C-401 GRAD, DRAIN

BOHLER

SITE CIVIL AND CONSULTING ENGINEERING

PROGRAM MANAGEMENT

LANDSCAPE ARCHITECTURE

SUSTAINABLE DESIGN

PERMITTING SERVICES

TRANSPORTATION SERVICES

REVISIONS				
REV	DATE	COMMENT	DRAWN BY / CHECKED BY	

811

Know what's below.
Call before you dig.
ALWAYS CALL 811
It's fast. It's free. It's the law.

PERMIT SET

THIS DRAWING IS INTENDED FOR MUNICIPAL AND/OR AGENCY REVIEW AND APPROVAL. IT IS NOT INTENDED AS A CONSTRUCTION DOCUMENT UNLESS INDICATED OTHERWISE.

PROJECT No.: W221017

DRAWN BY: RV

CHECKED BY: GB

DATE: 10/27/2022

CAD ID: W221017-SPD-1C

PROPOSED MEDICAL CLINIC

FOR

TORRINGTON PROPERTIES INC.

PROPOSED DEVELOPMENT

MAP: #10 LOT: #93
15 PLEASANT VALLEY ROAD,
TOWN OF SUTTON,
WORCESTER COUNTY,
MASSACHUSETTS

BOHLER

352 TURNPIKE ROAD
SOUTHBOROUGH, MA 01772
Phone: (508) 480-9900
www.BohlerEngineering.com

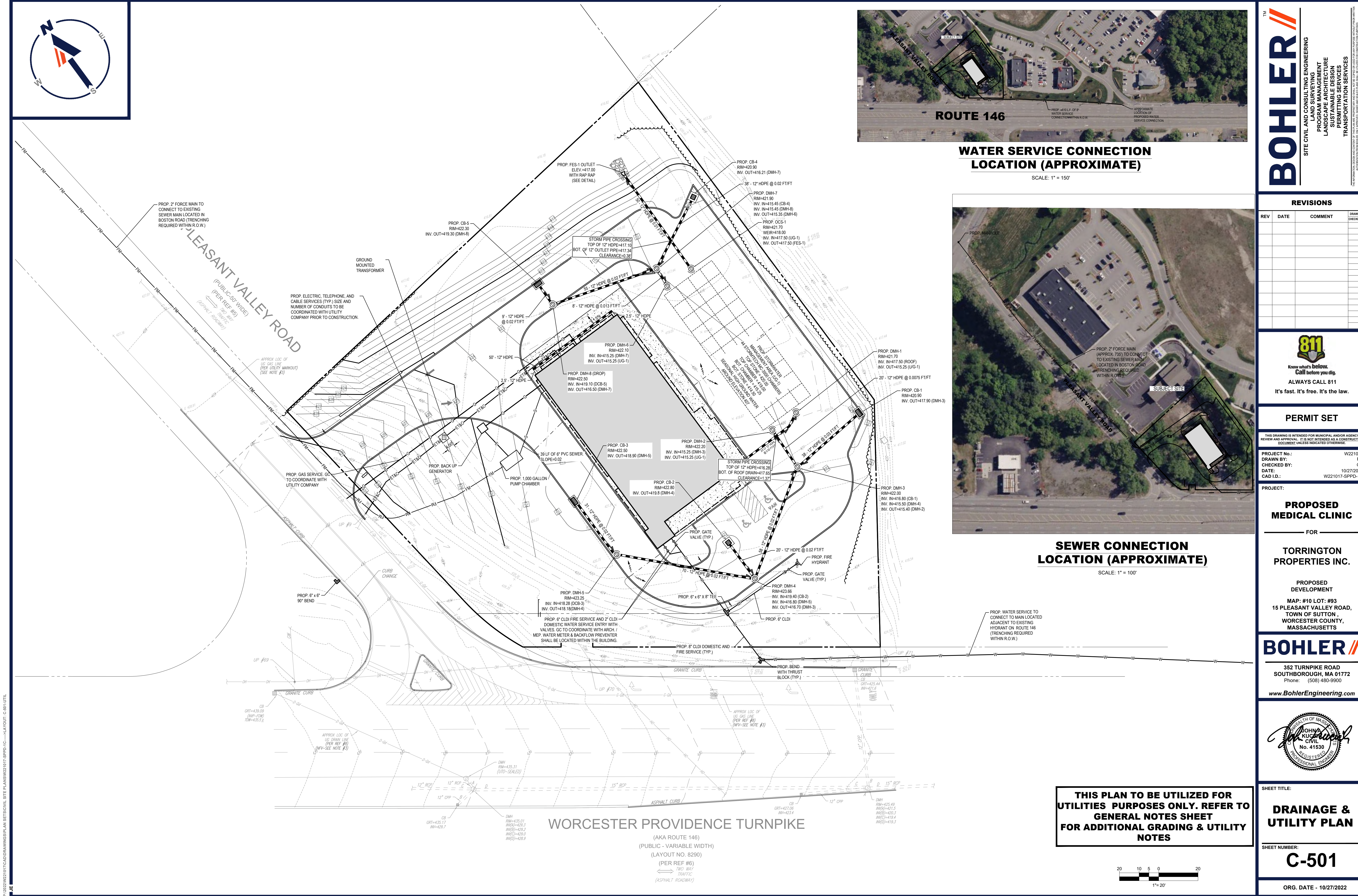
Professional Engineer Seal for John A. Bohler, No. 41530, State of Massachusetts.

THIS PLAN TO BE UTILIZED FOR SITE GRADING PURPOSES ONLY. REFER TO GENERAL NOTES SHEET FOR ADDITIONAL GRADING & UTILITY NOTES

SHEET TITLE: GRADING PLAN

SHEET NUMBER: C-401

ORG. DATE - 10/27/2022



WATER SERVICE CONNECTION
LOCATION (APPROXIMATE)

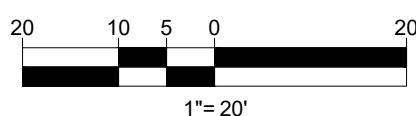
SCALE: 1" = 150'



SEWER CONNECTION
LOCATION (APPROXIMATE)

SCALE: 1" = 100'

THIS PLAN TO BE UTILIZED FOR
UTILITIES PURPOSES ONLY. REFER TO
GENERAL NOTES SHEET
FOR ADDITIONAL GRADING & UTILITY
NOTES



BOHLER

SITE CIVIL AND CONSULTING ENGINEERING
PROGRAM MANAGEMENT
LANDSCAPE ARCHITECTURE
SUSTAINABLE DESIGN
PERMITTING SERVICES
TRANSPORTATION SERVICES

REVISIONS				
REV	DATE	COMMENT	DRAWN BY	

811

Know what's below.
Call before you dig.
ALWAYS CALL 811
It's fast. It's free. It's the law.

PERMIT SET

THIS DRAWING IS INTENDED FOR MUNICIPAL AND/OR AGENCY REVIEW AND APPROVAL. IT IS NOT INTENDED AS A CONSTRUCTION DOCUMENT UNLESS INDICATED OTHERWISE.

PROJECT No.: W221017
DRAWN BY: RV
CHECKED BY: GB
DATE: 10/27/2022
CAD LD: W221017-SPD-1C

PROPOSED
MEDICAL CLINIC

FOR

TORRINGTON
PROPERTIES INC.

PROPOSED
DEVELOPMENT

MAP: #10 LOT: #93
15 PLEASANT VALLEY ROAD,
TOWN OF SUTTON,
WORCESTER COUNTY,
MASSACHUSETTS

BOHLER

352 TURNPIKE ROAD
SOUTHBOROUGH, MA 01772
Phone: (508) 480-9900
www.BohlerEngineering.com

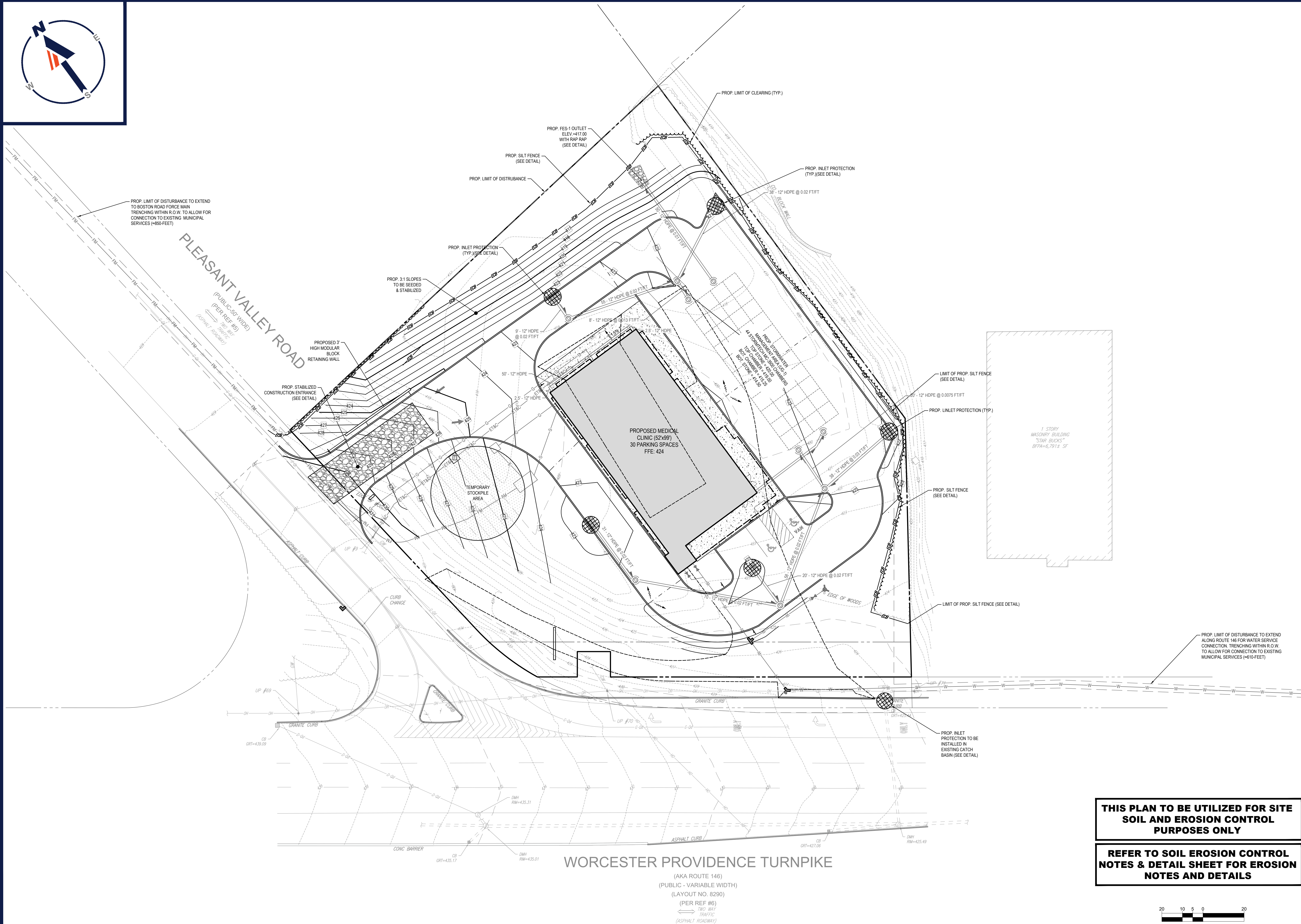
Professional Engineer Seal for John A. Bohler, No. 41530, State of Massachusetts.

SHEET TITLE:
DRAINAGE & UTILITY PLAN

SHEET NUMBER:
C-501

ORG. DATE - 10/27/2022

P:\0221017\CAD\DRAWINGS\PLAN SETS\CIVIL SITE PLANS\W221017-SPD-1C-LAYOUT C-501-1.DWG



BOHLER

SITE CIVIL AND CONSULTING ENGINEERING

PROGRAM MANAGEMENT

LANDSCAPE ARCHITECTURE

SUSTAINABLE DESIGN

PERMITTING SERVICES

TRANSPORTATION SERVICES

TM

BOHLER

REVISIONS				
REV	DATE	COMMENT	DRAWN BY / CHECKED BY	

811

Know what's below.
Call before you dig.
ALWAYS CALL 811
It's fast. It's free. It's the law.

PERMIT SET

THIS DRAWING IS INTENDED FOR MUNICIPAL AND/OR AGENCY REVIEW AND APPROVAL. IT IS NOT INTENDED AS A CONSTRUCTION DOCUMENT UNLESS INDICATED OTHERWISE.

PROJECT No.: W221017

DRAWN BY: RV

CHECKED BY: GB

DATE: 10/27/2022

CAD ID: W221017-SPPD-1C

PROJECT:

PROPOSED MEDICAL CLINIC

FOR

TORRINGTON PROPERTIES INC.

PROPOSED DEVELOPMENT

MAP: #10 LOT: #93

15 PLEASANT VALLEY ROAD,

TOWN OF SUTTON ,

WORCESTER COUNTY,

MASSACHUSETTS

BOHLER

352 TURNPIKE ROAD
SOUTHBOROUGH, MA 01772
Phone: (508) 480-9900
www.BohlerEngineering.com

SEAL OF THE COMMONWEALTH OF MASSACHUSETTS

JOHN A. BOHLER

CIVIL ENGINEER

No. 41530

REGISTERED PROFESSIONAL ENGINEER

SHEET TITLE:

SOIL EROSION & SEDIMENT CONTROL PLAN

SHEET NUMBER:

C-601

ORG. DATE - 10/27/2022

THIS PLAN TO BE UTILIZED FOR SITE SOIL AND EROSION CONTROL PURPOSES ONLY

REFER TO SOIL EROSION CONTROL NOTES & DETAIL SHEET FOR EROSION NOTES AND DETAILS



LANDSCAPE SCHEDULE						
KEY	QTY.	BOTANICAL NAME	COMMON NAME	SIZE	CONT.	
SHADE TREES						
APOG	4	ACER RUBRUM 'OCTOBER GLORY'	OCTOBER GLORY RED MAPLE	2 1/2-3' CAL.	B+B	
GTKD	3	GLEDITSIA TRIACANTHOS INERMIS 'DRAVES'	STREET KEEPER HONEYLOCUST	2 1/2-3' CAL.	B+B	
QR	4	QUERCUS RUBRA	RED OAK	2 1/2-3' CAL.	B+B	
SUBTOTAL:	13					
DECIDUOUS SHRUBS						
CSA	8	CORNUS STOLONIFERA 'ARCTIC FIRE'	COMPACT RED TWIG DOGWOOD	18-24"	B+B	
FGB	12	FOTHERGILLA GARGENI 'BLUE SHADOW'	DWARF FOTHERGILLA	18-24"	CONTAINER	
IXV	10	ILEX X VERTICILLATA 'HARVEST RED'	HARVEST RED WINTERBERRY	30-36"	CONTAINER	
PPG	10	POTENTILLA FRUTICOSA 'GOLDFINGER'	GOLDFINGER BUSH CINQUEFOIL	18-24"	CONTAINER	
RK	10	ROSA 'RADRAZZ' KNOCK OUT	KNOCK OUT ROSE	24-30"	CONTAINER	
SUBTOTAL:	50					
EVERGREEN SHRUBS						
IGS	16	ILEX GLABRA 'SHAMROCK'	SHAMROCK INKBERRY HOLLY	24-30"	B+B	
KLE	11	KALMIA LATIFOLIA 'ELF'	ELF MOUNTAIN LAUREL	18-24"	CONTAINER	
RPG	26	RHOODODENDRON 'PURPLE GEM'	PURPLE GEM RHOODODENDRON	24-30"	CONTAINER	
SUBTOTAL:	53					
GROUND COVERS						
JHBH	5	JUNPERUS HORIZONTALIS 'BAR HARBOR'	BAR HARBOR CREEPING JUNPER	15-18" SPD.	CONTAINER	
SUBTOTAL:	5					
ORNAMENTAL GRASSES						
PVS	13	PANICUM VIRGATUM 'SHENANDOAH'	SHENANDOAH SWITCH GRASS	2 GAL.	CONTAINER	
SUBTOTAL:	13					

[illegible]

THIS DRAWING IS INTENDED FOR MUNICIPAL AND/OR AGENCY
REVIEW AND APPROVAL. IT IS NOT INTENDED AS A CONSTRUCTION
DOCUMENT UNLESS INDICATED OTHERWISE.

PROJECT No.:	W221017
DRAWN BY:	RV
CHECKED BY:	GB
DATE:	10/27/2022
CAD I.D.:	W221017-LSCP-1B

PROPOSED MEDICAL CLINIC

**TORRINGTON
PROPERTIES INC.**

MAP: #10 LOT: #93
15 PLEASANT VALLEY ROAD,
TOWN OF SUTTON,
WORCESTER COUNTY,
MASSACHUSETTS

352 TURNPIKE ROAD
SOUTHBOROUGH, MA 01772
Phone: (508) 480-9900

www.BohlerEngineering.com



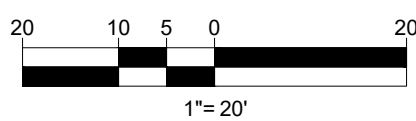
SHEET NUMBER:

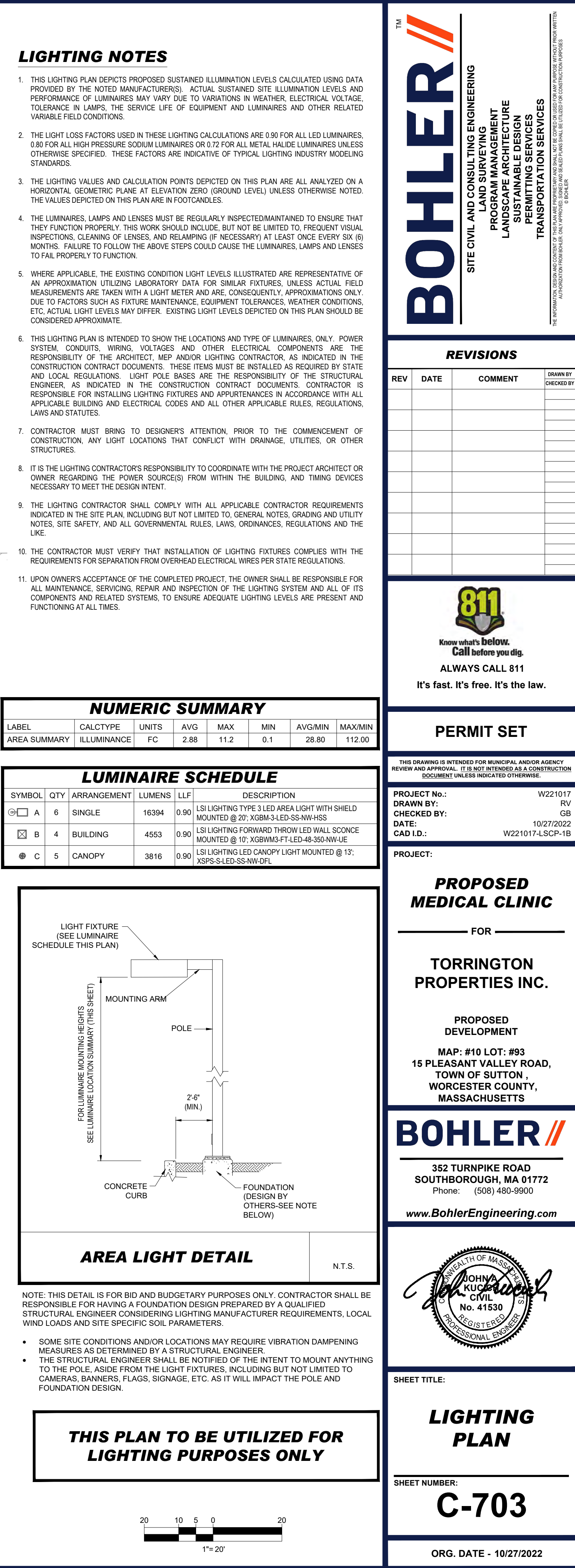
C-701

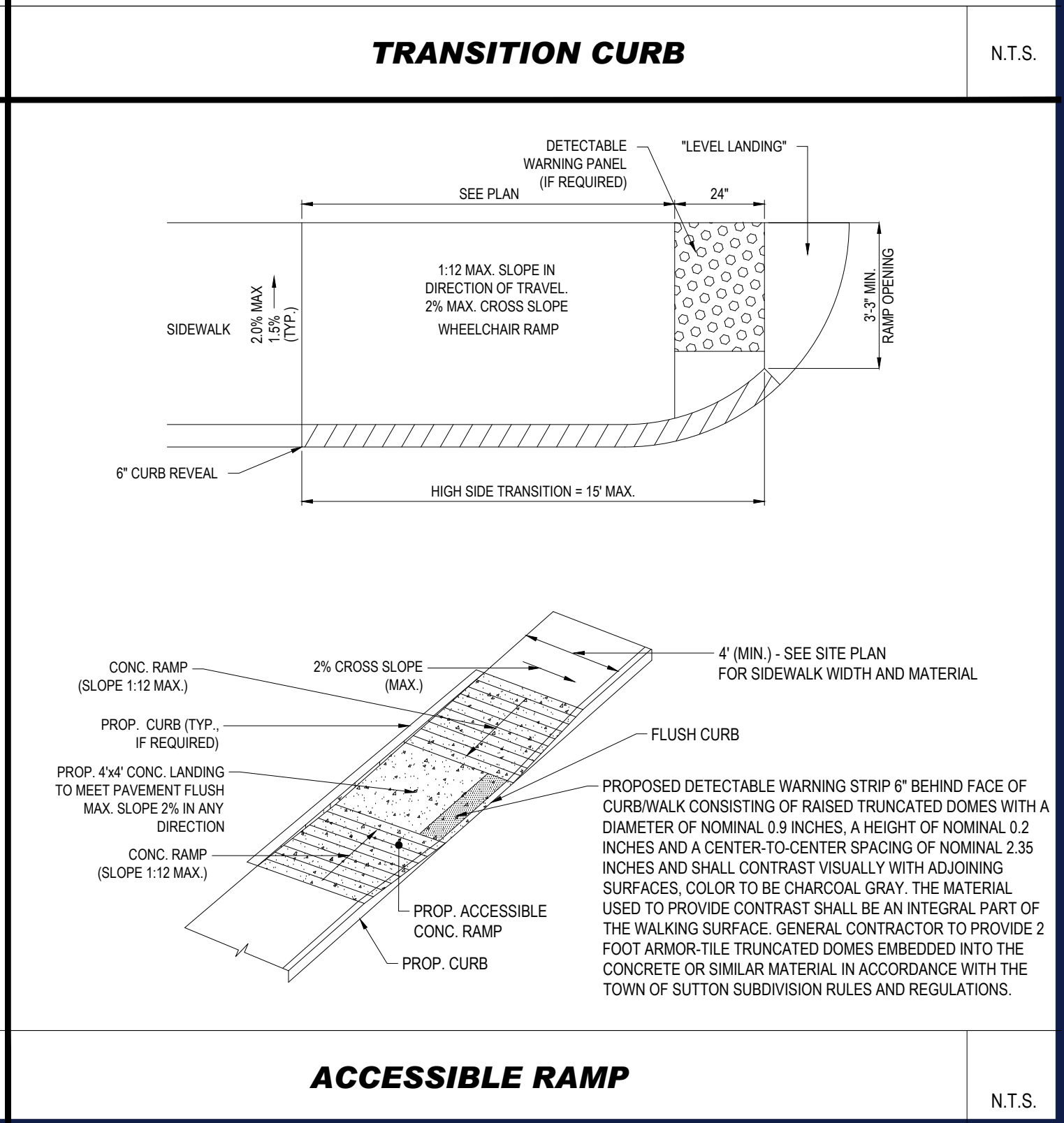
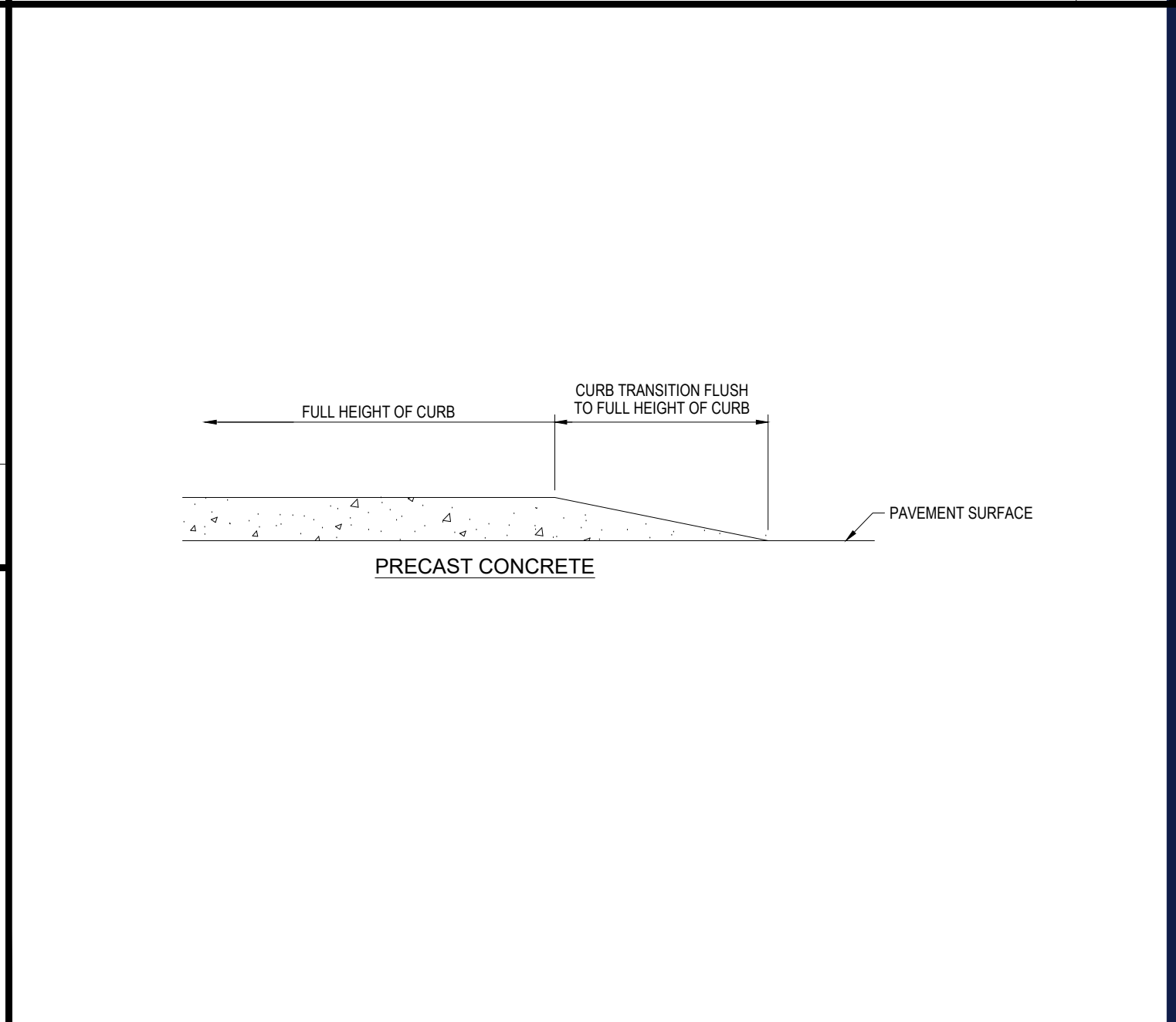
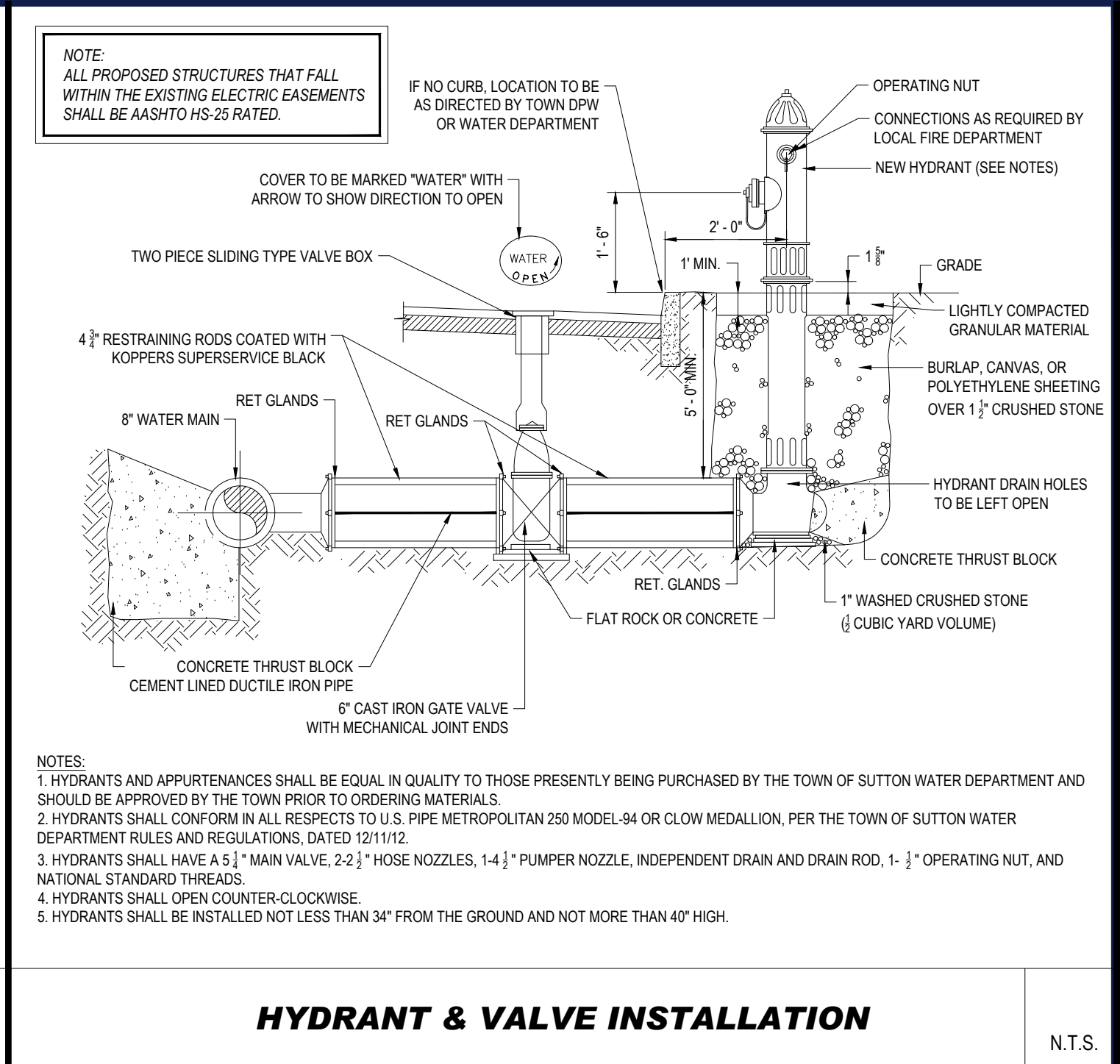
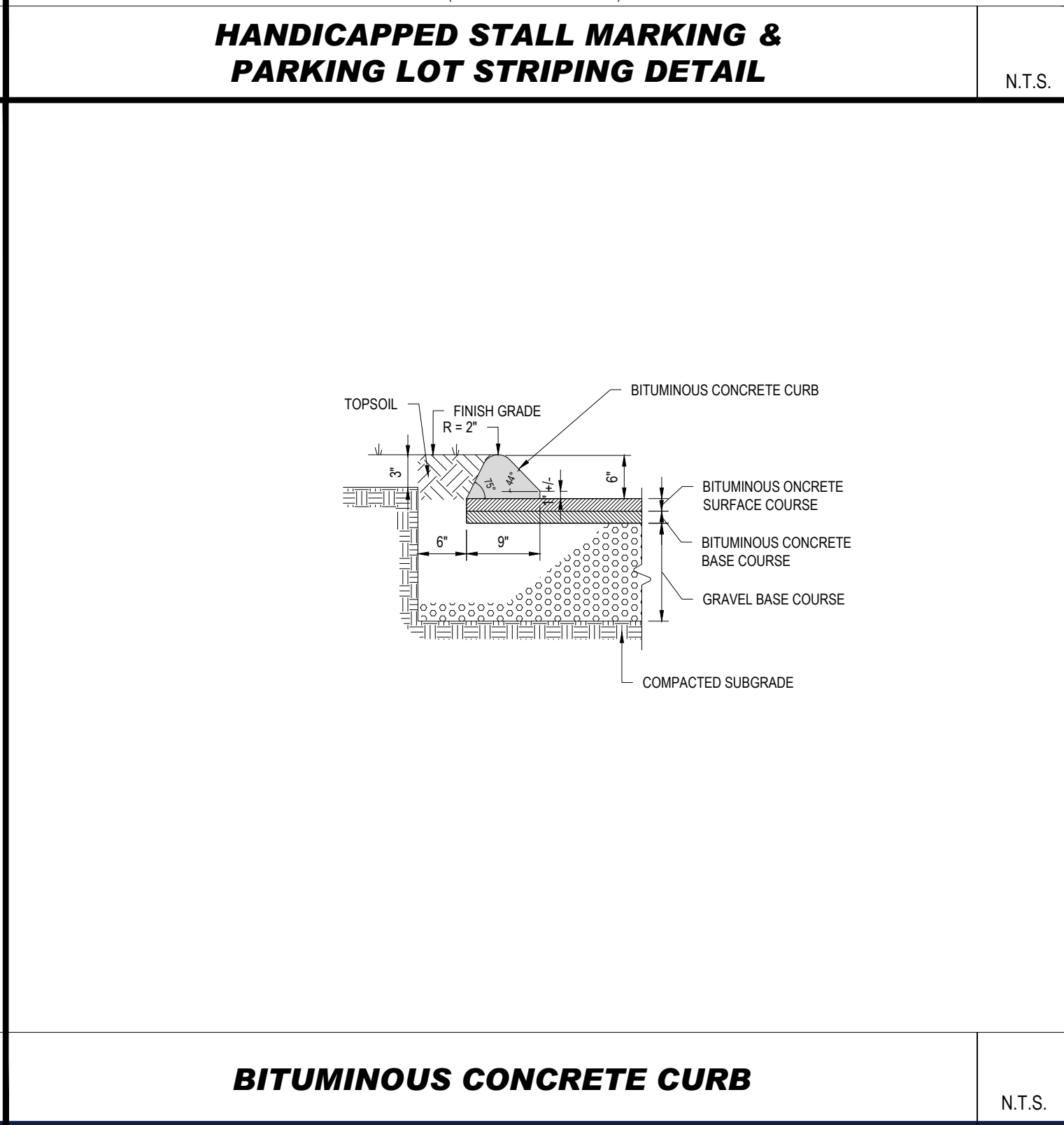
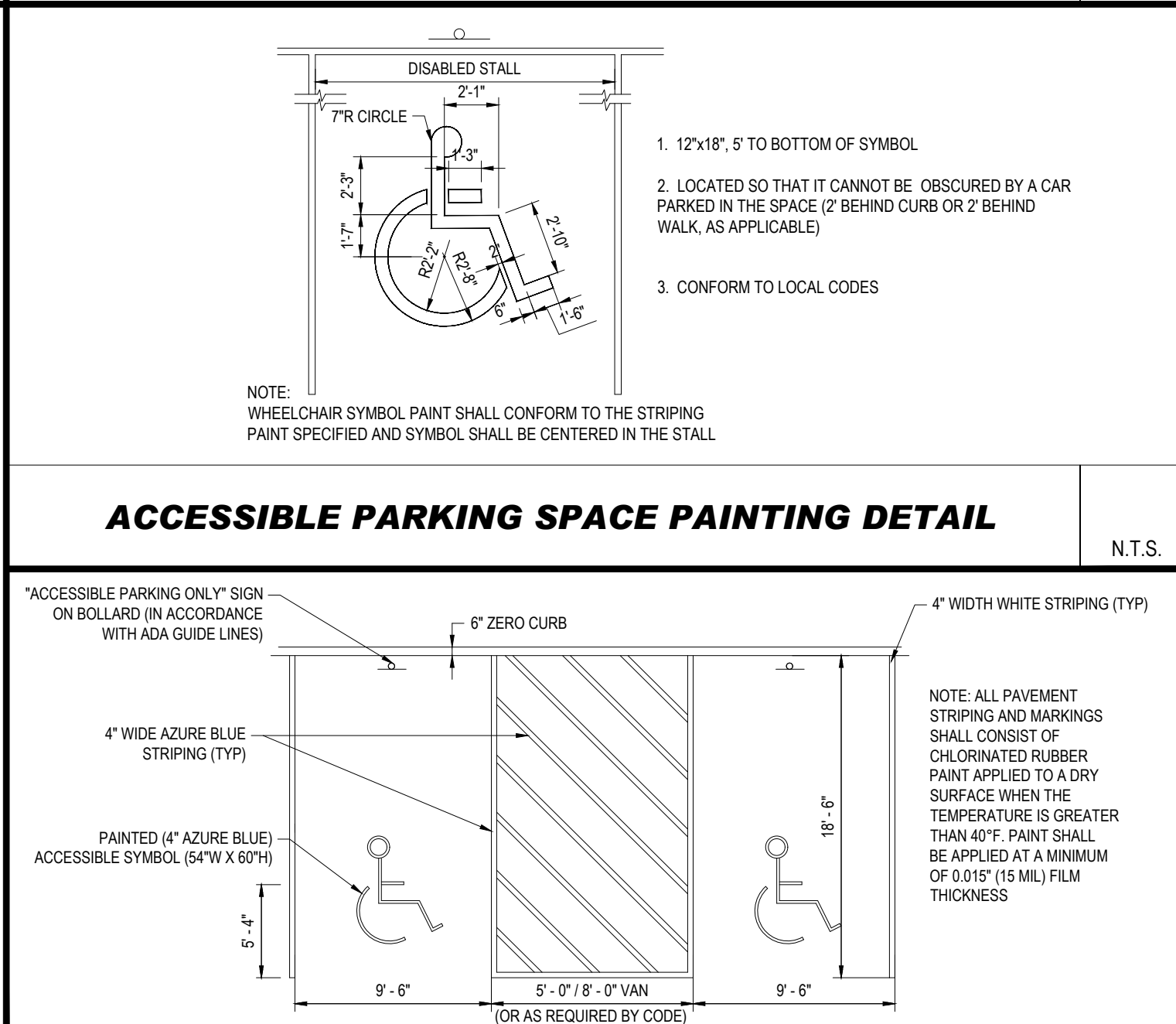
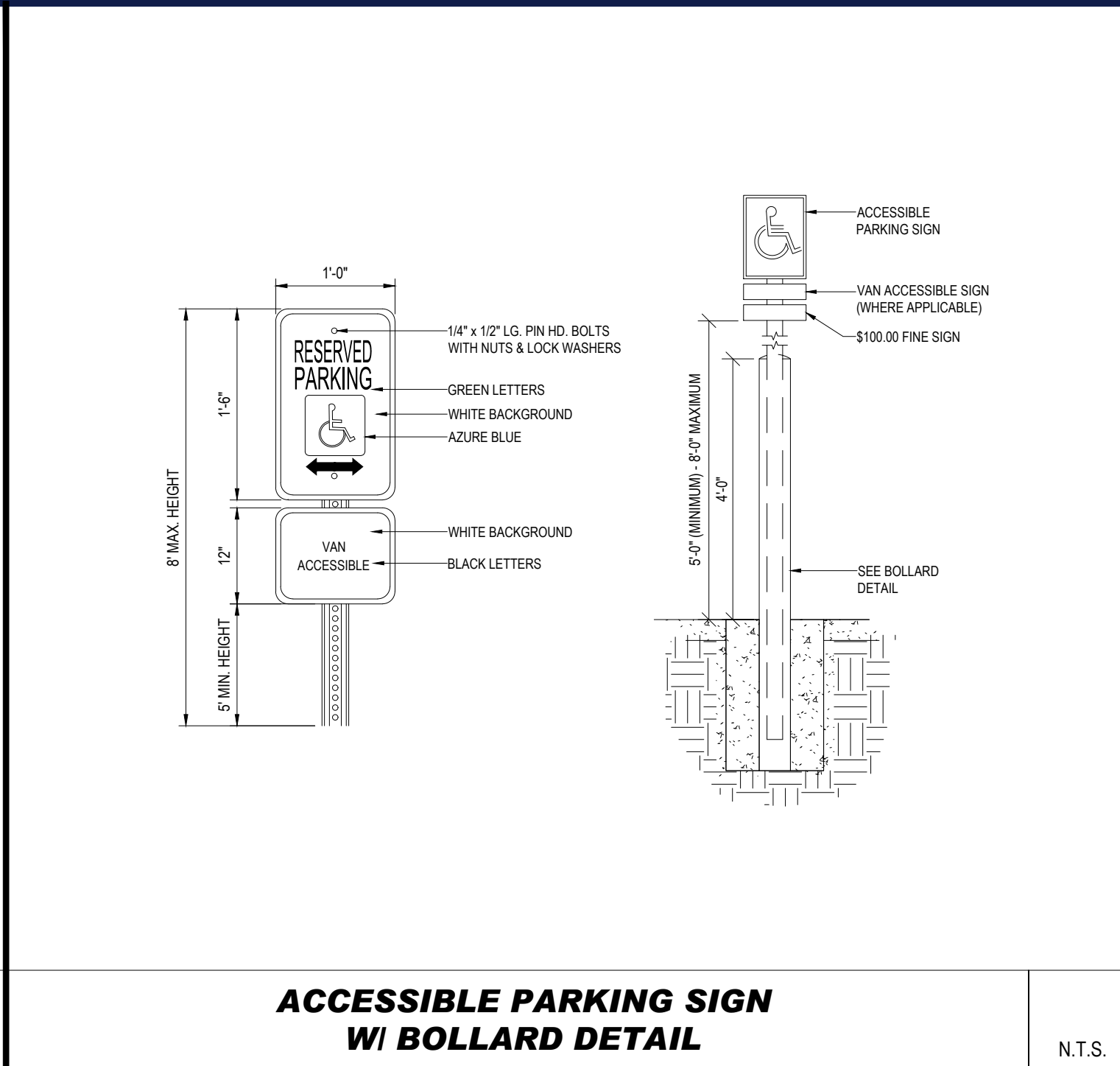
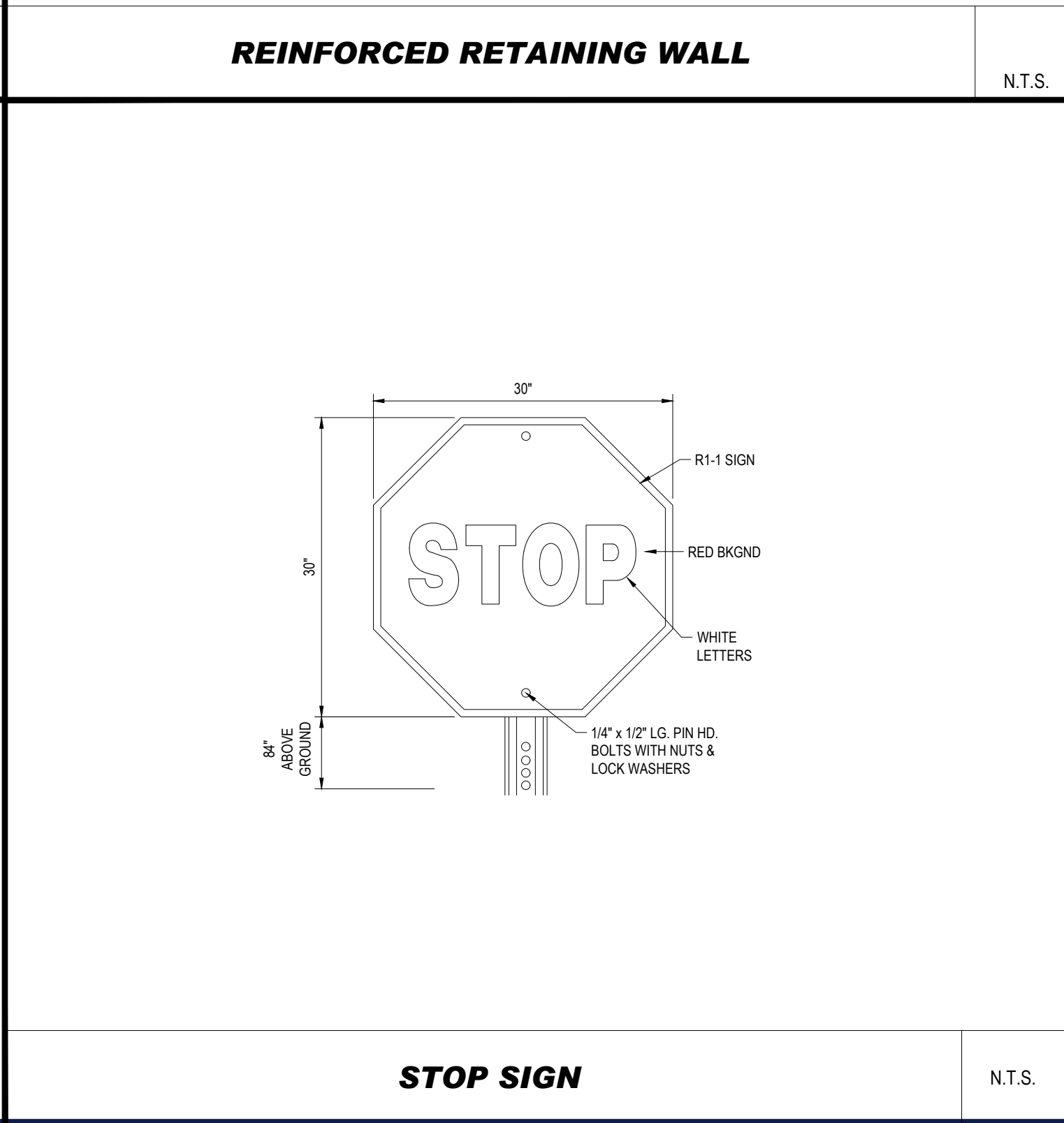
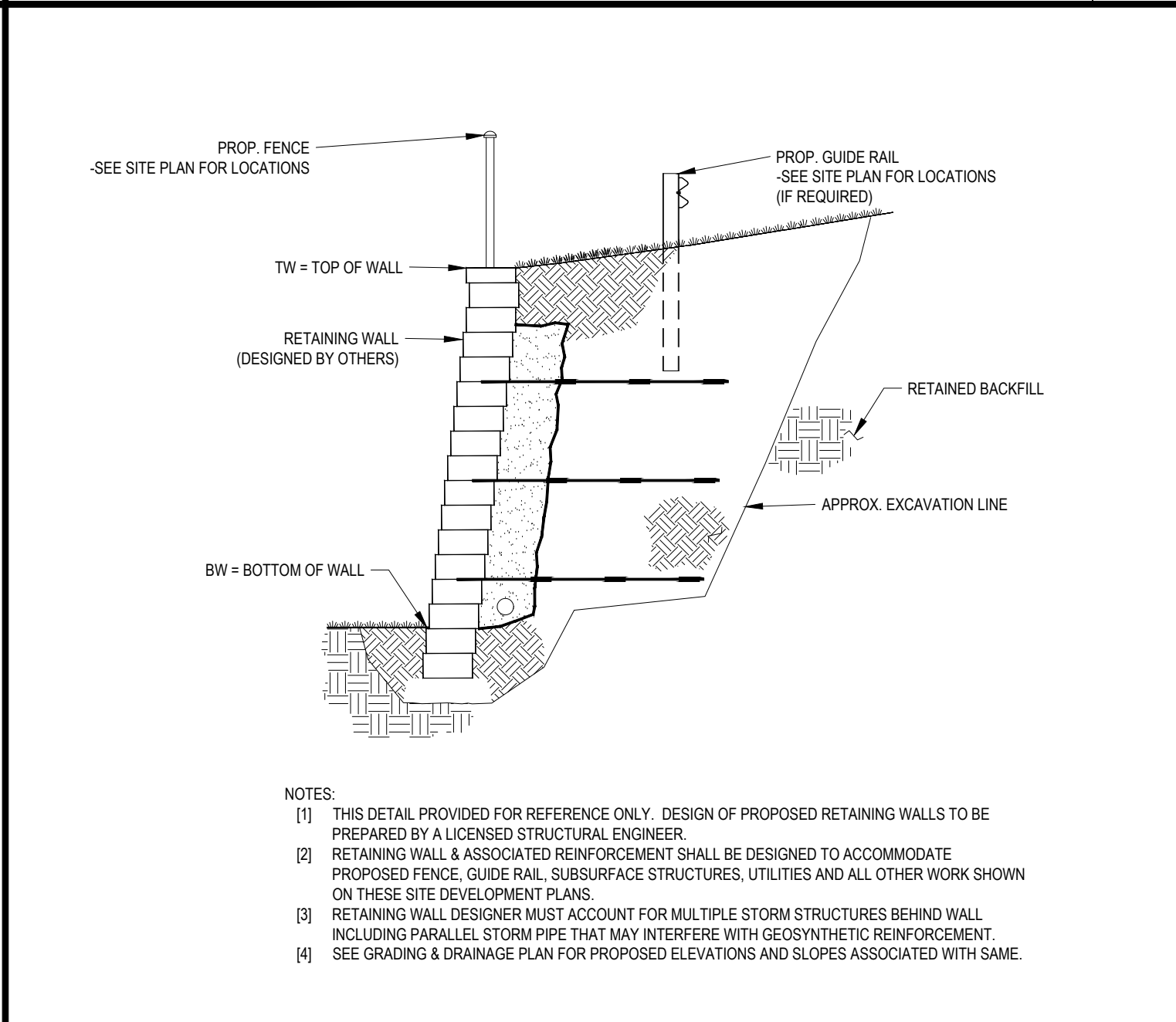
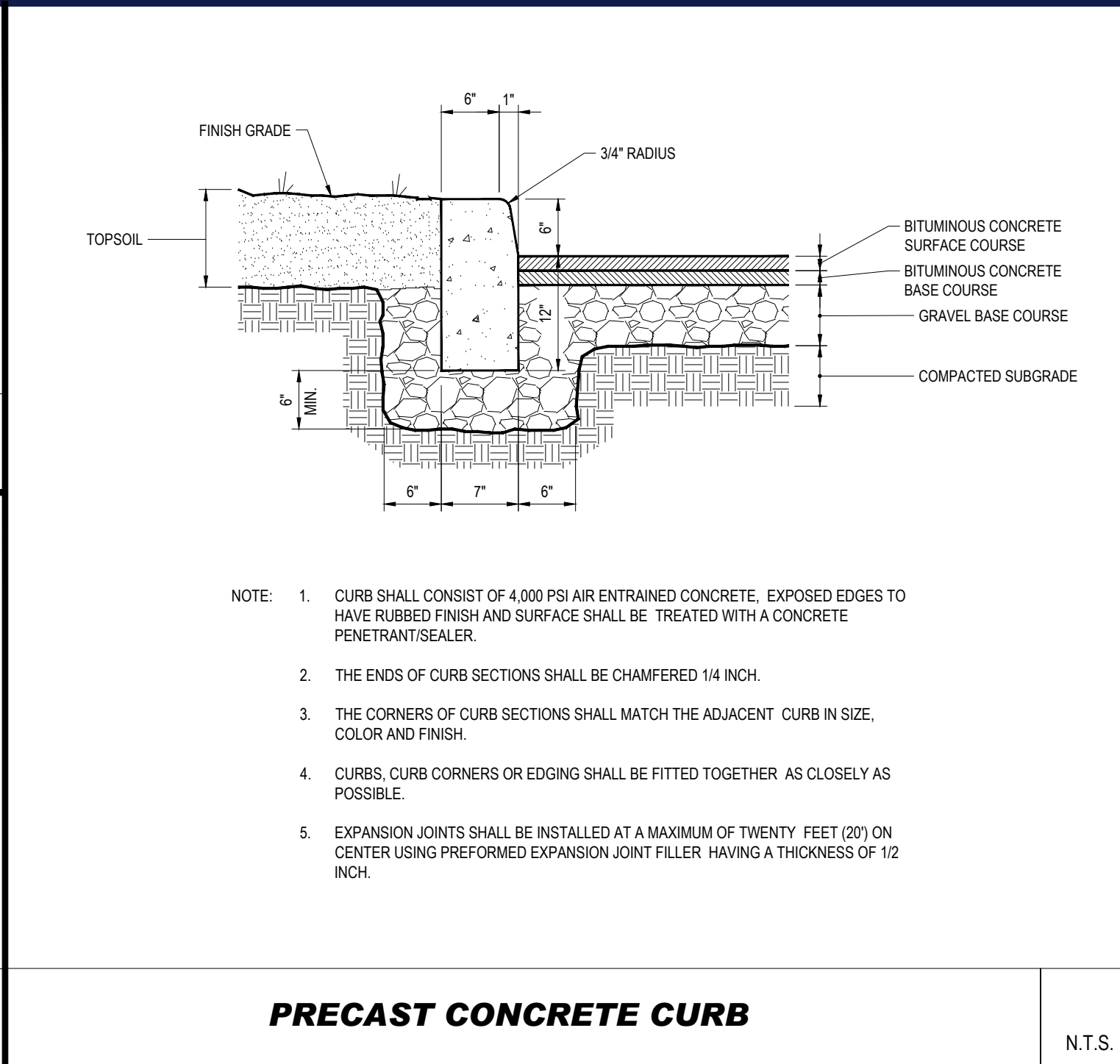
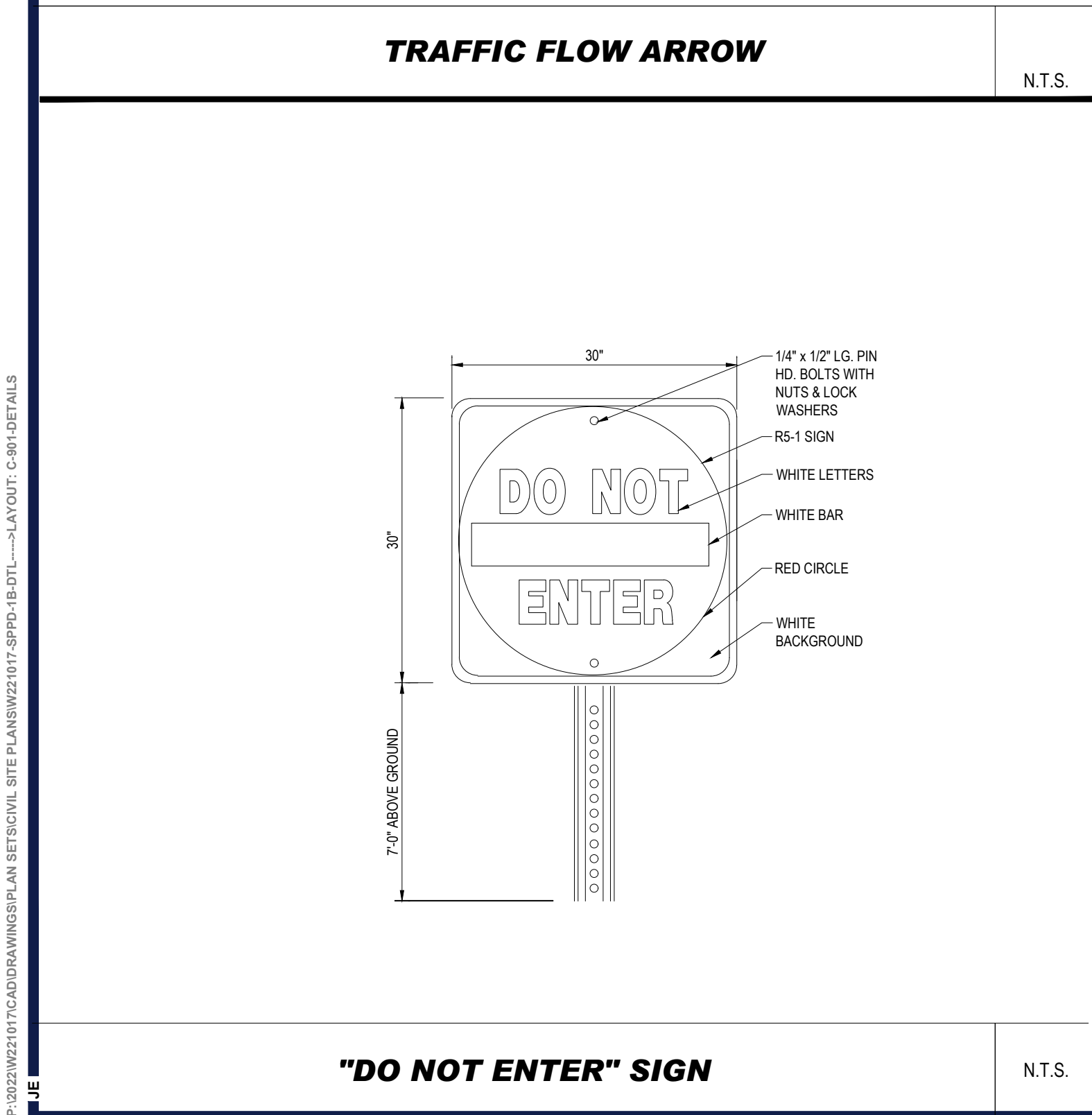
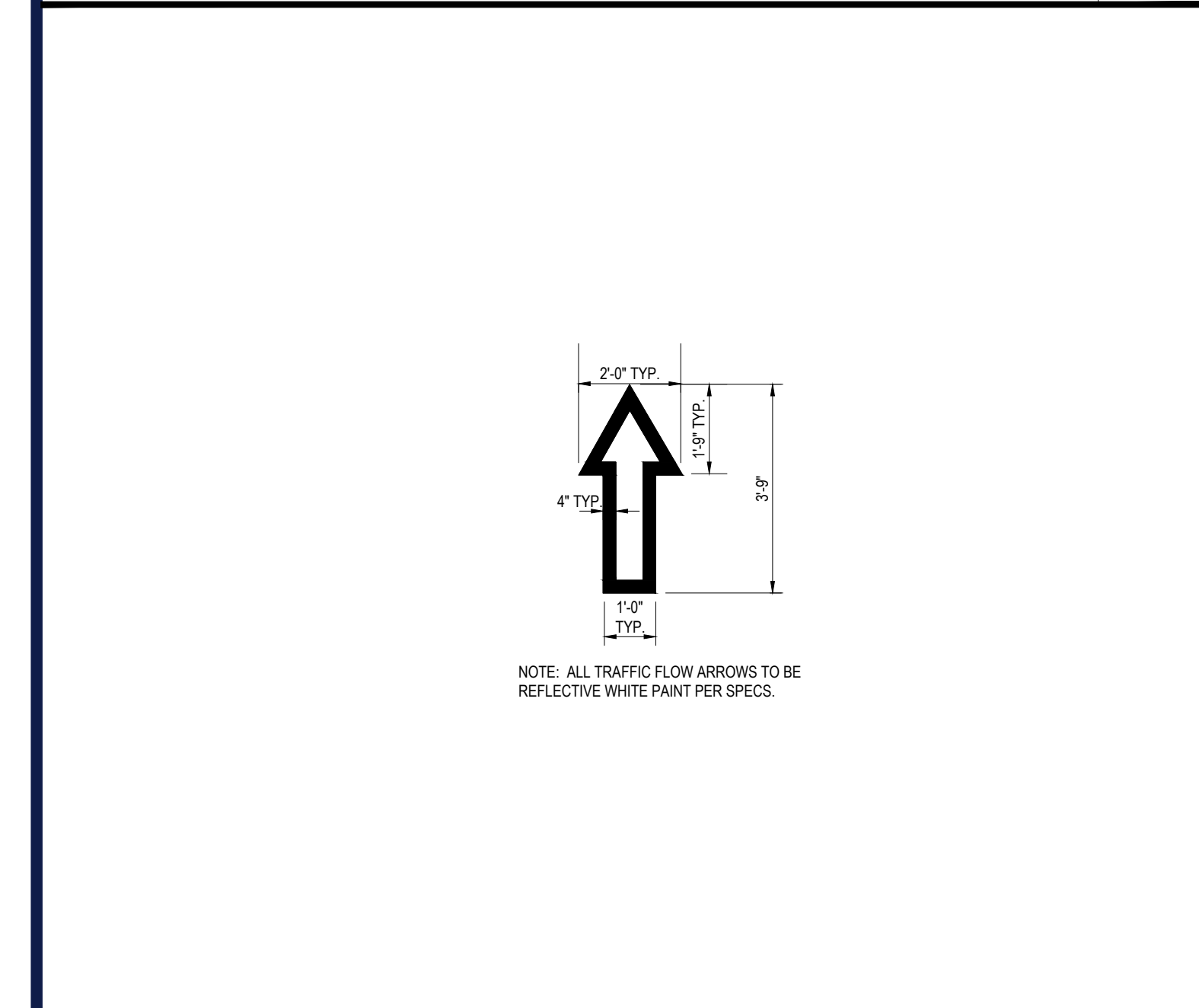
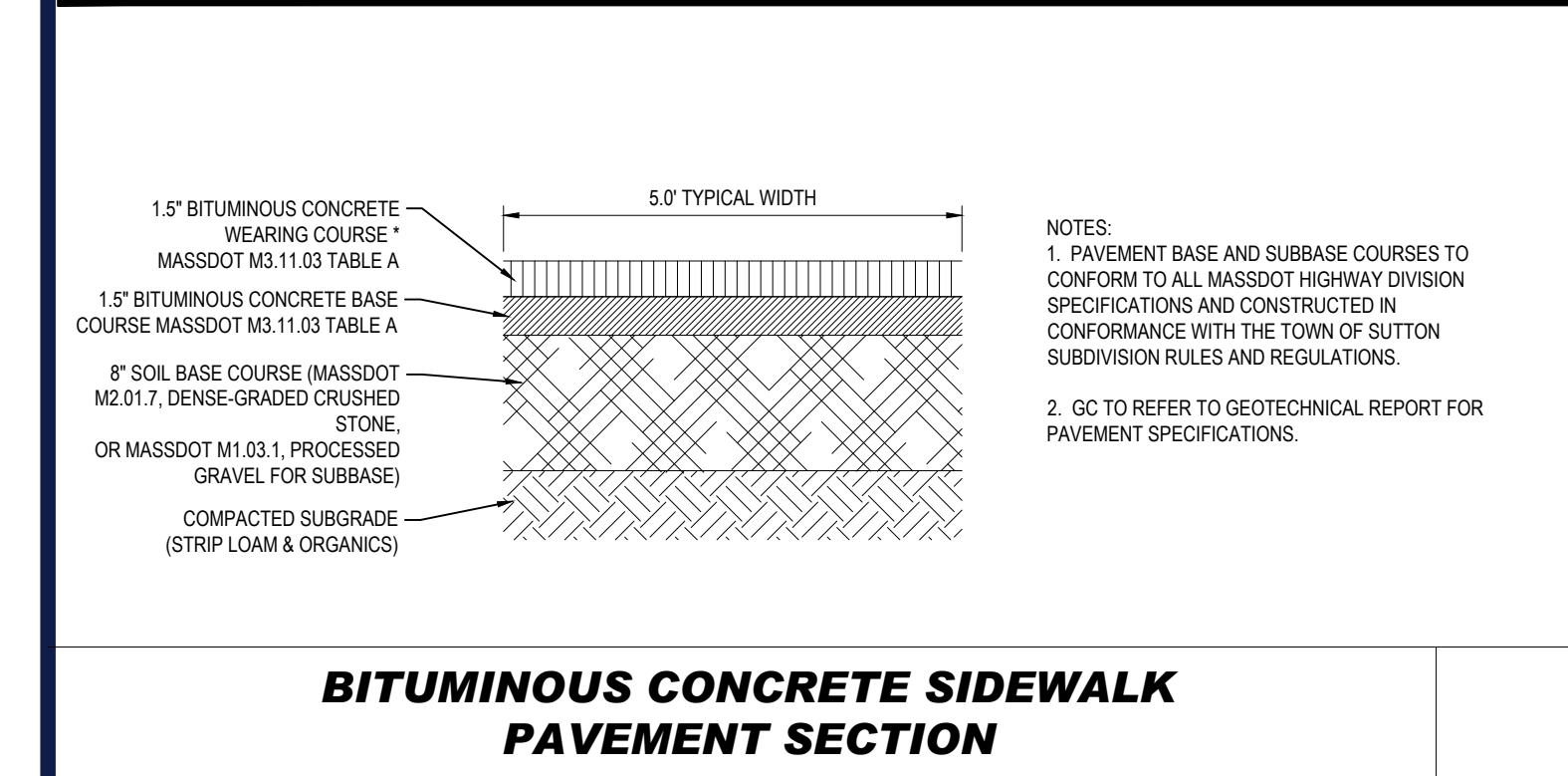
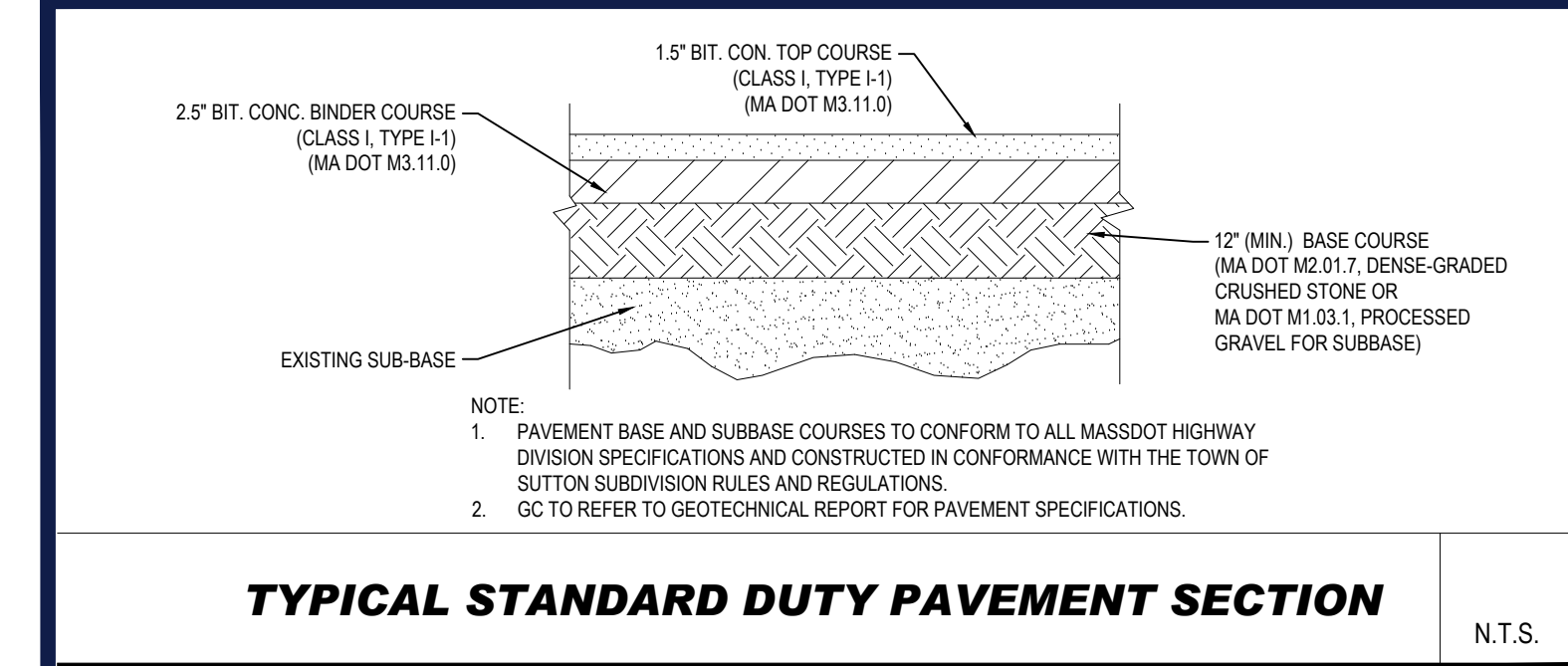
ORG. DATE - 10/27/2022

[illegible]

**REFER LANDSCAPE NOTES &
DETAILS SHEET FOR LANDSCAPE
NOTES AND DETAILS**







TM

BOHLER

SITE CIVIL AND CONSULTING ENGINEERING
PROGRAM MANAGEMENT
LANDSCAPE ARCHITECTURE
SUSTAINABLE DESIGN
PERMITTING SERVICES
TRANSPORTATION SERVICES

REVISIONS				
REV	DATE	COMMENT	DRAWN BY	

811

Know what's below.
Call before you dig.
ALWAYS CALL 811
It's fast. It's free. It's the law.

PERMIT SET

THIS DRAWING IS INTENDED FOR MUNICIPAL AND/OR AGENCY REVIEW AND APPROVAL. IT IS NOT INTENDED AS A CONSTRUCTION DOCUMENT UNLESS INDICATED OTHERWISE.

PROJECT No.: W221017
DRAWN BY: RV
CHECKED BY: GB
DATE: 10/27/2022
CAD I.D.: W221017-SPPD-1B-DTL

PROPOSED
MEDICAL CLINIC

FOR

TORRINGTON
PROPERTIES INC.

PROPOSED
DEVELOPMENT

MAP: #10 LOT: #93
15 PLEASANT VALLEY ROAD,
TOWN OF SUTTON,
WORCESTER COUNTY,
MASSACHUSETTS

BOHLER

352 TURNPIKE ROAD
SOUTHBOROUGH, MA 01772
Phone: (508) 480-9900
www.BohlerEngineering.com

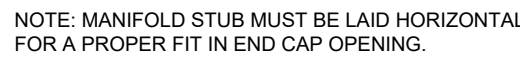
SHEET TITLE:
**DETAIL
SHEET**

SHEET NUMBER:
C-801

ORG. DATE - 10/27/2022



N.T.S.



U.T.S.

VALLEY STIFFENING RIB
CREST
WEB
LOWER JOINT CORRUGATION
FOOT
UPPER JOINT CORRUGATION
 BUILD ROW IN THIS DIRECTION →

86.0" (2184 mm) INSTALLED
90.0" (2286 mm) ACTUAL LENGTH
22.2" (564 mm) INSTALLED
25.7" (653 mm)

45.0" (1143 mm)
77.0" (1956 mm)
45.0" (1143 mm)
75.0" (1905 mm)

NOMINAL CHAMBER SPECIFICATIONS
 SIZE (W X H X INSTALLED LENGTH)
 CHAMBER STORAGE
 MINIMUM INSTALLED STORAGE*
 WEIGHT

77.0" X 45.0" X 86.0" (1956 mm X 1143 mm X 2184 mm)
 109.9 CUBIC FEET (3.11 m³)
 178.9 CUBIC FEET (5.06 m³)
 134 lbs. (60.8 kg)

NOMINAL END CAP SPECIFICATIONS
 SIZE (W X H X INSTALLED LENGTH)
 END CAP STORAGE
 MINIMUM INSTALLED STORAGE*
 WEIGHT

75.0" X 45.0" X 22.2" (1905 mm X 1143 mm X 564 mm)
 14.9 CUBIC FEET (0.42 m³)
 46.0 CUBIC FEET (1.30 m³)
 49 lbs. (22.2 kg)

*ASSUMES 12" (305 mm) STONE ABOVE, 9" (229 mm) STONE FOUNDATION AND BETWEEN CHAMBERS, 6" (152 mm) STONE PERIMETER IN FRONT OF END CAPS AND 40% STONE POROSITY

STUBS AT BOTTOM OF END CAP FOR PART NUMBERS ENDING WITH "B"
STUBS AT TOP OF END CAP FOR PART NUMBERS ENDING WITH "T"
END CAPS WITH A WELDED CROWN PLATE END WITH "C"
END CAPS WITH A PREFABRICATED WELDED STUB END WITH "W"

PART #	STUB	B	C
MC3500IEPP06T	6" (150 mm)	33.21" (844 mm)	---
MC3500IEPP08B	---	---	0.66" (17 mm)
MC3500IEPP08T	8" (200 mm)	31.16" (791 mm)	---
MC3500IEPP08B	---	---	0.81" (21 mm)
MC3500IEPP10T	10" (250 mm)	29.04" (738 mm)	---
MC3500IEPP10B	---	---	0.93" (24 mm)
MC3500IEPP10B	---	36.56" (929 mm)	---

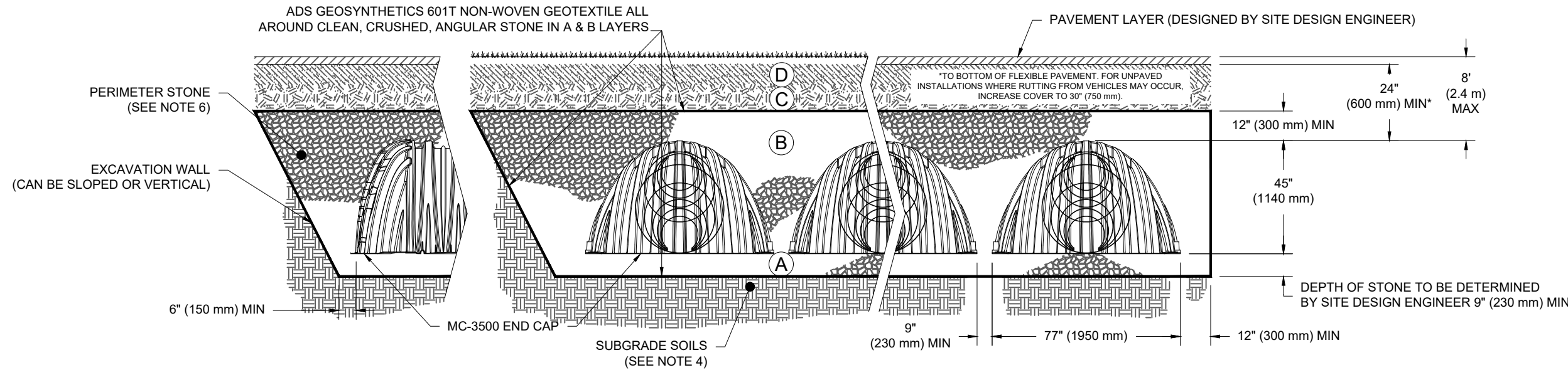
CUSTOM PRECURED INVERTS ARE AVAILABLE UPON REQUEST. INVENTORIED MANIFOLDS INCLUDE 12-24" (300-600 mm) SIZE ON SIZE AND 15-48" (375-1200 mm) ECCENTRIC MANIFOLDS. CUSTOM INVERT LOCATIONS ON THE MC-3500 END CAP CUT IN THE FIELD ARE NOT RECOMMENDED FOR PIPE SIZES GREATER THAN 10" (250 mm). THE INVERT LOCATION IN COLUMN 'B' ARE THE HIGHEST POSSIBLE FOR THE PIPE SIZE.

N.T.S.

	MATERIAL LOCATION	DESCRIPTION	AASHTO MATERIAL CLASSIFICATIONS	COMPACTION / DENSITY REQUIREMENT
D	FINAL FILL: FILL MATERIAL FOR LAYER 'D' STARTS FROM THE TOP OF THE 'C' LAYER TO THE BOTTOM OF FLEXIBLE PAVEMENT OR UNPAVED FINISHED GRADE ABOVE. NOTE THAT PAVEMENT SUBBASE MAY BE PART OF THE 'D' LAYER	ANY SOIL/ROCK MATERIALS, NATIVE SOILS, OR PER ENGINEERS' PLANS. CHECK PLANS FOR PAVEMENT SUBGRADE REQUIREMENTS.	N/A	PREPARE PER SITE DESIGN ENGINEERS' PLANS. PAVED CHECKS/LANS MAY HAVE STRINGENT MATERIAL AND PREPARATION REQUIREMENTS.
C	INITIAL FILL: FILL MATERIAL FOR LAYER 'C' STARTS FROM THE TOP OF THE EMBEDEDMENT STONE ('B' LAYER) TO 24" (600 mm) ABOVE THE TOP OF THE CHAMBER. NOTE THAT PAVEMENT SUBBASE MAY BE A PART OF THE 'C' LAYER.	GRANULAR WELL-GRADED SOILS/AGGREGATE MIXTURES, <35% FINES OR PROCESSED AGGREGATE. MOST PAVEMENT SUBBASE MATERIALS CAN BE USED IN LIEU OF THIS LAYER.	AASHTO M145) A-1, A-2, A-3 OR AASHTO M343) 3, 357, 4, 467, 5, 56, 57, 6, 67, 68, 7, 78, 6, 89, 9, 10	BEGIN COMPACTIONS AFTER 24" (600 mm) OF MATERIAL, OVER THE CHAMBERS IS REACHED. COMPACT ADDITIONAL LAYERS IN 12" (300 mm) MAX LIFTS TO A MIN. 95% PROCTOR DENSITY FOR WELL GRADED MATERIALS AND 95% RELATIVE DENSITY FOR PROCESSED AGGREGATE MATERIALS.
B	EMBEDEDMENT STONE: FILL SURROUNDING THE CHAMBERS FROM THE FOUNDATION STONE ('A' LAYER) TO THE 'C' LAYER ABOVE.	CLEAN, CRUSHED, ANGULAR STONE	AASHTO M343) 3, 4	NO COMPACTION REQUIRED.
A	FOUNDATION STONE: FILL BELOW CHAMBERS FROM THE SUBGRADE UP TO THE FOOT (BOTTOM) OF THE CHAMBER.	CLEAN, CRUSHED, ANGULAR STONE	AASHTO M343) 3, 4	PLATE COMPACTION OR ROLL TO ACHIEVE A FLAT SURFACE. ²³

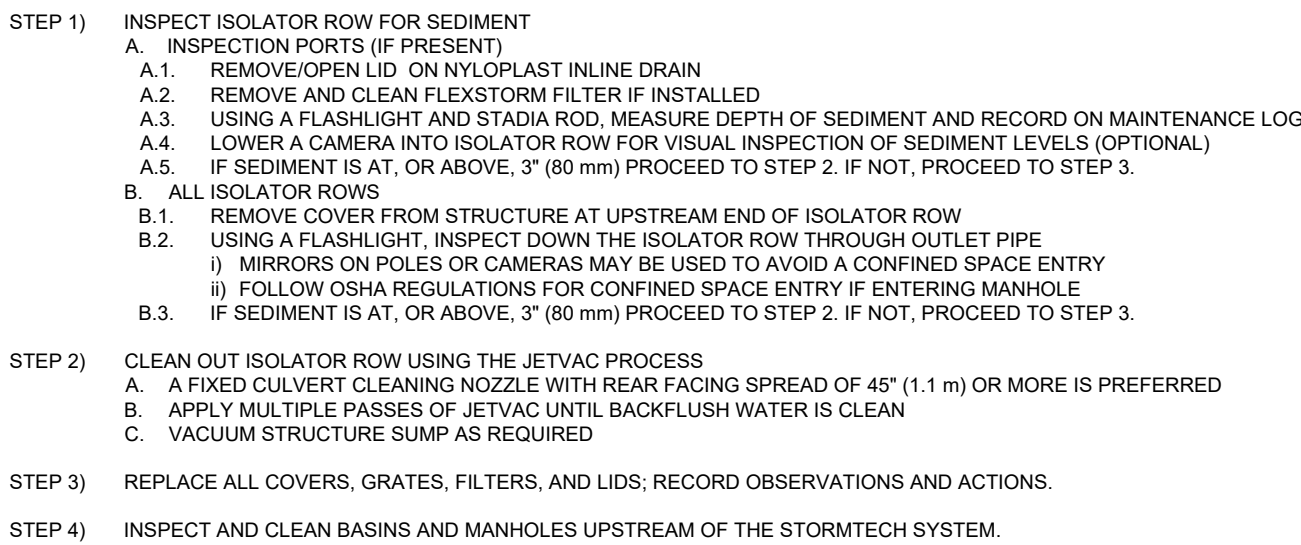
PLEASE NOTE:

1. THE LISTED AASHTO DESIGNATIONS ARE FOR GRADATIONS ONLY. THE STONE MUST ALSO BE CLEAN, CRUSHED, ANGULAR. FOR EXAMPLE, A SPECIFICATION FOR #4 STONE WOULD STATE: "CLEAN, CRUSHED, ANGULAR NO. 4 (AASHTO M43) STONE".
2. STORMTRENCH COMPACTION REQUIREMENTS ARE MET FOR 'A' LOCATION MATERIALS WHEN PLACED AND COMPACTED IN 9" (230 mm) (MAX) LIFTS USING TWO FULL COVERSAGES WITH A VIBRATORY COMPACTOR OR ROLLER. THE COMPACTION REQUIRED FOR 'B' AND 'C' LOCATIONS DEPENDS ON THE DESIGN AND CONDITIONS. A MAXIMUM MAX MAY BE ACHIEVED BY FAKING OR DRAGGING WITHOUT COMPACTION EQUIPMENT. FOR SPECIAL LOAD DESIGNS, CONTACT STORMTRENCH FOR COMPACTION REQUIREMENTS.

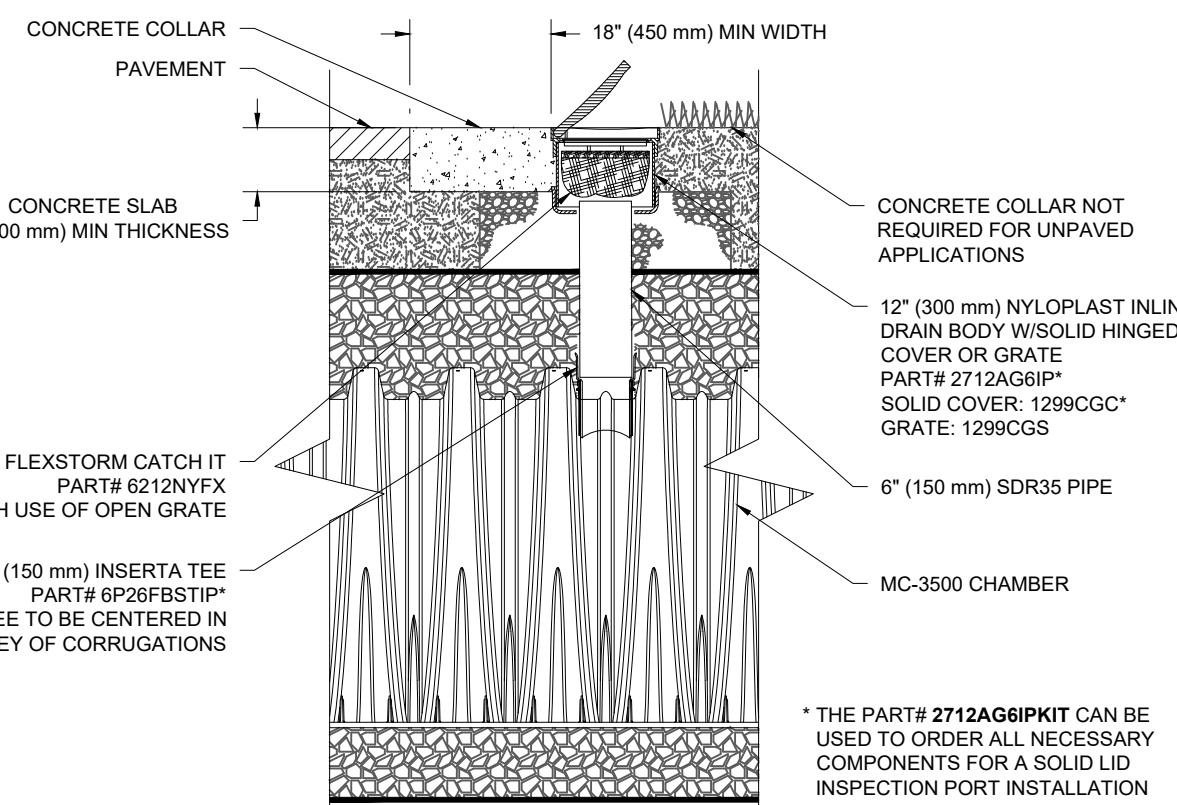


1. MC-3500 CHAMBERS SHALL CONFORM TO THE REQUIREMENTS OF ASTM F2418 "STANDARD SPECIFICATION FOR POLYPROPYLENE (PP) CORRUGATED WALL STORMWATER COLLECTION CHAMBERS".
2. MC-3500 CHAMBERS SHALL BE DESIGNED IN ACCORDANCE WITH ASTM F2787 "STANDARD PRACTICE FOR STRUCTURAL DESIGN OF THERMOPLASTIC CORRUGATED WALL STORMWATER COLLECTION CHAMBERS".
3. "ACCEPTABLE FILL MATERIALS" TABLE ABOVE PROVIDES MATERIAL LOCATIONS, DESCRIPTIONS, GRADATIONS, AND COMPACTION REQUIREMENTS FOR FOUNDATION, EMBEDMENT, AND FILL MATERIALS.
4. THE SITE DESIGN ENGINEER IS RESPONSIBLE FOR ASSESSING THE BEARING RESISTANCE (ALLOWABLE BEARING CAPACITY) OF THE SUBGRADE SOILS AND THE DEPTH OF FOUNDATION STONE WITH CONSIDERATION FOR THE RANGE OF EXPECTED SOIL MOISTURE CONDITIONS.
5. ONCE LAYER 'C' IS PLACED, ANY SOIL/MATERIAL CAN BE PLACED IN LAYER 'D' UP TO THE FINISHED GRADE. MOST PAVEMENT SUBBASE SOILS CAN BE USED TO REPLACE THE MATERIAL REQUIREMENTS OF LAYER 'C' OR 'D' AT THE SITE DESIGN ENGINEER'S DISCRETION.
6. PERIMETER STONE MUST BE EXTENDED HORIZONTALLY TO THE EXCAVATION WALL FOR BOTH VERTICAL AND SLOPED EXCAVATION WALLS.

N.T.S.



1. INSPECT EVERY 6 MONTHS DURING THE FIRST YEAR OF OPERATION. ADJUST THE INSPECTION INTERVAL BASED ON PREVIOUS OBSERVATIONS OF SEDIMENT ACCUMULATION AND HIGH WATER ELEVATIONS.
2. CONDUCT JETTING AND VACTORING ANNUALLY OR WHEN INSPECTION SHOWS THAT MAINTENANCE IS NECESSARY.



N.T.S.

10-24kW GUARDIAN SERIES

Home Standby Generators

SPECIFICATIONS (LP/NG)	10/9 kW	14/14 kW	18/17 kW	22/19.5 kW	24/21 kW
Generator Only Model	7171	7223	7226	7042	7209
Generator / 100 Amp Select Circuit Switch Model	7172	7224	-	-	-
Generator / 200 Amp Service Rated Load Shedding Smart Switch Package Model	-	7225	7228	7043	7210
Voltage (Single Phase)	120 / 240				
Amps @ 240V LPG	41.7	58.3	75.0	91.7	100
Amps @ 240V NG	37.5	58.3	70.8	81.3	87.5
Engine/Alternator RPM	3600 / 3600				
Engine	Generac G-Force				
Engine Displacement	460cc	816cc		999cc	
Fuel Consumption @ 1/2 Load - NG cu. ft/hr	101	195	169	228*	203
Fuel Consumption @ Full Load - NG cu. ft/hr	127	256	247	327*	306
Fuel Consumption @ 1/2 Load - LPG cu. ft/hr (gal/hr)	36 (0.97)	65 (1.81)	62 (1.70)	92 (2.53)*	92 (2.53)
Fuel Consumption @ Full Load - LPG cu. cu. ft/hr (gal/hr)	54 (1.48)	112 (3.07)	110 (3.02)	142 (3.90)*	142 (3.90)
Quiet-Test Mode	Yes				
db(A) at Exercise	57	55		57	57
db(A) at Normal Operating Load	61	65		67	67
Enclosure	Aluminum				
Enclosure Color	Bisque				
Warranty	5-Year Limited				
Dimensions - L" x W" x H" in. (mm)	48 x 25 x 29 (1218 x 638 x 727)				
Weight (lb)	338	385	420	466*	445
Mobile Link Wireless Connectivity	Yes				

*7042-2 & 7043-2 specifications



NATIONWIDE DEALER SERVICE NETWORK

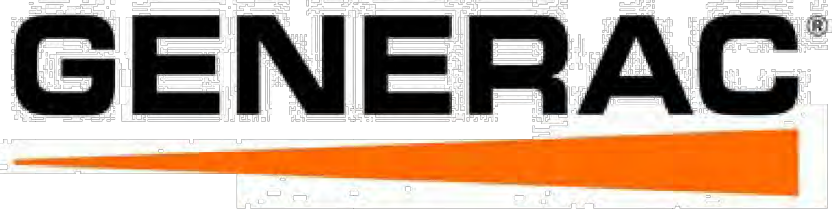
Generac's commitment to service includes scheduled maintenance programs, warranty assistance and emergency service to ensure that Generac customers are never left powerless. The largest nationwide dealer network has factory-trained technicians on staff and maintains large inventories of Generac parts, components and accessories. Find a dealer near you at Generac.com.

Generac Power Systems, Inc.
S45 W29290 Hwy. 59, Waukesha, WI 53189

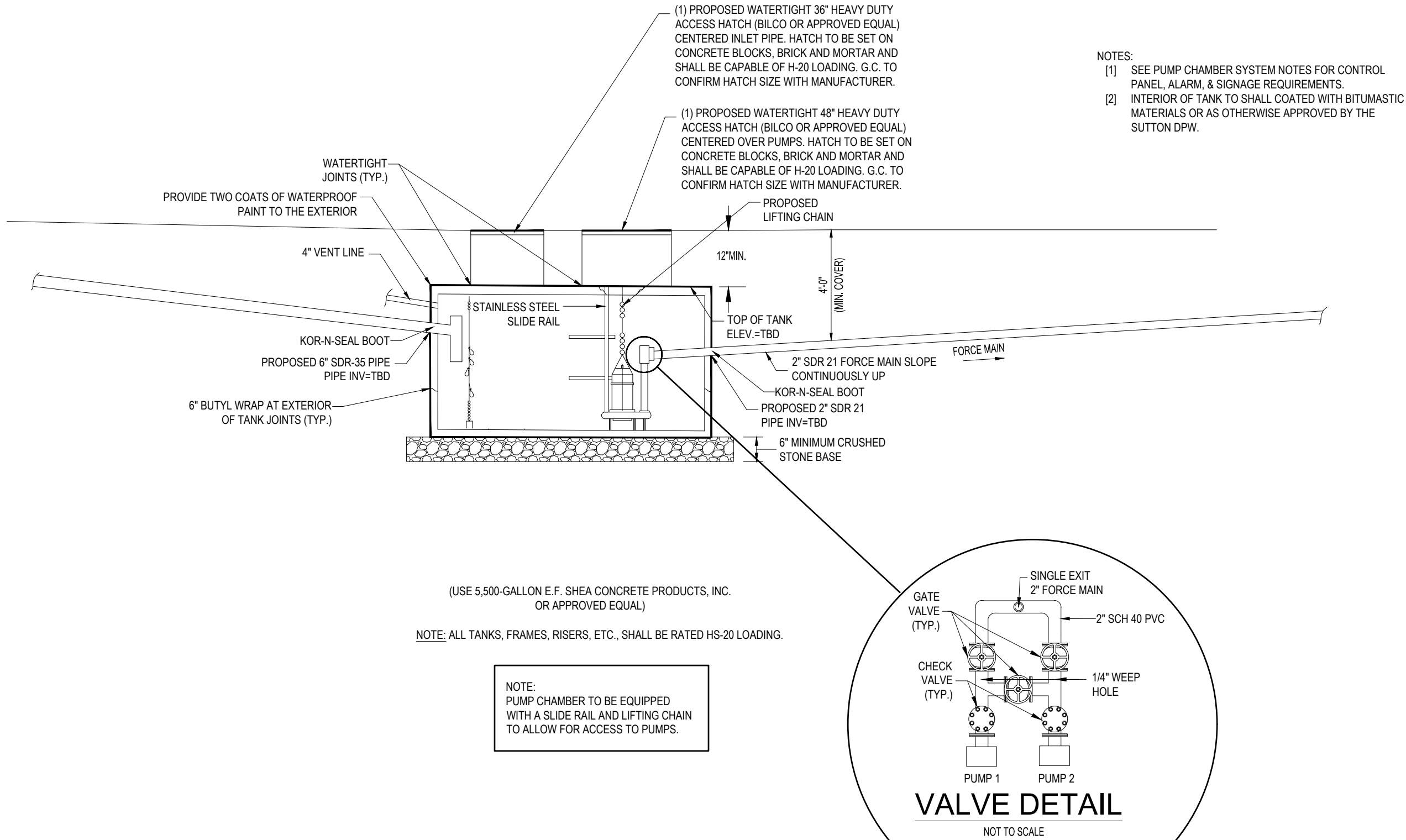
www.Generac.com | 888-GENERAC (436-3722)

201902144 REV 4/21

©2020 Generac Power Systems. All rights reserved.
Specifications are subject to change without notice.



10kW GENERAC BACK UP GENERATOR



1,000-GALLON PUMP CHAMBER

N.T.S.



SITE CIVIL AND CONSULTING ENGINEERING
CONSTRUCTION MANAGEMENT
PROGRAM MANAGEMENT
LANDSCAPE ARCHITECTURE
SUSTAINABLE DESIGN
PERMITTING SERVICES
TRANSPORTATION SERVICES

REVISIONS

REV	DATE	COMMENT	DRAWN BY



ALWAYS CALL 811
It's fast. It's free. It's the law.

PERMIT SET

THIS DRAWING IS INTENDED FOR MUNICIPAL AND/OR AGENCY REVIEW AND APPROVAL. IT IS NOT INTENDED AS A CONSTRUCTION DOCUMENT UNLESS INDICATED OTHERWISE.

PROJECT No.: W221017
DRAWN BY: RV
CHECKED BY: GB
DATE: 10/27/2022
CAD ID: W221017-SPPD-1B-DTL

PROJECT:

PROPOSED MEDICAL CLINIC

FOR

TORRINGTON PROPERTIES INC.

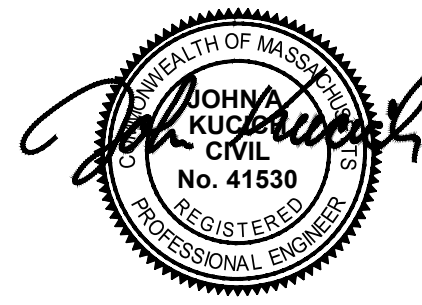
PROPOSED DEVELOPMENT

MAP: #10 LOT: #93
15 PLEASANT VALLEY ROAD,
TOWN OF SUTTON,
WORCESTER COUNTY,
MASSACHUSETTS



352 TURNPIKE ROAD
SOUTHBOROUGH, MA 01772
Phone: (508) 480-9900

www.BohlerEngineering.com



SHEET TITLE:

DETAIL SHEET

SHEET NUMBER:

C-804

ORG. DATE - 10/27/2022