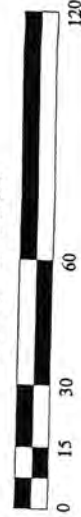


EXISTING

All to be removed

SCALE IN FEET



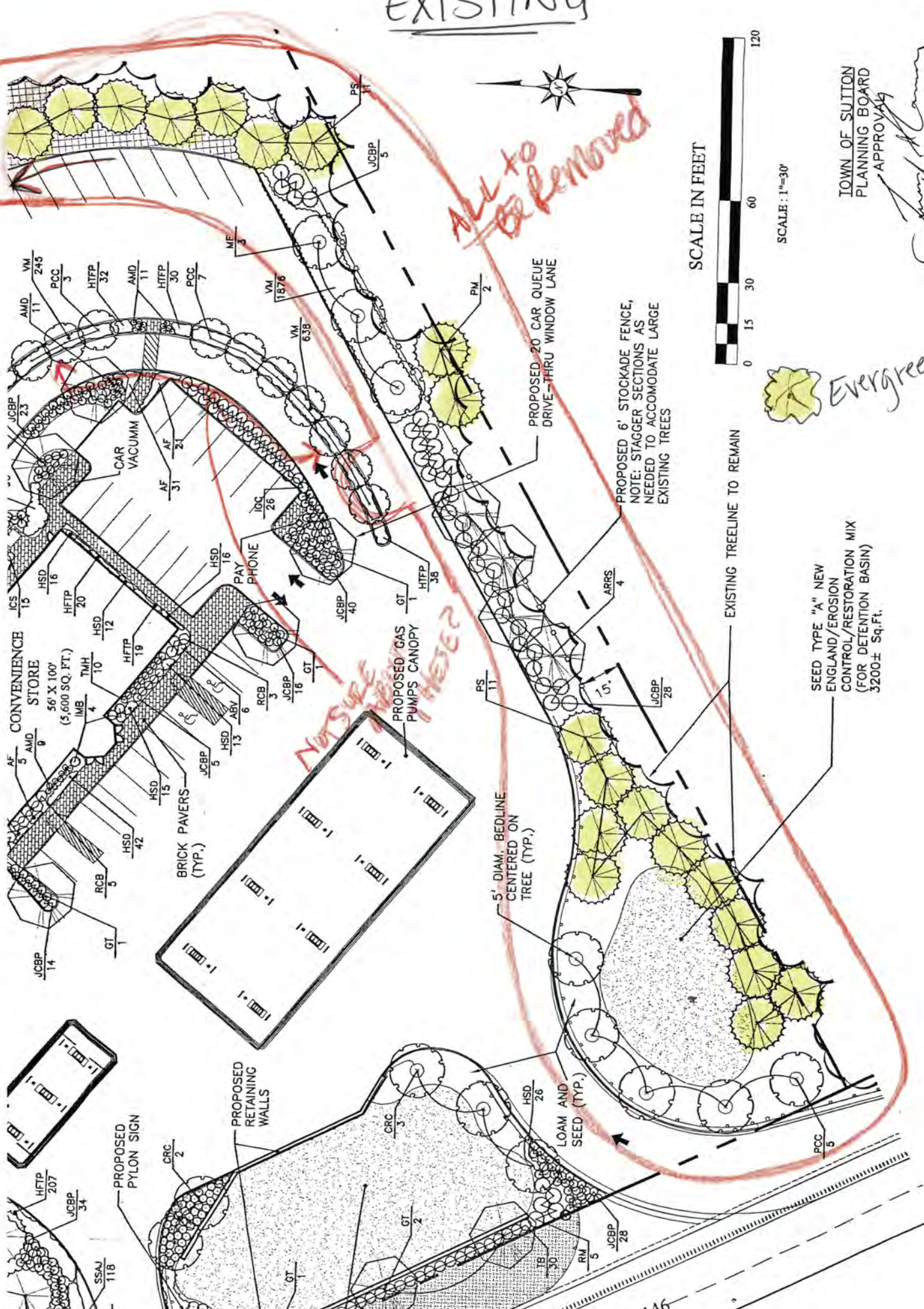
SCALE: 1"=30'

TOWN OF SUITON
PLANNING BOARD
APPROVAL

Jeff H. Lane



Evergreens





Concern: Earthen berm that fence is installed on top of is being removed along with what you can see was significant evergreen and deciduous tree plantings.

Car at elevation is at 543.

Top of berm at elevation 548-552 top of old fence approx. 554-558.

This proposal flattens site (sloping slightly up from 541 to 549 from Rt 146 moving to back of developed site) places 6' fence on flattened ground, no berm as they are now in the wetland buffer area. So top of fence will be approx. 548 - 553.

Adjacent homes approximately 300' away over elevation 537 wetland and mostly deciduous forest sit at base elevations between 550-560. So walking around their yard and house with eyes at 556-566 and on their second floor at about 566-576, will likely see and hear this site much more clearly.



