

Sutton trucking terminal sold for \$2.9M

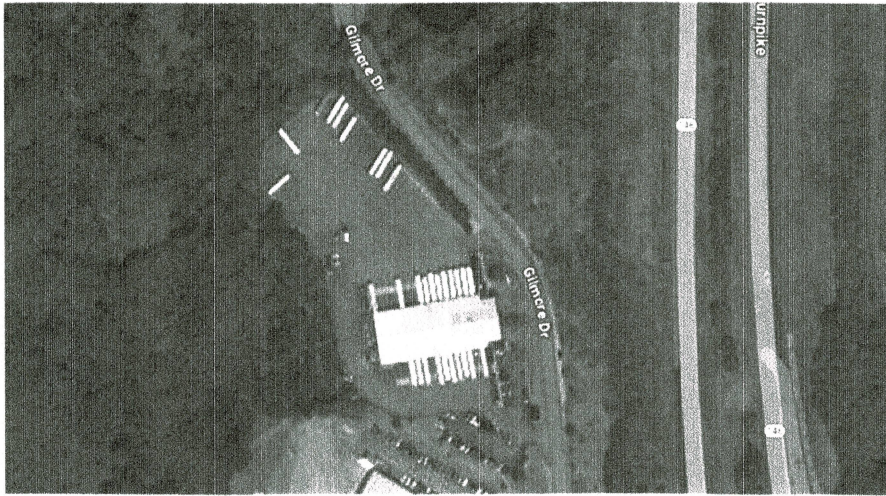


IMAGE | COURTESY OF GOOGLEMAPS

By Eric Casey

39 Gilmore Drive in Sutton

A trucking terminal in Sutton located at 39 Gilmore Drive has been sold to a Boston-based corporation.

The property was sold for \$2.9 million to 39 Gilmore TM LLC, according to a Monday press release from Worcester real estate brokerage NAI Glickman Kovago & Jacobs. 39 Gilmore TM is managed by Menachem Rubinson of Brooklyn, New York, according to filings with the Massachusetts Secretary of the Commonwealth.

The property was sold by Ross Real Estate LLC, a corporation based in Boscawen, New Hampshire. Ross bought the property in 2003 for a price of \$540,000, according to Town of Sutton property records.

The name of the trucking terminal is Ross Express.

NAI Glickman Kovago & Jacobs Principal James Glickman and vice presidents Nolan Ryan and Cody Miner represented the seller in this transaction.

"We are happy to have closed on the sale of 39 Gilmore; the location will serve to streamline supply chain operations to meet the dynamic demands of the evolving market," James Glickman said in the release. "The strategic positioning of the site positions tenants for success, serving as a gateway to major economic hubs within the region."

The trucking terminal is 16,448 square feet and contains 35 loading docks. It was constructed in 2003, according to Town records.