

Project No. 22106

November 28, 2022

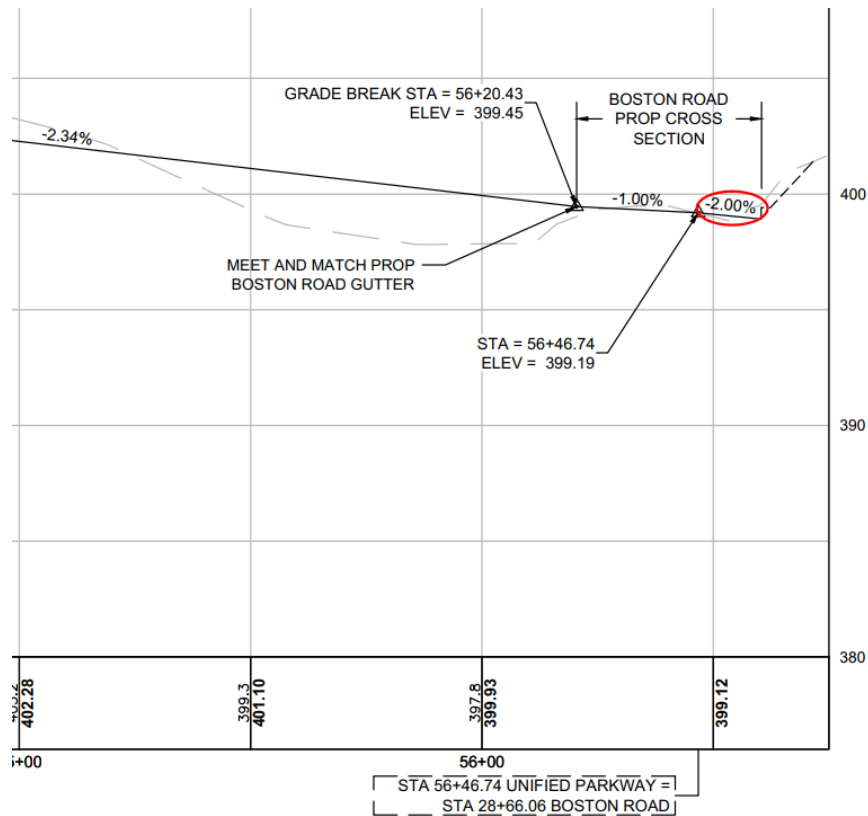
Ms. Jennifer Hager, Planning Director  
Town of Sutton  
4 Uxbridge Road  
Sutton, MA 01590

Reg.: 3<sup>rd</sup> Traffic Peer Review  
Unified Global Packaging Group  
Boston Road, Sutton, MA

Dear Jen:

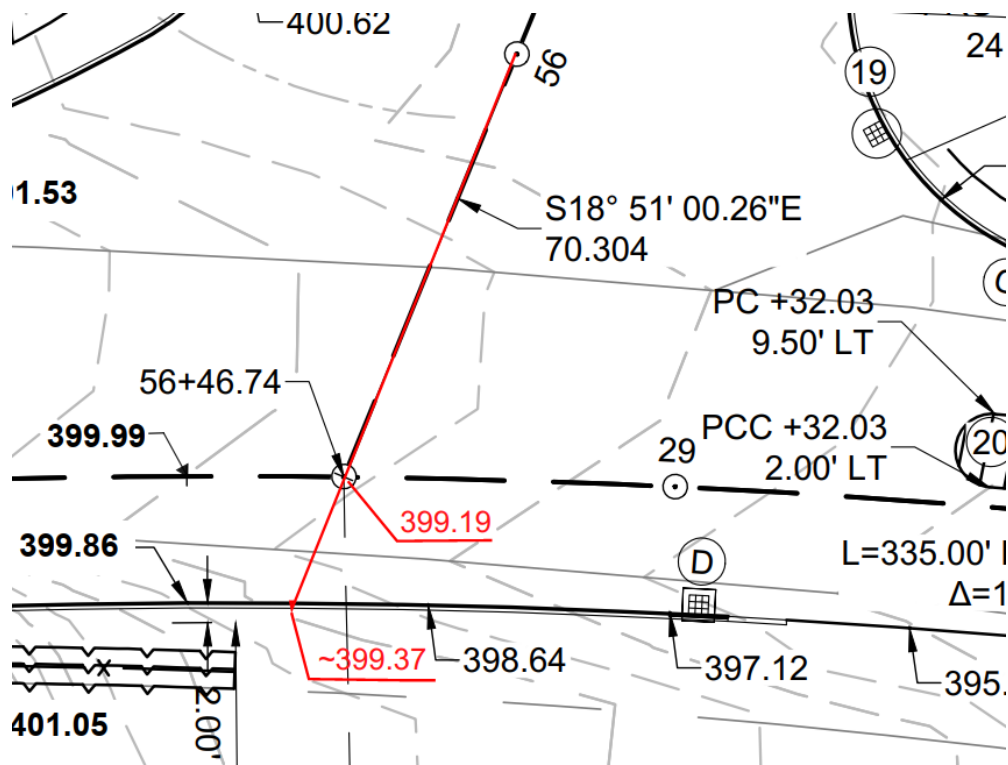
On November 23, 2022, Chappell Engineering (CEA) submitted a memorandum to Vanasse Hangen Brustlin, Inc. (VHB), titled "Peer Review Memorandum – Review of Responses dated 11.21.22 provided by David Libardoni" in which we stated that "CEA has reviewed the written responses and the updated plans and finds, with one exception, that the earlier Peer Review Comments have been satisfactorily addressed." The remaining concern centered on minor inconsistencies in the Unified Parkway and Boston Road profile grade lines (PGL) and the roadway grading in the immediate vicinity of the intersection of the two roads. VHB made several modifications to the design, revised three plan sheets (Sheets 6 of 27, 11 of 27, and 13 of 27 received via email on November 23, 2022) and re-submitted to CEA for review the same day. CEA has reviewed the revised sheets and finds the design revisions have addressed the previous concern however one issue does remain, as explained below, which should be addressed by the Designer.

Excerpted from the revised Unified Parkway profile (sheet 11 of 27):



Note the 2.00% downgrade of the Unified Parkway PGL to the right of the point of intersection with the Boston Road baseline. The graphics below are excerpted from the revised sheet 13 of 27, "CURB TIE AND GRADING PLANS". We have extended the Unified Parkway baseline (in red) from the point of intersection with the Boston Road baseline to the right edge of pavement of Boston Road in order for the horizontal and the vertical views of the Unified Parkway baseline to coincide, and we have added the approximate elevation of the right edge of pavement as calculated from the grades shown on sheet 13 of 27. The conflicting information from the two sources is apparent and should be resolved prior to issuance of Construction Plans.

Ms. Jennifer Hager  
November 28, 2022  
Page 3 of 3



We recommend that the Town of Sutton Planning Board approve the roadway design subject to the applicant making the corrections noted above.

Very truly yours,  
CHAPPELL ENGINEERING ASSOCIATES, LLC

Kirsten Braun, P.E.  
Senior Transportation Engineer